



**BOMAG**  
FAYAT GROUP

## Tandem Vibratory Rollers **BW141AD-5, BW151AD-5**



### KEY FEATURES

- Compact articulated design
- Kubota Tier 4 Final engine
- ECOMODE
- Optional ECONOMIZER
- Easy sightlines to drum edges
- Swivel seat
- Filtered water spray system
- Spring loaded drum scrapers



# BW141AD-5, BW151AD-5



## ■ *An Innovative New Design...*

### ■ Applications:

- Asphalt and base compaction
- Highway maintenance and repair
- Municipal and county road construction
- Commercial jobsite compaction
- Parking lot construction



*The optional ECONOMIZER indicates compaction results. Simple and easy, to save time, prevents unnecessary passes, and avoids over-compaction.*

*Featuring...*



*The optional cab and edge roller features will increase machine versatility for all weather conditions*

*High drum frequency provides maximum productivity and smoothness*

■ BOMAG's NEW -5 Series Heavy Tandem rollers offer several new benefits to the asphalt compaction industry

- Operators will appreciate the updated operators platform with its spacious area, easy reach controls, and safe sightlines
- Service technicians will be more efficient with daily checks and maintenance items
- QA/QC personnel and site foremen will realize consistent compaction results and uniformity on the mat
- Owners will achieve efficient utilization, uptime and return on their equipment investment



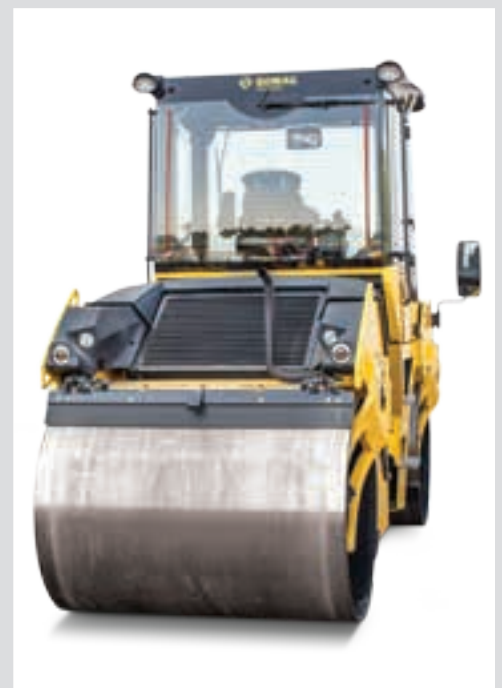
*Triple filtered water spray system with backup reserve pump and easy clean nozzles*



*Tier 4 Final Kubota diesel engine*



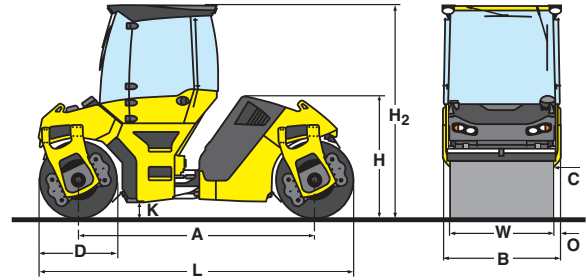
*Ergonomic travel lever control*



*Compact footprint allows easy manoeuvrability in municipal areas*

# Technical Specifications

## BW141AD-5, BW151AD-5



### Shipping dimensions

in cubic feet (m <sup>3</sup> )	without/with ROPS	
BW141AD-5	568.8 (16.1)	775.7 (22)
BW151AD-5	630.4 (17.9)	859.6 (24.4)

### Standard Equipment

- 2 amplitudes / 2 frequencies
- 4200 VPM
- Automatic vibration operation
- Individual drum vibration control
- Driver's seat, swivel
  - laterally slidable with steering wheel
- Travel lever with integrated switches
  - Vibration
  - Crab steer
  - Warning horn
- On-board Monitoring
  - Engine speed
  - Speedometer
  - Fuel consumption
  - Engine temperature
- V-belt protection
- Pressure water system with 2 pumps
- 4 integrated working lights
- Indicator and hazard lights
- ROPS / FOPS with seat belt
- Back-up alarm
- Master battery disconnect switch
- Storage compartments

### Optional Equipment

- ECONOMIZER
- Crab steer right / left 6.7" (170mm)
- ROPS cab with heat
- ROPS cab w/heat and air conditioning
- BOMAG TELEMATIC
- Asphalt mat temperature display
- Drum edge lighting
- Edge cutter
- Additional weight for BW151AD model only - 1323 lb (600kg)
- Rotary beacon
- Radio - available only with cab option

### Dimensions in inches (mm)

	A	B	C	D	H	H <sub>2</sub>	K	L	O	W
BW141AD-5	129.9 (3300)	65.5 (1664)	28.7 (730)	43.3 (1100)	86.6 (2200)	118.1 (3000)	9.8 (250)	173.2 (4400)	3.2 (82)	59.1 (1500)
BW151AD-5	129.9 (3300)	72.6 (1844)	28.7 (730)	43.3 (1100)	86.6 (2200)	118.1 (3000)	9.8 (250)	173.2 (4400)	3.2 (82)	66.1 (1680)

### Technical data

	BOMAG BW141AD-5	BOMAG BW151AD-5
<b>Weights</b>		
Operating weight with ROPS	14770 (6700) lbs (kg)	16315 (7400) lbs (kg)
Axle load (front)	7620 (3456) lbs (kg)	8372 (3798) lbs (kg)
Axle load (rear)	7150 (3243) lbs (kg)	7943 (3603) lbs (kg)
Average static linear load (front)	128.9 (23) pli (kg/cm)	126.6 (22.6) pli (kg/cm)
Average static linear load (rear)	121 (21.6) pli (kg/cm)	120.2 (21.4) pli (kg/cm)
Operating weight with CAB	15212 (6900) lbs (kg)	16755 (7600) lbs (kg)
<b>Driving Characteristics (depending on site conditions)</b>		
Max travel speed	7.5 (12) mph (kmph)	7.5 (12) mph (kmph)
Max. gradeability (without / with vibration)	40/30 %	40/30 %
<b>Drive</b>		
Engine manufacturer	Kubota	Kubota
Type	V3307 CR-T	V3307 CR-T
Tier Compliance	Tier 4 Final	Tier 4 Final
Cooling	Water	Water
Number of cylinders	4	4
Performance ISO 14396	73.2 (55.4) hp (kW)	73.2 (55.4) hp (kW)
Speed	2400 rpm	2400 rpm
Electric Equipment	12 V	12 V
Drive system	hydrostatic	hydrostatic
<b>Brakes</b>		
Service brake	hydrostatic	hydrostatic
Parking brake	SAHR	SAHR
<b>Steering</b>		
Steering system	oscillating, articulating	oscillating, articulating
Lateral displacement right/left (crab steer)	6.7 (170) in (mm)	6.7 (170) in (mm)
Track Radius, inner	176.4 (4480) in (mm)	172.8 (4390) in (mm)
<b>Vibratory system</b>		
Vibrating drum	front + rear	front + rear
Drive system	hydrostatic	hydrostatic
Frequency	3000/4200 (50/70) vpm (Hz)	3000/4200 (50/70) vpm (Hz)
Amplitude	0.028/0.010 (0.71/0.27) in (mm)	0.026/0.010 (0.67/0.25) in (mm)
Centrifugal force	18900/14175 (84/63) lbs (kN)	18900/13950 (84/62) lbs (kN)
<b>Water Spray System</b>		
Type of system	pressurized	pressurized
Back-up system	2nd pump	2nd pump
<b>Capacities</b>		
Fuel	33 (125) gal (l)	33 (125) gal (l)
Water	158.5 (600) gal (l)	158.5 (600) gal (l)

Technical modifications reserved. Machines may be shown with options.

B859H-3896 3M1214TTPG

