



**Link-Belt**  
C R A N E S

**HTC-3140**  
**HTC-3140 LB**

**140 U.S. ton | 120 metric ton Hydraulic Truck Crane**  
**140 U.S. ton | 120 metric ton Hydraulic Truck Crane**

- **HTC-3140 LB** 42.3 ft to 195.3 ft (12.9-59.5m) 6-section pin & latch boom
- **HTC-3140** 41.4 ft to 162 ft (12.6-49.3m) 5-section pin & latch boom
- No charted capacity deductions for telescoping loads
- Five boom extend modes provide superior capacities: EM1 – EM5
- Optional 10-31-55 ft (3.0-9.4-16.7m) three-piece, bi-fold, on-board lattice attachment with 2°, 15°, 30°, and 45° manual offsets, and 2° through 45° hydraulic offsets
- Optional three 18 ft (5.5m) fly extensions plus 55 ft (16.7m) provide a total attachment length of 109 ft (33.2m)
- **HTC-3140 LB** 311 ft (94.8m) maximum tip height
- **HTC-3140** 278 ft (84.7m) maximum tip height
- Modular style counterweights
- 25,955 lbs (115.5kN) maximum winch line pull
- 405 fpm (123.4m/min) maximum winch line speed
- Next generation operator's cab with improved visibility and ergonomics
- Automated manual transmission with 2-speed auxiliary transmission
- Anti-lock (ABS) brakes
- "Stow 'n Go" steel pontoons



# HTC 3140 HTC 3140<sub>LB</sub>

- 5 and 6-section pin & latch boom with attachment flexibility
- Big, wide cab with outstanding visibility
- Winches deliver impressive numbers of line pull and line speed
- Counterweight flexibility, big engine and transmission power, along with hydro-gas suspension promise incredible mobility on the road or on the job



10-31-55 ft (3.0-9.4-16.7 m)  
three-piece bi-fold lattice attachment  
with 2°, 15°, 30° and 45° manual  
offsets and 2°-45° hydraulic offsets

## Outstanding mobility on the road and on the job site

- Cruise control
- Three stage engine **compression brake**
- **Ether injection system**—optional
- **Automated transmission** (no clutch pedal) —11 speeds forward, 3 speeds reverse with 2 modes of operation: **fully automatic and semi-automatic**
- **Two-speed auxiliary transmission**
- **Job site travel** is permissible with all 60,000 lbs (27 215 kg) of counterweight for exceptional job site versatility.
- Up to 0.32 mph (0.51 km/hr) job site travel
- **Highway speeds up to 65.6 mph (105.61 km/hr)** are unmatched in the industry today.



### Comfortable carrier cab:

- Dash-mounted **comprehensive instrumentation** with back-lit gauge
- Roll up/down door window provides **excellent ventilation**
- Fully adjustable **air-ride fabric seat**
- **Suspended pedals**



### Boom dolly/trailer ready

when equipped with optional boom float kit, rear electrical and air connections.

Optional rear electrical and air connections



Auxiliary winch can be removed and installed without an assist crane using only the top and bottom tray of the counterweight stack. Counterweight removal system allows all counterweight configurations to be raised and lowered by hydraulic cylinders from the comfort of the operator's cab.

Two standard **locking storage boxes**.



# Pin & latching boom with attachment flexibility

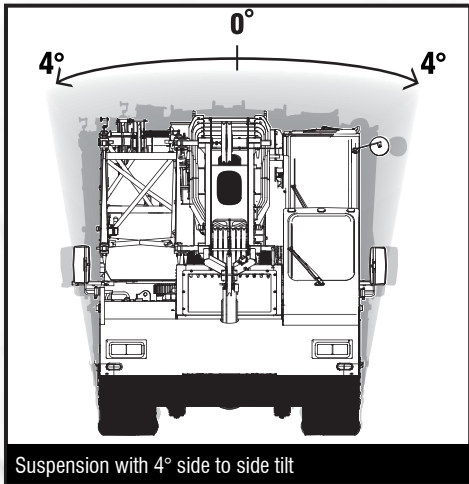
- **Quick reeve boom head** eliminates the need to remove the becket when it becomes necessary to change the reeving
- **Five extend modes** for superior capacities throughout the extension range
- Available **two or three-piece bi-fold lattice fly** which allow the tip section to be stored, thus enhancing the lifting performance when using the base section
- Boom requires **no greasing** because of ingenious Teflon wear pucks impregnated in the full contact wear pads
- Two available **offset fly options**: manual offset with 2°, 15°, 30°, and 45°, and a hydraulic offset with 2° - 45° with no capacity deduction for luffing loads
- **No deducts** for stowed attachments



**Quick reeve boom head** eliminates the need to remove the becket when reeving is changed.

Standard boom dolly connections

Mechanical boom angle indicator - standard



Large engine doors allow for easy access

Side view camera

Daytime running lights

Self-storing fifth outrigger pontoon

Overhead console for document storage with AM/FM radio

Large west coast-style rear viewing mirrors

Full air, S-cam anti-lock (ABS) brakes

Aluminum wheels and radial tires

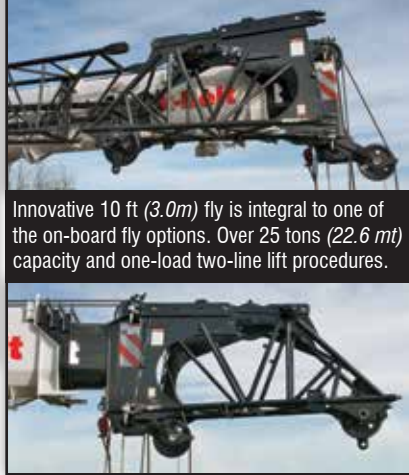
Stow 'n Go outrigger pontoons

Non-slip surface strips on carrier deck

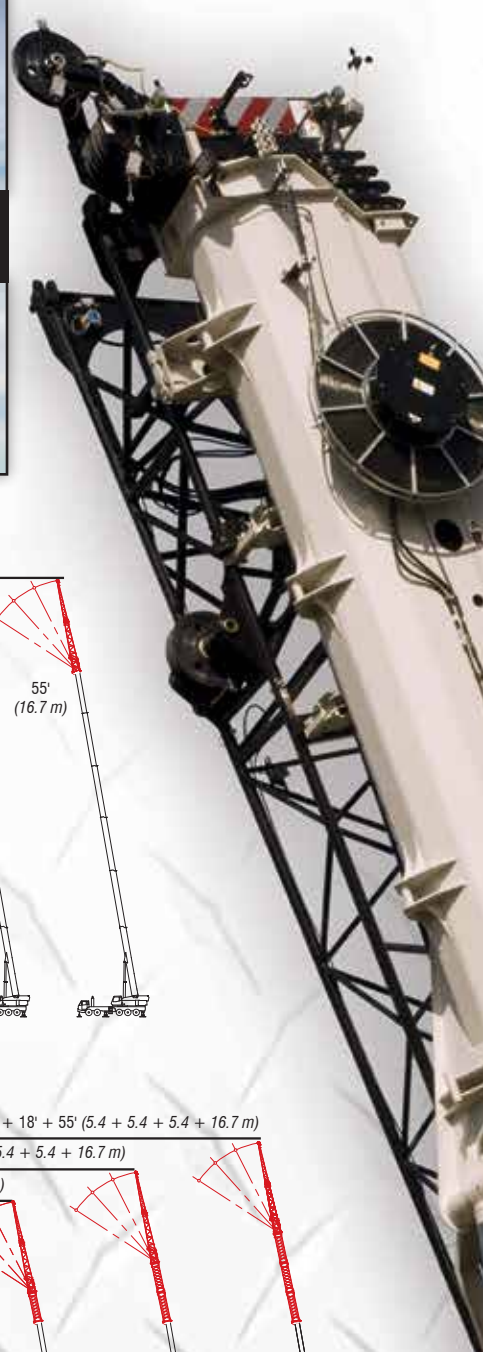
Pull-out CabWalk™ slides out from secured travel position underneath operator's cab

Standard integrated air conditioning

20° tilting cab



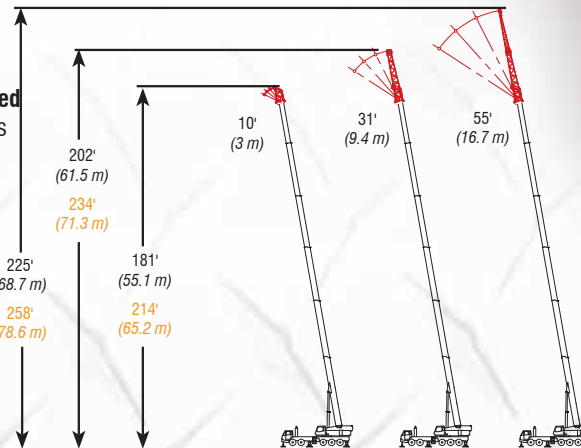
Innovative 10 ft (3.0m) fly is integral to one of the on-board fly options. Over 25 tons (22.6 mt) capacity and one-load two-line lift procedures.



### Powerful and responsive hydraulics

- Six pump, pressure compensated hydraulic system allows **simultaneous and precise function** of boom hoist, winch and swing.
- Two-speed hydraulic piston motor system **delivers superior hoisting**.
- Matched size optional front and rear winches provide equal **max line pulls of 25,955 lbs (115.5 kN)** and **max line speeds of 405 fpm (123.4 m/min)** on 16 inch (.41 m) root diameter grooved drums.
- **Drum rotation indicators** - standard.
- **Bi-directional hydraulic swing motor** mounted to a planetary reduction unit for 360° swing. **Spring applied hydraulic released 360° swing park brake** provides infinite swing park positions as well as free swing when control is in a neutral position.

### Optional Lattice Fly Onboard



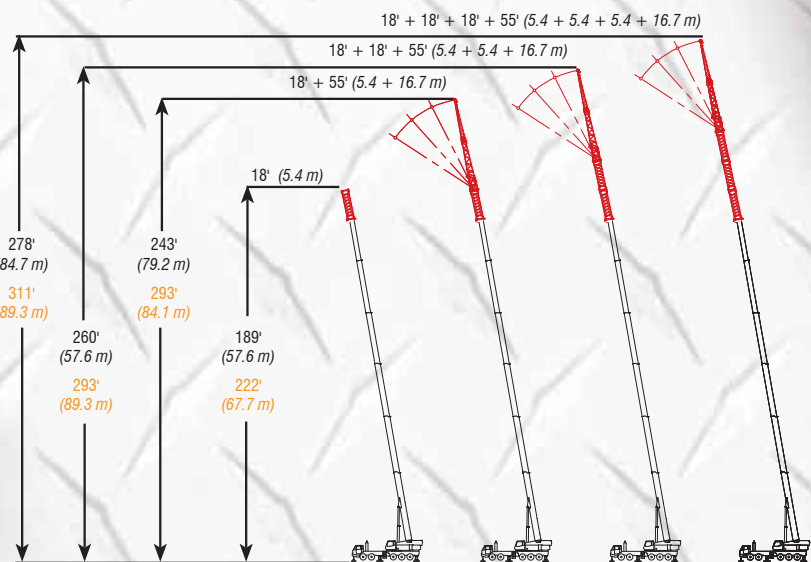
Optional hoist drum cable follower and optional third wrap indicators

Winch viewing cameras

Hydraulic assist winch removal

Rear camera

### Optional Lattice Fly Extension



Black = HTC-3140 Orange = HTC-3140 LB

**Carrier-mounted outrigger controls**, located on each side of the carrier, include an engine throttle-up switch for fast outrigger deployment. For fine level adjusting of the carrier, throttle can be taken down to idle.

**Stow 'n Go outrigger pontoons** are quickly and easily stored and secured for travel, eliminating the need to remove the pontoon each time the crane moves. Pontoon storage space is also available on rear fenders and side access ladders.



The Confined Area Lifting Capacities (CALC) system provides three outrigger positions:

- full retraction
- intermediate extension
- full extension

Outrigger pins eliminate guesswork by automatically positioning outriggers at midpoint position.

## Roomier and quieter operator's cab

- **Extra large front window** seamlessly merges into the roof window
- Sliding left side door, right and rear windows, and swing up top window provide **excellent ventilation**
- All gauges, switches, indicators and controls are placed in the operator's forward line of sight for **excellent ergonomics**
- **All gauges and switches are backlit** for optimal visibility when the cab working lights are switched to the on position
- **Integrated air conditioning** utilizes the same ventilation outlets as the standard heating system



## Multiple counterweight configurations give you capacities for any size job

- **Standard** - Total of 10,800 lbs (4.8 mt) of removable counterweights. Capacities for four different counterweight configurations.
- **Optional** - Up to 18,400 lbs (8.2 mt) of removable counterweights. Capacities for up to six different counterweight configurations.
- All configurations can be raised and lowered by controls located on each side of the upper structure for ease of installation and removal.



## Superior accessibility

Access to the operator's cab and engine compartment is superb with strategically located ladders and steps. The pull-out CabWalk™ slides out from its secured travel position underneath the operator's cab, giving the operator a platform to stand on for easy entry and exit from the cab.



Access to the engine compartments and the operator's cab is superb with strategically-located ladders and steps.



## Total crane operating system

### Link-Belt PULSE

**Link-Belt Pulse** is the Link-Belt designed total crane operating system. It includes the rated capacity limiter, boom extend mode controller (EMC), self-diagnostic capabilities and continuous monitoring of multiple crane functions and conditions. To aid operators in a safe and efficient operation, its high-resolution, color-intense graphic display provides excellent contrast even in direct sunlight.



Out of cab external light bar



Internal light bar



## Telematics. You own the data!

Cellular-based data logging and monitoring system that provides:

- Viewing options for sharing data with distributor and Link-Belt
- Location and operational settings
- Monitor routine maintenance intervals
- Crane and engine monitoring
- Diagnostic and fault codes



Link-Belt Construction Equipment Company is a leader in the design, manufacture and sales of telescopic and lattice boom cranes with headquarters and manufacturing facilities in Lexington, Kentucky, USA. Link-Belt is committed to the manufacture and service of high quality products that satisfy customers worldwide

Towards that end, Link-Belt has pursued a strategy of growth and investment. It has moved aggressively to seize more global market share by producing a broader range of products and strengthening distribution and personnel around the globe.

Link-Belt is also home to a family of passionate professionals with a legacy of innovation and cutting-edge technology spanning over 140 years. These professionals, in a 740,000 sq. ft. (68 748 m2) manufacturing facility and with a culture of continuous innovation, have pushed Link-Belt to be the most modern crane manufacturer in North America.

**Your crane investment is always protected...  
with your Link-Belt distributor.**

When you invest in a Link-Belt crane, you invest in a legacy of outstanding customer support dating back to 1874. The ultimate value of a machine begins with state-of-the-art design and quality manufacturing, but it is the excellent Link-Belt distributor product support that determines its long term value. This philosophy has earned Link-Belt cranes the enviable position of traditionally commanding some of the highest resale prices in the industry.

... to be recognized as a  
**leader**  
**customer service & satisfaction.**  
— The Link-Belt Vision

**Link-Belt**  
*Preferred*

**As a member of Link-Belt Cranes user's group, you will have access to:**

- A comprehensive online library of parts, service & operator manuals for **YOUR** crane
- Interactive, live groundbearing calculations for **YOUR** crane
- Plus a vast array of information on new products, services and special offerings
- Online access to recommended spare parts lists, filter, lube and key lists plus maintenance information and more
- No annual fee or charges to access your crane information

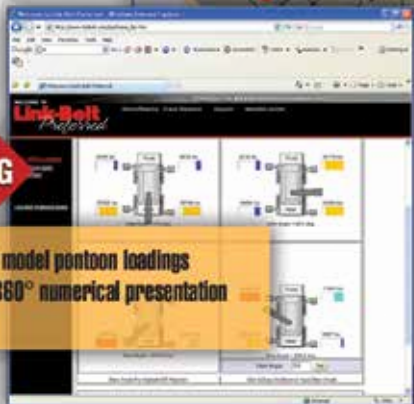
**Online  
3D LIFT  
PLANNING**

- Web-based, active 3D, high graphic
- User-friendly, no CAD program required
- Always current, no updates required
- Print actual lift



**Online  
GROUNDBEARING  
PRESSURES**

- Dynamic specific machine model pontoon loadings
- Graphically illustrated in 360° numerical presentation
- Print out



**Link-Belt  
was born  
because our  
founding father  
understood the  
importance of  
replacement parts.**

William Banta Everett

**Building on that principal...**

- Trained technical specialists
- Faster and more efficient customer service
- State of the art computer information systems
- 24 hours a day, 7 days a week
- 72,000 Sq. Ft. Parts Distribution Center
- All parts in stock ship the same business day

**Link-Belt**  
CRANES  
GENUINE  
**PARTS**



©Link-Belt is a registered trademark. Copyright 2015  
All rights reserved. We reserve the right to change  
designs and specifications at any time. 1534  
Litho in U.S.A. 11/15 #4476 (supersedes #4412)

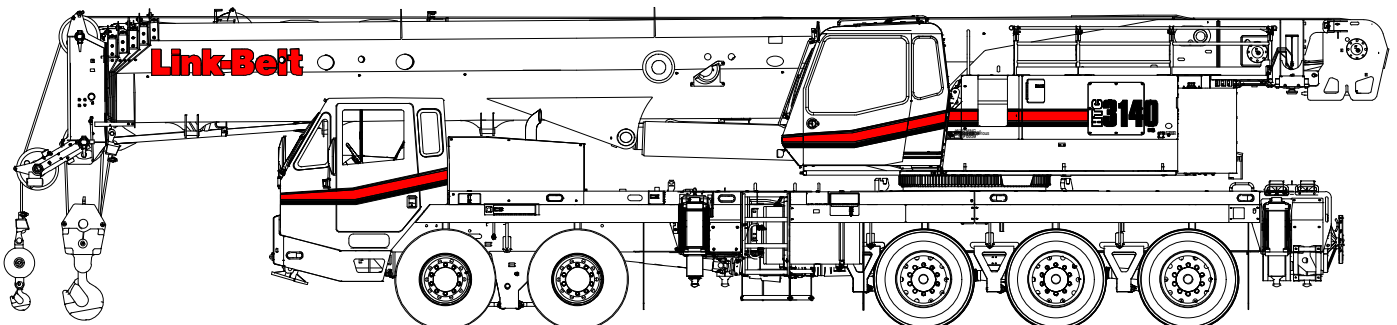
**Link-Belt**  
CRANES  
Lexington, Kentucky | www.linkbelt.com

# Technical Data

## Specifications & Capacities

**HTC** **3140**  
**LB**

Telescopic Boom Truck Crane  
**140 US ton**  
**120 metric ton**



**CAUTION:** This material is supplied for reference use only. Operator must refer to in-cab Crane Rating Manual and Operator's Manual to determine allowable crane lifting capacities and assembly and operating procedures.





# Table Of Contents

|   |           |
|---|-----------|
| <b>Boom, Attachments, and Upper Structure</b> .....         | <b>1</b>  |
| Boom .....  | 1         |
| Boom Wear Pads .....  | 1         |
| Boom Head .....   | 1         |
| Boom Elevation .....  | 1         |
| Auxiliary Lifting Sheave – Optional .....                   | 1         |
| Hook Blocks and Balls – Optional .....                      | 1         |
| Fly – Optional .....  | 1         |
| Fly Extensions – Optional .....                             | 1         |
| Upper Operator’s Cab and Controls .....                     | 2         |
| Swing .....   | 3         |
| Central Lubrication System .....                            | 3         |
| Electrical .....  | 3         |
| Load Hoist System .....                                     | 4         |
| Load Hoist Performance .....                                | 4         |
| 2M Main (Front) and Optional Auxiliary (Rear) Winches ..... | 4         |
| Hydraulic System .....                                      | 5         |
| Pump Drive .....  | 5         |
| Fuel Tank .....   | 5         |
| Engine .....  | 5         |
| Counterweight .....   | 5         |
| <b>Carrier</b> .....  | <b>7</b>  |
| General .....   | 7         |
| Outriggers .....  | 7         |
| Steering and Axles .....                                    | 7         |
| Suspension .....  | 7         |
| Ground Control Outrigger/Suspension Controls .....          | 7         |
| Tires and Wheels .....                                      | 7         |
| Brakes .....  | 7         |
| Central Lubrication System .....                            | 7         |
| Electrical .....  | 7         |
| Engine .....  | 8         |
| Transmission .....  | 8         |
| Fuel Tank .....   | 8         |
| Hydraulic System .....                                      | 8         |
| Pump Drive .....  | 8         |
| Carrier Speeds and Gradeability .....                       | 8         |
| Lower Cab and Controls .....                                | 9         |
| Additional Equipment .....                                  | 10        |
| <b>Axle Loads</b> .....                                     | <b>11</b> |
| <b>Axle Loads with 2–Axle or 3–Axle Boom Dolly</b> .....    | <b>12</b> |

|   |           |
|---|-----------|
| <b>General Dimensions</b> .....   | <b>13</b> |
| <b>Working Range Diagram</b> .....  | <b>14</b> |
| <b>Boom Extend Modes</b> .....  | <b>15</b> |
| <b>Main Boom Lift Capacity Charts – Standard</b> .....  | <b>16</b> |
| 20,000 lb Counterweight – Fully Extended Outriggers – 360° Rotation .....                             | 16        |
| <b>Main Boom Lift Capacity Charts – Optional</b> .....  | <b>17</b> |
| 60,000 lb Counterweight – Fully Extended Outriggers – 360° Rotation .....                             | 17        |
| Main Boom Length (ft) .....   | 17        |
| <b>Manual Offset Fly Attachment Lift Capacity Charts – Optional</b> .....                             | <b>18</b> |
| 20,000 lb Counterweight – Fully Extended Outriggers – 360° Rotation .....                             | 18        |
| Main Boom + 10 ft Manual Offset Fly (2°, 15°, 30°, 45° Offsets) .....                                 | 18        |
| 60,000 lb Counterweight – Fully Extended Outriggers – 360° Rotation .....                             | 19        |
| Main Boom + 10 ft Manual Offset Fly (2°, 15°, 30°, 45° Offsets) .....                                 | 19        |
| 20,000 lb Counterweight – Fully Extended Outriggers – 360° Rotation .....                             | 20        |
| 155.0 ft Main Boom Length + 31 ft & 55 ft Manual Offset Fly (2°, 15°, 30°, 45° Offsets) .....         | 20        |
| 60,000 lb Counterweight – Fully Extended Outriggers – 360° Rotation .....                             | 21        |
| 155.0 ft Main Boom Length + 31 ft & 55 ft Manual Offset Fly (2°, 15°, 30°, 45° Offsets) .....         | 21        |
| 155.0 ft Main Boom Length + 73 ft, 91 ft & 109 ft Manual Offset Fly (2°, 15°, 30°, 45° Offsets) ..... | 22        |
| 20,000 lb Counterweight – Fully Extended Outriggers – 360° Rotation .....                             | 23        |
| 195.3 ft Main Boom Length + 31 ft & 55 ft Manual Offset Fly (2°, 15°, 30°, 45° Offsets) .....         | 23        |
| 60,000 lb Counterweight – Fully Extended Outriggers – 360° Rotation .....                             | 24        |
| 195.3 ft Main Boom Length + 31 ft & 55 ft Manual Offset Fly (2°, 15°, 30°, 45° Offsets) .....         | 24        |
| 195.3 ft Main Boom Length + 73 ft, 91 ft & 109 ft Manual Offset Fly (2°, 15°, 30°, 45° Offsets) ..... | 25        |
| <b>Hydraulic Offset Fly Attachment Lift Capacity Charts – Optional</b> .....                          | <b>26</b> |
| 20,000 lb Counterweight – Fully Extended Outriggers – 360° Rotation .....                             | 26        |
| Main Boom + 10 ft Hydraulic Offset Fly (2°–45° Offsets) .....   | 26        |
| 60,000 lb Counterweight – Fully Extended Outriggers – 360° Rotation .....                             | 27        |
| Main Boom + 10 ft Hydraulic Offset Fly (2°–45° Offsets) .....   | 27        |
| 20,000 lb Counterweight – Fully Extended Outriggers – 360° Rotation .....                             | 28        |
| 155.0 ft Main Boom Length + 31 ft & 55 ft Hydraulic Offset Fly (2°–45° Offsets) .....                 | 28        |
| 60,000 lb Counterweight – Fully Extended Outriggers – 360° Rotation .....                             | 29        |
| 155.0 ft Main Boom Length + 31 ft & 55 ft Hydraulic Offset Fly (2°–45° Offsets) .....                 | 29        |
| 155.0 ft Main Boom Length + 73 ft, 91 ft & 109 ft Hydraulic Offset Fly (2°–45° Offsets) .....         | 30        |
| 20,000 lb Counterweight – Fully Extended Outriggers – 360° Rotation .....                             | 31        |
| 195.3 ft Main Boom Length + 31 ft & 55 ft Hydraulic Offset Fly (2°–45° Offsets) .....                 | 31        |
| 60,000 lb Counterweight – Fully Extended Outriggers – 360° Rotation .....                             | 32        |
| 195.3 ft Main Boom Length + 31 ft & 55 ft Hydraulic Offset Fly (2°–45° Offsets) .....                 | 32        |
| 195.3 ft Main Boom Length + 73 ft, 91 ft & 109 ft Hydraulic Offset Fly (2°–45° Offsets) .....         | 33        |

# Boom, Attachments, and Upper Structure

## ■ Boom

**Design** — Six section, formed construction of extra high tensile steel consisting of one base section and five telescoping sections. The two plate design of each section has multiple longitudinal bends for superior strength. Each telescoping section extends independently by means of one double-acting, single stage hydraulic cylinder with integrated holding valves.

### Boom

- 42.3–195.3 ft (12.9–59.5m) six section boom
- Integral boom dolly connection
- Five boom extend modes (EM1 through EM5), controlled from the operator's cab, provide superior capacities by varying the extension of the telescoping sections:
  - EM1 extends to 195.3 ft (59.5m)
  - EM2 extends to 180.3 ft (55.0m)
  - EM3 extends to 155.0 ft (47.2m)
  - EM4 extends to 129.6 ft (39.5m)
  - EM5 extends to 103.7 ft (31.6m)
- Mechanical boom angle indicator
- Wind speed indicator
- Maximum tip height for each extend mode is:
  - EM1 is 204 ft (62.2m)
  - EM2 is 189 ft (57.6m)
  - EM3 is 164 ft (50.0m)
  - EM4 is 139 ft (42.4m)
  - EM5 is 113 ft (34.4m)

### Boom Wear Pads

- Wear pads with Teflon inserts that self-lubricate the boom sections
- Bottom wear pads are universal for T2, T3, T4, and T5 boom sections
- Bottom wear pads are universal for the base and T1 boom sections
- Top wear pads are universal for all boom sections

### Boom Head

- Six 16.38 in (41.6cm) root diameter nylon sheaves to handle up to twelve parts of line
- Easily removable wire rope guards
- Rope dead end lugs on each side of the boom head
- Boom head is designed for quick-reeve of the hook block

### Boom Elevation

- One double acting hydraulic cylinder with integral holding valve
- Boom elevation:  $-2.5^{\circ}$  to  $80^{\circ}$

### Auxiliary Lifting Sheave — Optional

- Single 16.38 in (41.6m) root diameter nylon sheave
- Easily removable wire rope guards
- Does not affect erection of the fly or use of the main head sheaves

### Hook Blocks and Balls — Optional

- 140 ton (127.0mt) 7 sheave quick-reeve hook block with safety latch
- 100 ton (90.7mt) 6 sheave quick-reeve hook block with safety latch
- 80 ton (72.6mt) 5 sheave quick-reeve hook block with safety latch
- 50 ton (45.4mt) 4 sheave quick-reeve hook block with safety latch
- 35 ton (31.8mt) 1 sheave quick-reeve hook block with safety latch
- 12 ton (10.9mt) hook ball (swivel) with safety latch

### Fly — Optional

- 31–55 ft (9.4–16.7m) two piece bi-fold lattice fly, stowable, offsettable to  $2^{\circ}$ ,  $15^{\circ}$ ,  $30^{\circ}$ , and  $45^{\circ}$ . Maximum tip height is 258 ft (78.6m).
- 10–31 ft–55 ft (3.0–9.4–16.7m) three piece bi-fold lattice fly, stowable, offsettable to  $2^{\circ}$ ,  $15^{\circ}$ ,  $30^{\circ}$ , and  $45^{\circ}$ . Maximum tip height is 258 ft (78.6m).
- 10 ft–31 ft–55 ft (3.0–9.4–16.7m) three piece bi-fold lattice fly, stowable, hydraulically offsettable to  $2^{\circ}$  through  $45^{\circ}$ . Maximum tip height is 258 ft (78.6m).

### Fly Extensions — Optional

- One 18 ft (5.5m) lattice extension, equipped with two 16.38 in (41.6cm) root diameter nylon sheaves, to be mounted between the boom head and fly options. Maximum tip height is 276 ft (84.1m). Minimum of 32,000 lb (14.5t) of counterweight required.
- Two 18 ft (5.5m) lattice extensions, one equipped with two 16.38 in (41.6cm) root diameter nylon sheaves, to be mounted between the boom head and fly options. Maximum tip height is 293 ft (89.3m). Minimum of 32,000 lb (14.5t) of counterweight required.
- Three 18 ft (5.5m) lattice extensions, one equipped with two 16.38 in (41.6cm) root diameter nylon sheaves, to be mounted between the boom head and fly options. Maximum tip height is 311 ft (94.8m). Minimum of 32,000 lb (14.5t) of counterweight required.

## ■ Upper Operator's Cab and Controls

**Environmental Cab** – Fully enclosed, one person cab of galvanneal steel structure with acoustical insulation.

Equipped with:

- Tilting cab up to 20°
- Tinted and tempered glass windows
- Five way adjustable, cushioned seat with headrests, and seat belt
- Extra—large fixed front window with windshield wiper and washer
- Swing up roof window with windshield wiper
- Sliding left side door with large fixed window
- Sliding right side window for ventilation
- Engine dependent warm – water heater with air ducts for front windshield defroster and cab floor
- Defroster fan for the front window
- Bubble level
- Circulating fan
- Sun screen
- Cup holder
- Fire extinguisher
- Left side viewing mirror
- Two position travel swing lock
- AM/FM Radio

**Air Conditioning** – Integral with cab heating system utilizing the same ventilation outlets

**Armrest Controls** – Two dual axis electronic joystick controllers or optional single axis electronic controllers for:

- Swing
- Boom hoist
- Main front winch
- Auxiliary rear winch – optional
- Drum rotation indication
- Drum rotation indicator activation switch
- Winch high/low speed disable switch(es)
- Cab heater and A/C controls
- Throttle lock switch
- Throttle set/resume switch
- Cab tilt switch
- Counterweight handling switch
- Warning horn button
- Swing park brake

### Foot Controls

- Boom Telescope
- Swing brake
- Engine throttle

**Right Front Console** – Controls and indicators for:

- Warning horn button
- Function disable switch
- Cab floodlights switch
- Console dimmer switch
- 2–12 volt accessory outlet (Switched & Unswitched)
- Emergency engine shutdown
- Windshield wiper/washer switch
- Outrigger keypad
- Upper ignition switch
- Lower ignition switch
- Boom floodlights switch – optional
- Rotating beacon/strobe light switch – optional
- Hydraulic offset fly switch – optional

**Camera Display** – Located on dash console

- Displays right side of upper
- Displays main and auxiliary winches

**Cab Instrumentation** – Ergonomically positioned LCD display, CANBUS instrumentation for crane operation including:

- Tachometer & Engine speed value (RPM)
- Coolant temperature level gauge, warning indicator & value (F)
- Hydraulic temperature level gauge, warning indicator & value (F)
- Fuel level gauge & low level warning indicator
- DEF level gauge & low level warning indicator<sup>(1)</sup>
- Engine Diagnostics & fault codes
- Swing park brake warning indicator
- Engine oil pressure warning indicator
- Charge filter warning indicator
- Stop engine indicator
- Check engine indicator
- Wait to start indicator
- High exhaust temperature indicator
- Exhaust system cleaning indicator
- Exhaust system cleaning Disabled indicator
- Engine air filter high restriction indicator
- Battery voltage warning indicator & value (V)
- Fuel rate value (gal/hr)
- Engine hours (Hrs)
- Engine load value (%)
- Exhaust system cleaning initiate switch
- Exhaust system cleaning inhibit switch
- Outrigger level indicator
- Electronic Control Diagnostics & mode indicator
- Service interval indicators
  - Hydraulic oil life indicator
  - Engine oil indicator
  - Next service indicator – user defined
- Carrier engine gauges and indicators
- Fine metering mode indicator, function set & %
- Third wrap indicator activation & setup

**Diagnostic Center** – Located on the left side of the front panel below the windshield

- Engine diagnostic
- RCL CANBUS diagnostic
- Boom CANBUS diagnostic
- Crane Controller USB diagnostic
- RCL controller USB diagnostic
- Manual crane control connection

**Manual Telescope Control** – Located on the upper work platform

- Manual boom telescope control connection

<sup>(1)</sup> (Tier 4f / Stage IV engine only)

**Link-Belt Pulse** – The Link-Belt in-house designed, total crane operating system that utilizes the display as a readout and operator interface for the following systems:

- **Rated capacity limiter** – LCD graphic audio – visual warning system integrated into the dash with anti – two block and function limiter. Operating data includes:
  - Crane configuration
  - Boom length and angle
  - Boom head height
  - Allowed load and % of allowed load
  - RCL light bar
  - Boom angle
  - Radius of load
  - Actual load
  - Wind speed
  - Unit Conversion
  - Multiple language capabilities
  - Highlighted unit of measurement on working screen
  - Active pin/latch status
  - Telescope operation displayed in real time
  - Counterweight installation/removal
  - Third wrap indicator
  - Diagnostics
  - Operator settable alarms (include):
    - Maximum and minimum boom angles
    - Maximum tip height
    - Maximum boom length
    - Swing left/right positions
    - Operator defined area (imaginary plane)
  - Outrigger position sensing
- **Telematics** – Cellular–based data logging and monitoring system that provides:
  - Location and operational settings
  - Routine maintenance
  - Crane and engine monitoring
  - Diagnostic and fault codes
- **Extend control module (ECM)**
  - Controls the extend modes
  - Diagnostics
- **Electronic controllers**
  - Controls all load lifting functions
  - Diagnostics
- **Fine metering**
  - Controls the initial reaction speeds of the main and auxiliary winches, boom hoist, and swing functions
  - Diagnostics

**Integrated Third Wrap Indicator – Optional** – Link–Belt Pulse color display visually and audibly warns the operator when the wire rope is on the first/bottom layer and when the wire rope is down to the last three wraps.

**Integrated Third Wrap Function Kickout – Optional** – Link–Belt Pulse color display visually and audibly warns the operator when the wire rope is on the first/bottom layer and provides a function kickout when the wire rope is down to the last three wraps.

**Internal RCL Light Bar** – Visually informs the operator when crane is approaching maximum load capacity with a series of green, yellow, and red lights.

**External RCL Light Bar – Optional** – Visually informs the ground crew when crane is approaching maximum load capacity with a series of green, yellow, and red lights.

## ■ Swing

**Motor/Planetary** – Bi–directional hydraulic swing motor mounted to a planetary reducer for 360° continuous smooth swing at 1.5 rpm.

**Swing Park Brake** – 360°, electric over hydraulic, (spring applied/hydraulic released) multi–disc brake mounted on the speed reducer. Operated by a switch from the operator’s cab.

**Swing Brake** – 360°, foot operated, hydraulic applied disc brake mounted to the speed reducer.

**Swing Lock** – Two–position swing lock (boom over front or rear) operated from the operator’s cab.

**360° Positive Swing Lock – Optional** – Meets New York City requirement.

## ■ Central Lubrication System

Automated lubrication unit that injects grease into the turntable bearing, boom hoist cylinder pins, boom foot pins, house lock (2–position), and cab tilt cylinder. Activated by a timer on the ignition switch.

## ■ Electrical

Two 12V batteries provide operation and starting. CANBUS wiring and components.

**Swing Alarm** – Audio/visual warning device signals when the upper is swinging.

### Lights

- Two LED working lights on the front of the cab
- One LED working light on the top of the cab – optional
- One amber strobe beacon on top of the cab – optional
- Boom floodlight – Single – optional
- Boom floodlight – Dual – optional
- Boom floodlight – High intensity remote controlled – optional

**Power Panel** – Sealed power panel containing:

- Battery disconnects
- Hour meter
- Fuses, circuit breakers, relays, diodes, resistors
- Control modules

## ■ Load Hoist System

### Load Hoist Performance

| Main (Front) and Auxiliary (Rear) Winches — 7/8 in (22mm) Rope |                   |       |                   |       |                 |       |       |      |       |       |
|--|-------------------|-------|-------------------|-------|-----------------|-------|-------|------|-------|-------|
| Layer  | Maximum Line Pull |       | Normal Line Speed |       | High Line Speed |       | Layer |      | Total |       |
|  | lb                | kN    | ft/min            | m/min | ft/min          | m/min | ft    | m    | ft    | m     |
| 1  | 25,955            | 115.5 | 131               | 39.9  | 262             | 79.9  | 125   | 38.1 | 125   | 38.1  |
| 2  | 23,418            | 104.2 | 145               | 44.2  | 291             | 88.7  | 138   | 42.0 | 263   | 80.2  |
| 3  | 21,332            | 94.9  | 159               | 48.8  | 319             | 97.2  | 152   | 46.3 | 415   | 126.5 |
| 4  | 19,588            | 87.1  | 174               | 53.0  | 348             | 106.0 | 165   | 50.3 | 588   | 179.2 |
| 5  | 18,108            | 80.5  | 188               | 57.3  | 376             | 114.6 | 179   | 54.6 | 759   | 231.3 |
| 6  | 16,835            | 74.9  | 202               | 61.5  | 405             | 123.4 | 192   | 58.5 | 951   | 289.9 |

| Wire Rope Application  |          | Diameter |    | Type   | Maximum Permissible Load |       |
|------------------------|----------|----------|----|--|--------------------------|-------|
|                        |          | in       | mm |  | lb                       | kN    |
| Main (Front) Winch     | Standard | 7/8      | 22 | 18x19 rotation resistant — right regular lay (Type RB) | 17,520                   | 77.9  |
|                        | Optional | 7/8      | 22 | 36x7 rotation resistant — right regular lay (Type ZB)  | 20,920                   | 93.0  |
|                        | Optional | 7/8      | 22 | 34x7 rotation resistant — right regular lay (Type YB)  | 21,680                   | 96.43 |
| Auxiliary (Rear) Winch | Standard | 7/8      | 22 | 18x19 rotation resistant — right regular lay (Type RB) | 17,520                   | 77.9  |
|                        | Optional | 7/8      | 22 | 36x7 rotation resistant — right regular lay (Type ZB)  | 20,920                   | 93.0  |
|                        | Optional | 7/8      | 22 | 34x7 rotation resistant — right regular lay (Type YB)  | 21,680                   | 96.43 |

### 2M Main (Front) and Optional Auxiliary (Rear) Winches

- Axial piston, full and half displacement (2—speed) motors driven through planetary reduction unit for positive control under all load conditions.
- Grooved lagging
- Power up/down mode of operation
- Hoist drum cable follower — optional
- Drum rotation indicator
- Drum diameter: 15 in (38.1cm)
- Rope length:
  - Main (Front): 900 ft (274.3m)
  - Auxiliary (Rear): 675 ft (205.7m) or 900 ft (274.3m)
- Maximum rope storage: 951 ft (289.9m)
- Terminator style socket and wedge

## ■ Hydraulic System

All functions are hydraulically powered allowing positive precise control with independent or simultaneous operation of all functions.

### Main Pumps

- One, three section gear pump for the boom hoist, telescope, swing, and charge circuits.
- Two, closed-loop piston pumps are mounted to the rear of the pump drive. The front pump drives the front winch and the rear pump drives the optional rear winch.
- One, pressure compensated piston pump mounted to the rear of the rear winch pump supplies hydraulic power to the controls, counterweight handling, and hydraulically offsettable fly (optional) circuits.

**Hydraulic Reservoir** – 155 gal (586.7L) capacity equipped with sight level gauge. Diffusers built in for deaeration. Magnetic drain plug and large internal magnet.

### Filtration

- One, 6-micron filter located inside hydraulic reservoir, accessible for easy replacement
- One, 6-micron charge filter located next to the reservoir with an in-cab indicator light
- One, magnetic suction strainer located inside the hydraulic reservoir

**Valve Control “fine inching” Mode** – Special fine metering valve settings, selectable from the operator’s cab, allows very slow movements to the main and auxiliary winches, boom hoist, and swing for precision work.

**Counterbalance Valves** – All boom extend cylinders and boom hoist cylinder are equipped with counterbalance valves to provide load lowering and prevents accidental load drop when hydraulic power is suddenly reduced.

**Hydraulic Oil Cooler** – Remote mounted, removes heat from the hydraulic oil.

**Boom Hoist Float Valves** – For transporting the boom over the rear of the crane with a boom dolly. Allows hydraulic oil within the boom hoist cylinder to flow between piston side and case side.

**Swing Brake Release Valve** – For transporting the boom over the rear of the crane with a boom dolly. Holds the 360° swing park brake in the released position allowing free rotation of the upperstructure.

## ■ Pump Drive

All pumps are mechanically driven by the diesel engine. Boom hoist and telescope pumps have an activation delay during engine start to aid in cold weather starting.

## ■ Fuel Tank

One 60 gal (227.1L) capacity tank

One 5 gal (18.9L) capacity diesel exhaust fluid (DEF) plastic tank

## ■ Engine

| Specification   | Cummins QSB – 6.7               |
|---|---------------------------------|
| Emissions Compliance Level:   | Tier 4f/Stage IV <sup>(1)</sup> |
| Maximum allowable sulfur content of fuel (PPM):   | 15                              |
| Numbers of cylinders  | 6                               |
| Cycle   | 4                               |
| Bore and Stroke: inch (mm)  | 4.21 x 4.88 (107x124)           |
| Piston Displacement: in <sup>3</sup> (L)  | 409 (6.7)                       |
| Max. Brake Horsepower: hp (kW)  | 250 (186) @ 2,000 rpm           |
| Peak Torque: ft lb (Nm)   | 730 (990.0) @ 1,500 rpm         |
| Alternator: volts – amps  | 12 – 160                        |
| Crankcase Capacity: qt (L)  | 18.4 (17.4)                     |
| <ul style="list-style-type: none"> <li>• 120 V engine block heater</li> <li>• Water/fuel separator w/heater and water in fuel (WIF) sensor.</li> </ul> <p><sup>(1)</sup> Can only be sold and/or operated where Tier 4f/Stage IV off-highway emission standards are accepted.</p> |                                 |

## ■ Counterweight

**Standard** – Total of 20,000 lb (9t) consisting of auxiliary winch or 2,000 lb (0.9t) counterweight and four hydraulically removable counterweights. Assembled and disassembled by hydraulic cylinders controlled from the operator’s cab with capacities for:

- 0 lb (0t) counterweight
- 4,000 lb (1.8t) counterweight
- 8,000 lb (3.6t) counterweight
- 14,000 lb (6.3t) counterweight
- 20,000 lb (9t) counterweight

**Optional** – 12,000 lb (5.4t) in addition to standard counterweight for a total of 32,000 lb (14.5t) counterweight with additional capacities for:

- 32,000 lb (14.5t) counterweight

**Optional** – 25,000 lb (11.3t) in addition to standard counterweight for a total of 45,000 lb (20.4t) counterweight with additional capacities for:

- 32,000 lb (14.5t) counterweight
- 45,000 lb (20.4t) counterweight

**Optional** – 40,000 lb (18.1t) in addition to standard counterweight for a total of 60,000 lb (27.2t) with additional capacities for:

- 32,000 lb (14.5t) counterweight
- 45,000 lb (20.4t) counterweight
- 60,000 lb (27.2t) counterweight\*

Low speed jobsite travel is offered for these optional counterweight configurations and a boom dolly or boom trailer may be required for on-highway travel.

\* Overall width of the crane increases to 13 ft 8 in (4.2m) for this counterweight configuration.

**20,000 lb (9t)**

- A\* 2,000 lb (0.9t) Top or Auxiliary Winch
- B 2,000 lb (0.9t) Top Tray
- C 4,000 lb (1.8t) Bottom Tray
- D 6,000 lb (2.7t) Piece
- D 6,000 lb (2.7t) Piece

**32,000 lb (14.5t)**

- A\* 2,000 lb (0.9t) Top or Auxiliary Winch
- B 2,000 lb (0.9t) Top Tray
- E 12,000 lb (5.4t) Piece
- C 4,000 lb (1.8t) Bottom Tray
- D 6,000 lb (2.7t) Piece
- D 6,000 lb (2.7t) Piece

**45,000 lb (20.4t)**

- B 2,000 lb (0.9t) Top Tray
- A\* 2,000 lb (0.9t) Top or Auxiliary Winch
- F 13,000 lb (5.9t) Piece
- E 12,000 lb (5.4t) Piece
- C 4,000 lb (1.8t) Bottom Tray
- D 6,000 lb (2.7t) Piece
- D 6,000 lb (2.7t) Piece

**60,000 lb (27.2t)**

- B 2,000 lb (0.9t) Top Tray
- A\* 2,000 lb (0.9t) Top or Auxiliary Winch
- F 13,000 lb (5.9t) Piece
- G 7,500 lb (3.4t) Piece
- C 4,000 lb (1.8t) Bottom Tray
- E 12,000 lb (5.4t) Piece
- D 6,000 lb (2.7t) Piece
- D 6,000 lb (2.7t) Piece
- G 7,500 lb (3.4t) Piece

| Counterweight Packages             |                   | 20,000 lb (9t) – Standard    |                          |                             |                       |                       |                        |                        |                       |                       |   |
|------------------------------------|-------------------|------------------------------|--------------------------|-----------------------------|-----------------------|-----------------------|------------------------|------------------------|-----------------------|-----------------------|---|
|                                    |                   | 32,000 lb (14.5t) – Optional |                          |                             |                       |                       |                        |                        |                       |                       |   |
| Counterweight Modules              |                   | 45,000 lb (20.4t) – Optional |                          |                             |                       |                       |                        |                        |                       |                       |   |
|                                    |                   | 60,000 lb (27.2t) – Optional |                          |                             |                       |                       |                        |                        |                       |                       |   |
|                                    |                   | A                            | B                        | C                           | D                     | D                     | E                      | F                      | G                     | G                     |   |
|                                    |                   | 2,000 lb (0.9t) Top*         | 2,000 lb (0.9t) Top Tray | 4,000 lb (1.8t) Bottom Tray | 6,000 lb (2.7t) Piece | 6,000 lb (2.7t) Piece | 12,000 lb (5.4t) Piece | 13,000 lb (5.9t) Piece | 7,500 lb (3.4t) Piece | 7,500 lb (3.4t) Piece |   |
| Counterweight Usage Configurations | 0 lb (0t)         |                              |                          |                             |                       |                       |                        |                        |                       |                       |   |
|                                    | A,B               | 4,000 lb (1.8t)              | X                        | X                           |                       |                       |                        |                        |                       |                       |   |
|                                    | A,B,C             | 8,000 lb (3.6t)              | X                        | X                           | X                     |                       |                        |                        |                       |                       |   |
|                                    | A,B,C,D           | 14,000 lb (6.3t)             | X                        | X                           | X                     | X                     |                        |                        |                       |                       |   |
|                                    | A,B,C,D,D         | 20,000 lb (9t)               | X                        | X                           | X                     | X                     | X                      |                        |                       |                       |   |
|                                    | A,B,C,D,D,E       | 32,000 lb (14.5t)            | X                        | X                           | X                     | X                     | X                      | X                      |                       |                       |   |
|                                    | A,B,C,D,D,E,F     | 45,000 lb (20.4t)            | X                        | X                           | X                     | X                     | X                      | X                      | X                     |                       |   |
|                                    | A,B,C,C,D,E,F,G,G | 60,000 lb (27.2t)            | X                        | X                           | X                     | X                     | X                      | X                      | X                     | X                     | X |

\* Auxiliary winch replaces this counterweight for a two-drum configuration



# Carrier

## ■ General

- 9 ft 10 in (3.0m) wide
- 28 ft 1 in (8.56m) wheelbase (centerline of first axle to centerline of fifth axle)
- **Frame** — Box-type, torsion resistant, welded construction made of high tensile steel. Equipped with front and rear towing and tie-down lugs, tow connections, and access ladders.

## ■ Outriggers

**Boxes** — Two double box, front and rear welded to the carrier frame

**Beams and Jacks** — Four dual stage beams with Confined Area Lifting Capacities (CALC) provide selectable outrigger extensions of full, intermediate, and retracted positions. Jacks with integral check valves, hydraulically controlled from the operator's cab and on both sides of carrier. A fifth front bumper outrigger with integral check valves is hydraulically controlled from the operator's cab, left & right O/R keypads and at the front bumper of carrier and includes a horn pressure switch for overload signaling.

### Pontoons

- **Main** — Four lightweight, stow'n go, 26" (66cm) diameter steel pontoons with a contact area of 531 in<sup>2</sup> (3 425cm<sup>2</sup>) can be stored for road travel in either the storage racks on the carrier or under the outrigger boxes
- **Front Bumper** — One, lightweight, self-storing, 16" (40.6cm) diameter steel pontoon with a contact area of 201 in<sup>2</sup> (1 296cm<sup>2</sup>)

### Jack Reaction

- **Main** — 160,000 lb (711.7kN) force and 301 psi (2 075kPa) ground bearing pressure
- **Front Bumper** — 66,000 lb (293.6kN) force and 303 psi (2 089kPa) ground bearing pressure

## ■ Steering and Axles

- Full integral master gear/slave gear steering system provides hydraulic assisted steering with mechanical link between steering wheel and wheels
- **Drive** — 10 x 6 for on/off-highway travel
- **Axle 1 & 2** — Tandem steered, non-driven
- **Axle 3, 4, & 5** — Tridem non-steered, driven
- **Inter-Axle Differential Lock** — Traction adding device that locks axle 3 with axle 4 and axle 4 with axle 5. Operated by a switch from the carrier cab.
- **Transaxle (Cross-axle) Differential Lock** — Traction adding device that locks differentials within axles 3, 4, and 5. Operated by a switch from the carrier cab.

## ■ Suspension

Hydro-pneumatic with automatic ride height leveling, independent front, rear, left & right adjustment, automatic cylinder locking that allows cylinder extension & retraction while raised on jacks and longitudinal and transverse trailing arms at all axles. The carrier suspension cylinders can be extended and retracted from controls in the carrier cab shifter console, from buttons in the carrier cab display and from left & right O/R keypads.

- Cylinder stroke: -3.5 in (-88.9mm) / +3.5 in (88.9mm)

## ■ Ground Control Outrigger/Suspension Controls

Environmentally sealed and ergonomically positioned, control stations located on both sides of the carrier with controls for crane operations including:

- Starts and stops carrier engine
- Throttles carrier engine up and down
- Suspension operation including:
  - Retract suspension (raise suspension) on outriggers
  - Retract suspension (Lower the carrier) on tires
- Outrigger operation including:
  - Extends and retracts two beams together
  - Extends and retracts all jacks together
  - Extend and retract fifth (bumper) outrigger
  - Automatic leveling on outriggers
- Outrigger lighting
- Bubble level

## ■ Tires and Wheels

**Front** — Four (single) 445/65R22.5 tires on aluminum disc wheels

**Rear** — Twelve (dual) 12R24.5 tires on aluminum disc wheels

- Spare tires and wheels — optional
- Tire inflation kit — optional

## ■ Brakes

**Service** — Full air anti-lock (ABS) brakes on all wheel ends. Dual circuit compressed air system with air dryer.

**Parking/Emergency** — Spring loaded type, acting on 3rd, 4th, and 5th axles automatically apply when air pressure drops below 40 psi (275.8kPa) in both circuits.

**Hill Start Aid (HSA)** — Prevents roll-back or roll-forward while launching on grades.

## ■ Central Lubrication System

Automated lubrication unit that injects grease into the steering gear arms, steering knuckles, axle king pins, and suspension cylinders. Activated by a timer on the lubrication unit.

## ■ Electrical

**Battery** — Three batteries provide 12 volt starting and operation

### Lights

- Front lighting includes two main daytime running/headlights, two high beam lights, two parking/directional indicators, and three cab marker lights.
- Side lighting includes three parking/directional indicators per side.
- Rear lighting includes two parking/directional indicators, two parking/brake lights, two reverse lights, three marker lights, and a license plate light.
- Other equipment includes hazard/warning system, cab lights, instrument panel lights, fuel filler light, storage box light, and rear step lights.
- One amber strobe beacon behind the cab
- Outrigger working lights

## ■ Engine

| Specification  | Cummins ISX 15                                   |
|--|--|
| Emission compliance level:   | EPA2013 <sup>(1)</sup>                           |
| Maximum allowable sulfur content of fuel (PPM):  | 15   |
| Numbers of cylinders   | 6  |
| Cycle  | 4  |
| Bore and Stroke: inch (mm)   | 5.39 x 6.65 (137x169)                            |
| Piston Displacement: in <sup>3</sup> (L)   | 912 (14.9)                                       |
| Max. Brake Horsepower: hp (kW)   | 581 (434) @ 2,000 rpm<br>550 (410.0) @ 1,800 rpm |
| Peak Torque: ft lb (Nm)  | 1,850 (2 508) @ 1,200 rpm                        |
| Alternator: volts – amps   | 12 – 160   |
| Crankcase Capacity: qt (L)   | 52 (49.2)  |
| <ul style="list-style-type: none"> <li>• Cruise control</li> <li>• Three-stage engine compression brake</li> <li>• Engine driven variable speed fan</li> <li>• Thermostatically controlled radiator</li> <li>• 120 V engine block heater</li> <li>• Ether injection system – optional</li> </ul> |  |
| <sup>(1)</sup> Can only be sold and/or operated where EPA2013 on–highway emission standards are accepted.  |  |

## ■ Transmission

**Main Transmission** – Automated – Eaton Ultra Shift<sup>□</sup> Plus w/Hill Start Aid (HSA) (no clutch pedal) transmission with 11 forward gears and 3 reverse gears.

**Auxiliary Transmission** – Air actuated manual transmission with two gears.

## ■ Carrier Speeds and Gradeability

| Eaton Ultra Shift <sup>□</sup> Plus |       | Speed  |        |        |       | Gradeability<br>(@ peak torque Except Creep @ Idle) |       |
|-------------------------------------|-------|--------|--------|--------|-------|---|-------|
| Gear                                | Ratio | (1.00) |        | (2.04) |       | % Grade   |       |
|                                     |       | mph    | km/h   | mph    | km/h  | Min.  | Max.  |
| 11th                                | 0.73  | 65.62  | 105.61 | 32.16  | 51.76 | 1.69  | 3.45  |
| 10th                                | 1.00  | 47.90  | 77.09  | 23.48  | 37.79 | 2.90  | 5.67  |
| 9th                                 | 1.38  | 34.71  | 55.86  | 17.01  | 27.37 | 4.46  | 8.71  |
| 8th                                 | 1.95  | 24.56  | 39.53  | 12.04  | 19.38 | 6.71  | 13.21 |
| 7th                                 | 2.77  | 17.29  | 27.83  | 8.48   | 13.65 | 9.88  | 19.64 |
| 6th                                 | 3.79  | 12.64  | 20.34  | 6.20   | 9.98  | 13.80   | 27.61 |
| 5th                                 | 5.23  | 9.16   | 14.74  | 4.49   | 7.23  | 19.31   | 38.84 |
| 4th                                 | 7.41  | 6.46   | 10.40  | 3.17   | 5.10  | 23.17   | 46.69 |
| 3rd                                 | 11.85 | 4.04   | 6.50   | 1.98   | 3.19  | 28.96   | 58.49 |
| 2nd                                 | 16.30 | 2.94   | 4.73   | 1.44   | 2.32  | 30.92   | 62.50 |
| 1st                                 | 26.08 | 1.84   | 2.96   | 0.90   | 1.45  | 38.66   | 78.28 |
| Reverse (1)                         | 20.84 | 2.30   | 3.70   | 1.13   | 1.82  | 33.30   | 67.36 |
| Reverse (2)                         | 13.03 | 3.68   | 5.92   | 1.80   | 2.90  | 20.59   | 41.42 |
| Reverse (3)                         | 3.43  | 13.96  | 22.47  | 6.29   | 10.12 | 6.50  | 14.02 |
| 1st @ Idle                          | 26.08 | 0.60   | 0.97   | 0.32   | 0.51  |   |       |
| 2nd @ Idle                          | 16.30 | 0.96   | 1.54   | 0.50   | 0.80  |   |       |
| 3rd @ Idle                          | 11.85 | 1.31   | 2.11   | 0.69   | 1.11  |   |       |
| Reverse (1) @ Idle                  | 20.84 | 0.75   | 1.21   | 0.39   | 0.63  |   |       |
| Reverse (2) @ Idle                  | 13.03 | 1.19   | 1.92   | 0.63   | 1.01  |   |       |

Based on a gross vehicle weight of 118,500 lbs (53 750.7kg)

## ■ Fuel Tank

- One 95 gal (359.6L) capacity tank
- One 10 gal (37.8L) capacity diesel exhaust fluid (DEF) plastic tank

## ■ Hydraulic System

All functions are hydraulically powered allowing positive, precise control with independent or simultaneous operation of all functions.

### Main Pumps

- One fixed displacement gear pump for the steering circuit
- One fixed displacement gear pump for suspension and outriggers
- Combined pump capacity of 41 gpm (155.2Lpm)

**Hydraulic Reservoir** – 35 gal (132.5L) capacity equipped with sight level gauge. Diffusers built in for deaeration.

**Filtration** – Two 10 micron, full flow, return line filters. All oil is filtered prior to return to reservoir. Accessible for easy filter replacement.

## ■ Pump Drive

All pumps are mechanically driven by the diesel engine. Suspension and outriggers pump is direct mounted to the PTO at the bottom of the transmission. Steering pump is direct mounted to the engine.

## ■ Lower Cab and Controls

**Environmental Cab** — Fully enclosed, one person cab of composite structure with acoustical insulation. Equipped with:

- Tinted and tempered glass windows
- Roll down left side window for ventilation
- Right side window
- Adjustable sun visor
- Intermittent windshield wiper and washer
- Two remote control, heated, side view mirrors
- 3 LED Dome lights
- Six way adjustable and air suspended driver's seat with seat belt
- Fire extinguisher
- 2 Coat hooks
- Document storage unit

**Air Conditioning** — A/C with integral Engine dependent warm-water heater and fresh air intake or air recirculation with air ducts for windshield defroster and cab floor.

**Overhead console** — Located above the sun visor

- Document storage unit
- AM/FM Radio
- 2 — 12 volt accessory outlet (switched & unswitched)
- Strobe/Beacon switch (optional)

**Camera Display** — Located on dash console

- Displays right side of machine
- Displays rear view

**Cab Instrumentation** — Ergonomically positioned instrumentation for driving including:

- Speedometer with odometer, hour meter, trip meter, and clock
- Tachometer
- Front and rear system air pressure with warning indicator
- Diesel emissions fluid level with warning indicator

**Dash Mounted LCD Display** — Ergonomically positioned on the right of driver's front dash panel, digital instrumentation and indicators for crane operations including:

### Gauges

- Engine water temperature
- Engine oil pressure
- Fuel level
- Voltmeter

### Indicator Lights

- Check engine
- Stop engine
- Malfunction indicator lamp<sup>(1)</sup>
- Diesel Exhaust Fluid (DEF) low level<sup>(1)</sup>
- High exhaust temperature
- Exhaust regeneration
- Regeneration inhibit
- Air Filter restriction
- Park brake
- Swing brake
- Anti-lock Brake System (ABS)
- Trailer ABS
- Transaxle (cross-axle) differential lock
- Inter-axle differential lock
- Travel mode
- Ride height
- Cruise
- Seat belt
- 2-Speed Aux Transmission
- Traction control
- Hill start aid (HSA)
- PTO

### Diagnostic Screens

- Engine
- Aftertreatment
- Suspension/Outriggers
- Telematics Mode

### Dash Mounted Indicators For:

- Turn signal indication
- High beam headlights

**Dash Panel** — Controls and indicators for:

- Travel mode switch
- Carrier lights
- Dash panel dimmer switch
- Diesel particulate filter (DPF) inhibit switch
- DPF Regeneration switch
- PTO switch
- Remote mirror control switches
- Mirror heating switch
- Cab heater/air conditioning switch
- Cab heater/air conditioning fan switch
- Fresh air or recirculation switch
- Temperature control knob
- Carrier engine ignition switch

<sup>(1)</sup> (EPA 2013 engine only)

**Right Side Dash Panel** – Controls and indicators for:

- Park brake air valve
- Trailer brake air valve
- Inter-axle differential lock switch
- Transaxle (cross-axle) differential lock switch
- Traction control switch
- Transmission digital display
- Fan override switch

**Right Side Shifter Console** – Controls and indicators for:

- Transmission gear shifting
- Front axles (axles 1 & 2) suspension height switch
- Rear axles (axles 3–5) suspension height switch
- Ride height switch
- Engine compression brake controls
- Cruise controls
- Auxiliary transmission range selector switch
- Shifter console dimmer switch

**Steering Column Controls For:**

- Turn signal switch
- High beam switch
- Steering wheel adjustments
- Warning horn
- Hazard light switch
- Intermittent windshield wiper and washer

**Foot Controls For:**

- Carrier service brakes
- Engine throttle

**Engine & Transmission Diagnostic** – Located under the dash contains:

- Engine/Transmission diagnostic

**Fuse & Diagnostic Center** – Located inside cab behind seat contains:

- Fuses, Relays
- Control Modules

**Diagnostic Center:**

- ABS Diagnostic
- Suspension Diagnostic
- Cab display diagnostic

**■ Additional Equipment****Standard:**

- Aluminum full deck fenders with mud flaps
- Tow right side aluminum storage boxes
- Air hose connection ports
- Clearance flags

**Optional:**

- Pneumatic and electrical quick disconnect connectors mounted on the rear for trailer or boom dolly brakes and lights
- Rear mounted pintle hook

# Axle Loads

| Base crane with full tank of fuel<br>and 2,000 lb (0.9t) counterweight                                  | Gross Vehicle Weight<br>( <sup>1</sup> ) |        | Front Axles |        | Rear Axles |        |
|---|--|--------|-------------|--------|------------|--------|
|   | lb                                       | kg     | lb          | kg     | lb         | kg     |
|   | 109,904                                  | 49 852 | 43,216      | 19 603 | 66,689     | 30 250 |
| Driver in carrier cab   | 250                                      | 113    | 311         | 141    | -61        | -28    |
| Rear pintle hook  | 44                                       | 20     | -23         | -10    | 67         | 30     |
| Pneumatic and electrical connectors for trailer or boom dolly   | 15                                       | 7      | 1           | -1     | 13         | 6      |
| Ether injection   | 6  | 3      | 9           | 4      | -2         | 1      |
| Remove 2,000 lb (0.9t) of ctwt — for one winch configuration only                                       | -2,039                                   | -925   | 1,054       | 478    | -3,093     | -1 403 |
| Hoist drum follower — main  | 101                                      | 46     | -43         | -19    | 144        | 65     |
| Auxiliary winch with 675 ft (205.7m) of 7/8" (22mm) wire rope   | 1,213                                    | 550    | -575        | -261   | 1,789      | 812    |
| Remove auxiliary winch with 675 ft (205.7m) of 7/8" (22mm) wire rope — for two winch configuration only | -3,019                                   | -1 369 | 1,546       | 701    | -4,565     | -2 071 |
| Hoist drum follower — auxiliary   | 101                                      | 46     | -57         | -26    | 158        | 72     |
| Substitute 675 ft (205.7m) of rope with 900 ft (274.3m) of rope — auxiliary                             | 378                                      | 171    | -173        | -78    | 551        | 250    |
| Remove 900 ft (274.3m) of rope from front (main) winch  | -1,535                                   | -696   | 509         | 231    | -2,044     | -927   |
| Remove 675 ft (205.7m) of rope from rear (auxiliary) winch  | -1,157                                   | -525   | 529         | 240    | -1,686     | -765   |
| 360° mechanical swing lock  | 140                                      | 66     | 23          | 10     | 117        | 53     |
| 4,000 lb (1.8t) counterweight bottom tray on carrier  | 4,000                                    | 1 814  | -1,733      | -786   | 5,733      | 2 600  |
| 6,000 lb (2.7t) counterweight on carrier  | 6,000                                    | 2 722  | -2,599      | -1 179 | 8,599      | 3 900  |
| 6,000 lb (2.7t) counterweight on carrier  | 6,000                                    | 2 722  | -2,599      | -1 179 | 8,599      | 3 900  |
| 12,000 lb (5.4t) counterweight on carrier   | 12,000                                   | 5 443  | -5,198      | -2 358 | 17,198     | 7 801  |
| 13,000 lb (5.9t) counterweight on carrier   | 13,000                                   | 5 897  | -5,632      | -2 555 | 18,632     | 8 451  |
| 2,000 lb (0.9t) counterweight top tray on upper   | 2,000                                    | 907    | -806        | -366   | 2,806      | 1 273  |
| 6,000 lb (2.7t) counterweight on rear carrier   | 6,000                                    | 2 722  | -2,617      | -1 187 | 8,617      | 3 909  |
| Floodlight to the front of boom base section  | 7  | 3      | 11          | 5      | -4         | -2     |
| Fly mounting brackets to boom base section for fly options  | 290                                      | 132    | 309         | 140    | -19        | -9     |
| 31—55 ft (9.45—16.76m) offsettable, two—piece (bi—fold) lattice fly — stowed                            | 2,734                                    | 1 240  | 2,820       | 1 279  | -86        | -39    |
| 10—31—55 ft (3.05—9.45—16.76m) offsettable, three—piece (bi—fold) lattice fly — stowed                  | 3,331                                    | 1 511  | 3,684       | 1 671  | -353       | -160   |
| 10—31—55 ft (3.05—9.45—16.76m) hydraulically offsettable, three—piece (bi—fold) lattice fly — stowed    | 3,804                                    | 1 725  | 4,460       | 2 023  | -656       | -298   |
| Additional components for hydraulically offsettable fly   | 469                                      | 213    | 607         | 275    | -138       | -63    |
| Auxiliary lifting sheave  | 120                                      | 54     | 223         | 116    | -103       | -61    |
| 35 ton (31.8mt) 1—sheave hook block at front bumper   | 1,100                                    | 499    | 1,795       | 814    | -695       | -315   |
| 50 ton (45.4mt) 4—sheave hook block at front bumper   | 1,200                                    | 544    | 1,958       | 888    | -758       | -344   |
| 80 ton (72.6mt) 5—sheave hook block at front bumper   | 1,411                                    | 640    | 2,302       | 1 044  | -891       | -404   |
| 100 ton (90.7mt) 6—sheave hook block at front bumper  | 1,750                                    | 794    | 2,855       | 1 295  | -1,105     | -501   |
| 140 ton (127.0mt) 7—sheave hook block at front bumper   | 2,394                                    | 1 086  | 3,906       | 1 772  | -1,512     | -686   |
| 12 ton (10.9mt) hook ball at front bumper   | 722                                      | 327    | 1,178       | 534    | -456       | -207   |

| Counterweight Load Transfer                                 | Front Axles |       | Rear Axles |        |
|---|-------------|-------|------------|--------|
|   | lb          | kg    | lb         | kg     |
| Transfer 4,000 lb (1.8t) counterweight tray to carrier deck | 4,664       | 2 116 | -4,664     | -2 116 |
| Transfer 6,000 lb (2.7t) counterweight to carrier deck      | 6,996       | 3 173 | -6,996     | -3 173 |
| Transfer 6,000 lb (2.7t) counterweight to carrier deck      | 6,996       | 3 173 | -6,996     | -3 173 |
| Transfer 12,000 lb (5.4t) counterweight to carrier deck     | 13,992      | 6 347 | -13,992    | -6 347 |
| Transfer 13,000 lb (5.9t) counterweight to carrier deck     | 15,158      | 6 876 | -15,158    | -6 876 |

| Axle  | Maximum Load @ 65 mph (105km/h)                                    |
|-------|--|
| Front | 49,200 lb (22 317kg) — aluminum disc wheels with 445/65R22.5 tires |
| Rear  | 74,184 lb (33 650kg) — aluminum disc wheels with 12R24.5 tires     |

(<sup>1</sup>) Adjust gross vehicle weight and axle loading according to component weight. All weights are ±3%.

# Axle Loads with 2–Axle or 3–Axle Boom Dolly

| Base crane with full tank of fuel and 2,000 lb (0.9t) counterweight                                     | Gross Vehicle Weight <sup>(1)</sup> |        | Front Axles |        | Rear Axles |        | Dolly Axles |       |
|---|-------------------------------------|--------|-------------|--------|------------|--------|-------------|-------|
|   | lb                                  | kg     | lb          | kg     | lb         | kg     | lb          | kg    |
|   | 109,904                             | 49 852 | 38,062      | 17 265 | 51,062     | 23 161 | 20,780      | 9 426 |
| Nelson 2–axle boom dolly <sup>(2)</sup>   | 6,000                               | 2 722  | 0           | 0      | 0          | 0      | 6,000       | 2 722 |
| Nelson 3–axle boom dolly <sup>(2)</sup>   | 9,000                               | 4 082  | 0           | 0      | 0          | 0      | 9,000       | 4 082 |
| Driver in carrier cab   | 250                                 | 113    | 311         | 141    | -61        | -28    | 0           | 0     |
| Rear pintle hook  | 44                                  | 20     | -23         | -10    | 67         | 30     | 0           | 0     |
| Pneumatic and electrical connectors for trailer or boom dolly   | 15                                  | 7      | 1           | -1     | 13         | 6      | 0           | 0     |
| Ether injection   | 6                                   | 3      | 9           | 4      | -2         | 1      | 0           | 0     |
| Remove 2,000 lb (0.9t) of ctwt – for one winch configuration only                                       | -2,038                              | -924   | -1,664      | -755   | -374       | -170   | 0           | 0     |
| Hoist drum follower – main  | 101                                 | 46     | 73          | 33     | 28         | 13     | 0           | 0     |
| Auxiliary winch with 675 ft (205.7m) of 7/8" (22mm) wire rope   | 1,213                               | 550    | 939         | 426    | 274        | 124    | 0           | 0     |
| Remove auxiliary winch with 675 ft (205.7m) of 7/8" (22mm) wire rope – for two winch configuration only | -3,019                              | -1 369 | -2,450      | -1 111 | -569       | -258   | 0           | 0     |
| Hoist drum follower – auxiliary   | 101                                 | 46     | 87          | 40     | 14         | 6      | 0           | 0     |
| Substitute 675 ft (205.7m) of rope with 900 ft (274.3m) of rope – auxiliary                             | 378                                 | 171    | 286         | 130    | 92         | 42     | 0           | 0     |
| Remove 900 ft (274.3m) of rope from front (main) winch  | -1,535                              | -696   | -969        | -440   | -566       | -257   | 0           | 0     |
| Remove 675 ft (205.7m) of rope from rear (auxiliary) winch  | -1,157                              | -525   | -876        | -397   | -281       | -127   | 0           | 0     |
| 360° mechanical swing lock  | 140                                 | 64     | 19          | 9      | 121        | 55     | 0           | 0     |
| 4,000 lb (1.8t) counterweight bottom tray on carrier  | 4,000                               | 1 814  | 2,931       | 1 330  | 1,069      | 485    | 0           | 0     |
| 6,000 lb (2.7t) counterweight on carrier  | 6,000                               | 2 722  | 4,397       | 1 994  | 1,603      | 727    | 0           | 0     |
| 6,000 lb (2.7t) counterweight on carrier  | 6,000                               | 2 722  | 4,397       | 1 994  | 1,603      | 727    | 0           | 0     |
| 12,000 lb (5.4t) counterweight on carrier   | 12,000                              | 5 443  | 8,794       | 3 989  | 3,206      | 1 454  | 0           | 0     |
| 13,000 lb (5.9t) counterweight on carrier   | 13,000                              | 5 897  | 9,526       | 4 321  | 3,474      | 1 576  | 0           | 0     |
| 2,000 lb (0.9t) counterweight top tray on upper   | 2,000                               | 907    | 1,405       | 637    | 595        | 270    | 0           | 0     |
| 6,000 lb (2.7t) counterweight on rear carrier   | 6,000                               | 2 722  | -2,617      | -1 187 | 8,617      | 3 909  | 0           | 0     |
| Floodlight to the front of boom base section  | 7                                   | 3      | -1          | -1     | -1         | -1     | 8           | 4     |
| Fly mounting brackets to boom base section for fly options  | 290                                 | 132    | 26          | 12     | 20         | 9      | 244         | 111   |
| 31–55 ft (9.45–16.76m) offsettable, two–piece (bi–fold) lattice fly – stowed                            | 2,734                               | 1 240  | 279         | 127    | 215        | 98     | 2,241       | 1 017 |
| 10–31–55 ft (3.05–9.45–16.76m) offsettable, three–piece (bi–fold) lattice fly – stowed                  | 3,331                               | 1 511  | 251         | 114    | 193        | 88     | 2,886       | 1 309 |
| 10–31–55 ft (3.05–9.45–16.76m) hydraulically offsettable, three–piece (bi–fold) lattice fly – stowed    | 3,804                               | 1 725  | 197         | 89     | 151        | 68     | 3,456       | 1 568 |
| Additional components for hydraulically offsettable fly   | 469                                 | 213    | 4           | 2      | 3          | 2      | 462         | 210   |
| Auxiliary lifting sheave  | 120                                 | 54     | -23         | -10    | -18        | -8     | 161         | 73    |
| 35 ton (31.8mt) 1–sheave hook block at boom head  | 1,100                               | 499    | -185        | -84    | -142       | -64    | 1,427       | 647   |
| 50 ton (45.4mt) 4–sheave hook block at boom head  | 1,200                               | 544    | -201        | -91    | -155       | -70    | 1,556       | 706   |
| 80 ton (72.6mt) 5–sheave hook block at boom head  | 1,411                               | 640    | -237        | -108   | -182       | -83    | 1,830       | 830   |
| 100 ton (90.7mt) 6–sheave hook block at boom head   | 1,750                               | 794    | -294        | -133   | -226       | -103   | 2,270       | 1 030 |
| 140 ton (127.0mt) 7–sheave hook block at boom head  | 2,394                               | 1 086  | -402        | -182   | -309       | -140   | 3,105       | 1 408 |
| 12 ton (10.9mt) hook ball at boom head  | 722                                 | 327    | -121        | -55    | -93        | -42    | 936         | 425   |

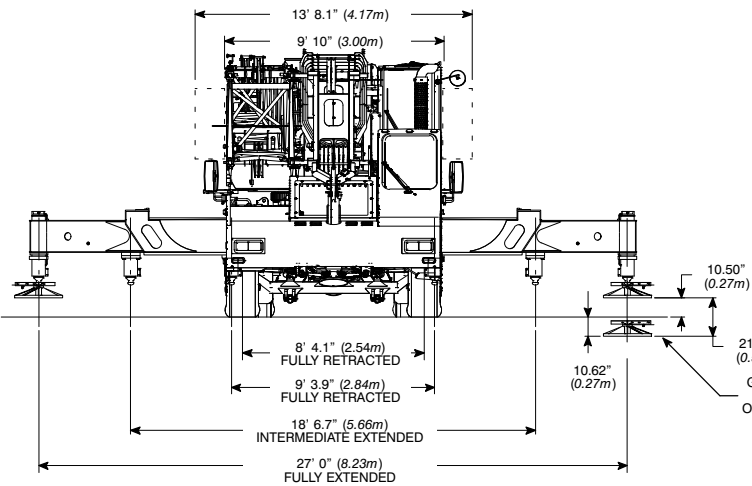
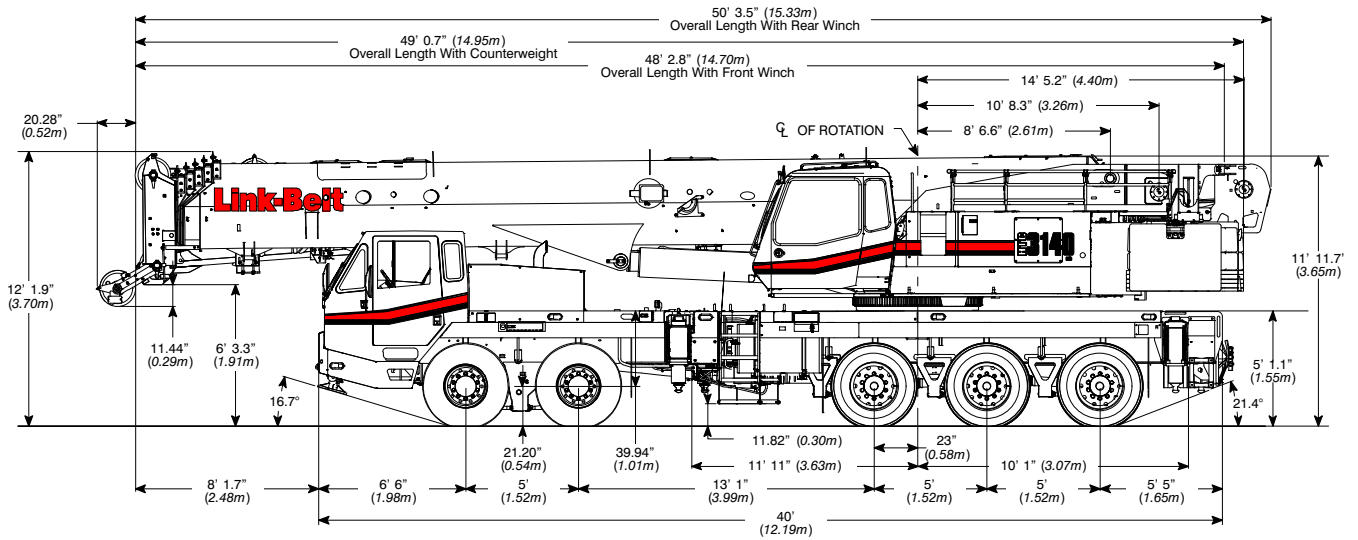
| Counterweight Load Transfer                                   | Front Axles |        | Rear Axles |        | Dolly Axles |       |
|---|-------------|--------|------------|--------|-------------|-------|
|   | lb          | kg     | lb         | kg     | lb          | kg    |
| Transfer 4,000 lb (1.8t) counterweight tray to boom dolly     | -2,931      | -1 330 | -1,069     | -485   | 4,000       | 1 814 |
| Transfer 6,000 lb (2.7t) counterweight to boom dolly          | -4,397      | -1 994 | -1,603     | 727    | 6,000       | 2 722 |
| Transfer 6,000 lb (2.7t) counterweight to boom dolly          | -4,397      | -1 994 | -1,603     | 727    | 6,000       | 2 722 |
| Transfer 12,000 lb (5.4t) counterweight to boom dolly         | -8,794      | -3 989 | -3,206     | -1 454 | 12,000      | 5 443 |
| Transfer 13,000 lb (5.9t) counterweight to boom dolly         | -9,526      | -4 321 | -3,474     | -1 576 | 13,000      | 5 897 |
| Transfer 2,000 lb (0.9t) counterweight top tray to boom dolly | -1,405      | -637   | -595       | -270   | 2,000       | 907   |

| Axle  | Maximum Load @ 65 mph (105km/h)                                    |
|-------|--|
| Front | 49,200 lb (22 317kg) – aluminum disc wheels with 445/65R22.5 tires |
| Rear  | 74,184 lb (33 650kg) – aluminum disc wheels with 12R24.5 tires     |

<sup>(1)</sup> Adjust gross vehicle weight and axle loading according to component weight. All weights are ±3%.

<sup>(2)</sup> Weights may vary.

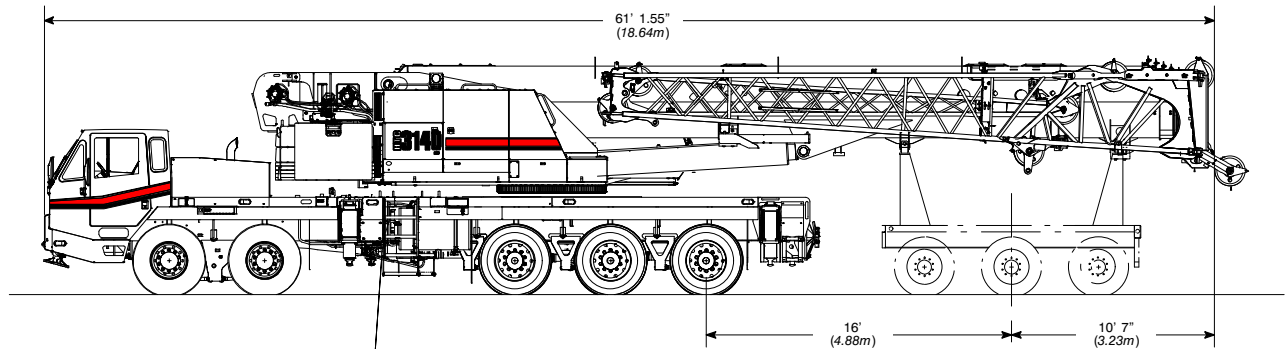
# General Dimensions



| Turning Radius                    | English  | Metric |
|-----------------------------------|----------|--------|
| Wall to wall over carrier         | 45' 4.2" | 13.82m |
| Wall to wall over boom            | 49' 4"   | 15.04m |
| Wall to wall over boom attachment | 50' 6.3" | 15.40m |
| Curb to curb                      | 41' 7.4" | 12.68m |
| Centerline of tire                | 40' 9.9" | 12.44m |

| Tail Swing            | English    | Metric |
|-----------------------|------------|--------|
| With two winches      | 15' 8.6"   | 4.79m  |
| With counterweight    | 14' 11.13" | 4.55m  |
| Without counterweight | 13' 8.3"   | 4.17m  |

| Overall Width                              | English  | Metric |
|--|----------|--------|
| With up to 45,000 lb (20.4t) counterweight | 9' 10"   | 3.00m  |
| With 60,000 lb (27.2t) counterweight       | 13' 8.1" | 4.17m  |

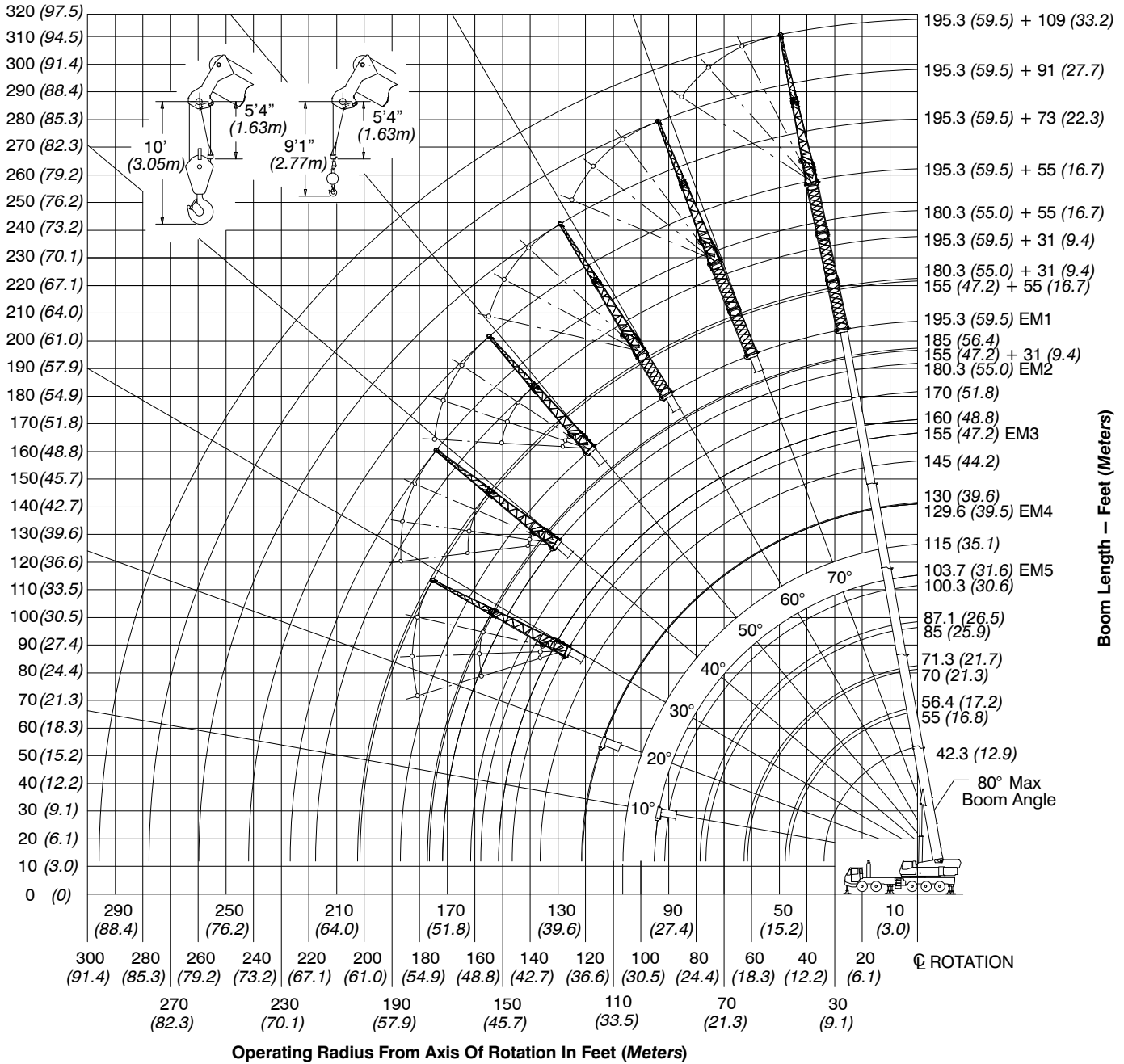


Not To Scale

# Working Range Diagram

Height Above Ground — Feet (Meters)

Boom + Fly Length — Feet (Meters)





# Boom Extend Modes

| Boom Length |      | Telescope Length |      |      |      |      |
|-------------|------|------------------|------|------|------|------|
| ft          | m    | T5               | T4   | T3   | T2   | T1   |
| 42.3        | 12.9 |                  |      |      |      |      |
| 55          | 16.8 | 44%              |      |      |      |      |
| 70          | 21.3 | 96%              |      |      |      |      |
| 85          | 25.9 | 100%             | 46%  |      |      |      |
| 100         | 30.5 | 100%             | 97%  |      |      |      |
| 115         | 35.1 | 100%             | 100% | 46%  |      |      |
| 130         | 39.6 | 100%             | 100% | 95%  |      |      |
| 145         | 44.2 | 100%             | 100% | 100% | 43%  |      |
| 160         | 48.8 | 100%             | 100% | 100% | 90%  |      |
| 175         | 53.3 | 100%             | 100% | 100% | 100% | 37%  |
| 185         | 56.4 | 100%             | 100% | 100% | 100% | 68%  |
| 195.3       | 59.5 | 100%             | 100% | 100% | 100% | 100% |

| Boom Length |      | Telescope Length |     |     |     |     |
|-------------|------|------------------|-----|-----|-----|-----|
| ft          | m    | T5               | T4  | T3  | T2  | T1  |
| 42.3        | 12.9 |                  |     |     |     |     |
| 55          | 16.8 | 90%              | 6%  |     |     |     |
| 70          | 21.3 | 90%              | 57% |     |     |     |
| 85          | 25.9 | 90%              | 90% | 17% |     |     |
| 100         | 30.5 | 90%              | 90% | 66% |     |     |
| 115         | 35.1 | 90%              | 90% | 90% | 24% |     |
| 130         | 39.6 | 90%              | 90% | 90% | 71% |     |
| 145         | 44.2 | 90%              | 90% | 90% | 90% | 28% |
| 160         | 48.8 | 90%              | 90% | 90% | 90% | 59% |
| 170         | 51.8 | 90%              | 90% | 90% | 90% | 91% |
| 180.3       | 55.0 | 90%              | 90% | 90% | 90% |     |

| Boom Length |      | Telescope Length |     |     |      |     |
|-------------|------|------------------|-----|-----|------|-----|
| ft          | m    | T5               | T4  | T3  | T2   | T1  |
| 42.3        | 12.9 |                  |     |     |      |     |
| 55          | 16.8 | 44%              |     |     |      |     |
| 70          | 21.3 | 46%              | 47% | 1%  |      |     |
| 85          | 25.9 | 46%              | 47% | 50% |      |     |
| 100         | 30.5 | 46%              | 47% | 90% | 9%   |     |
| 115         | 35.1 | 46%              | 47% | 90% | 457% |     |
| 130         | 39.6 | 46%              | 47% | 90% | 90%  | 13% |
| 145         | 44.2 | 46%              | 47% | 90% | 90%  | 60% |
| 155         | 47.2 | 46%              | 47% | 90% | 90%  | 91% |

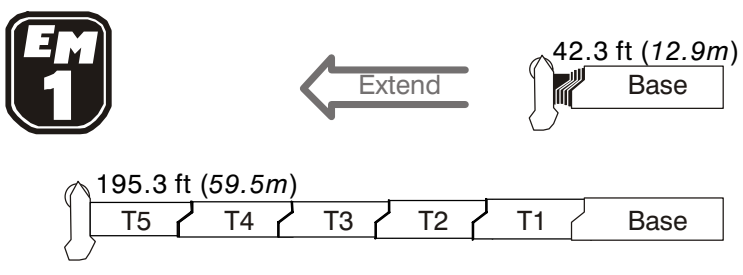
  

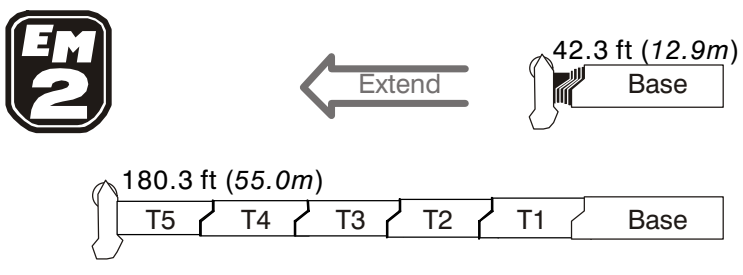
| Boom Length |      | Telescope Length |     |     |     |     |
|-------------|------|------------------|-----|-----|-----|-----|
| ft          | m    | T5               | T4  | T3  | T2  | T1  |
| 42.3        | 12.9 |                  |     |     |     |     |
| 55          | 16.8 | 44%              |     |     |     |     |
| 70          | 21.3 | 46%              | 47% | 1%  |     |     |
| 85          | 25.9 | 46%              | 47% | 49% | 2%  |     |
| 100         | 30.5 | 46%              | 47% | 49% | 49% |     |
| 115         | 35.1 | 46%              | 47% | 49% | 50% | 46% |
| 129.6       | 39.5 | 46%              | 47% | 49% | 50% | 91% |

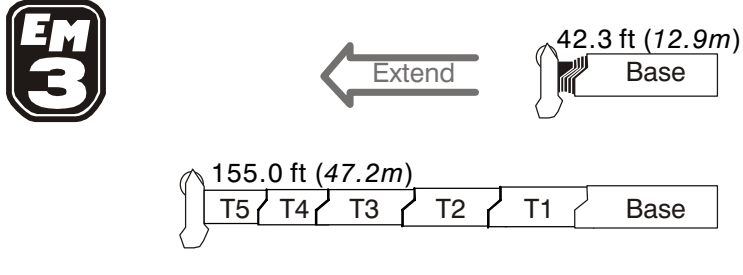
  

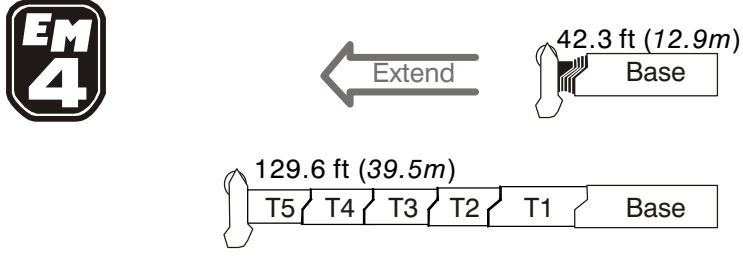
| Boom Length |      | Telescope Length |     |     |     |     |
|-------------|------|------------------|-----|-----|-----|-----|
| ft          | m    | T5               | T4  | T3  | T2  | T1  |
| 42.3        | 12.9 |                  |     |     |     |     |
| 56.4        | 17.2 | 0%               | 47% |     |     |     |
| 71.3        | 21.7 | 0%               | 47% | 49% |     |     |
| 87.1        | 26.5 | 0%               | 47% | 49% | 50% |     |
| 103.7       | 31.6 | 0%               | 47% | 49% | 50% | 51% |

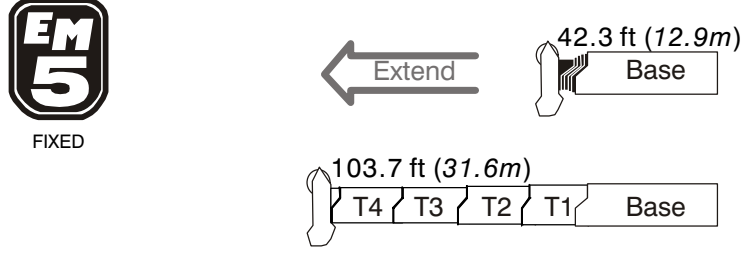
  











# Main Boom Lift Capacity Charts – Standard

| 20,000 lb Counterweight – Fully Extended Outriggers – 360° Rotation<br>(All Capacities Are Listed In Pounds) |                       |         |         |         |        |        |        |        |        |        |        |             |       |
|--|-----------------------|---------|---------|---------|--------|--------|--------|--------|--------|--------|--------|-------------|-------|
| Radius (ft)  | Main Boom Length (ft) |         |         |         |        |        |        |        |        |        |        | Radius (ft) |       |
|  | 42.3                  | 55      | 70      | 85      | 100    | 115    | 130    | 145    | 160    | 175    | 185    |             | 195.3 |
| 9  | 280,000*              |         |         |         |        |        |        |        |        |        |        |             | 9     |
| 10   | 264,900*              | 157,100 | 151,700 |         |        |        |        |        |        |        |        |             | 10    |
| 12   | 222,700*              | 157,100 | 144,800 |         |        |        |        |        |        |        |        |             | 12    |
| 15   | 177,800               | 157,100 | 137,400 | 110,100 |        |        |        |        |        |        |        |             | 15    |
| 20   | 131,100               | 134,600 | 118,300 | 106,500 | 80,700 | 61,300 |        |        |        |        |        |             | 20    |
| 25   | 102,200               | 105,700 | 103,700 | 93,500  | 77,100 | 61,300 | 49,400 |        |        |        |        |             | 25    |
| 30   | 78,200                | 83,300  | 84,600  | 83,200  | 67,900 | 61,300 | 47,400 | 41,000 | 35,500 |        |        |             | 30    |
| 35   |                       | 63,100  | 65,500  | 65,900  | 65,000 | 61,300 | 45,500 | 41,000 | 35,500 | 28,000 | 18,800 |             | 35    |
| 40   |                       | 49,400  | 51,900  | 52,100  | 51,500 | 50,200 | 40,800 | 40,300 | 35,500 | 28,000 | 18,800 | 17,000      | 40    |
| 45   |                       | 39,600  | 43,100  | 42,500  | 41,900 | 40,500 | 36,800 | 36,800 | 33,000 | 28,000 | 18,800 | 17,000      | 45    |
| 50   |                       |         | 35,700  | 36,500  | 35,200 | 34,400 | 32,500 | 33,200 | 30,000 | 28,000 | 18,800 | 17,000      | 50    |
| 55   |                       |         | 30,100  | 31,300  | 30,700 | 29,200 | 28,600 | 27,700 | 27,200 | 27,900 | 18,800 | 17,000      | 55    |
| 60   |                       |         | 25,600  | 26,900  | 27,200 | 26,500 | 25,900 | 25,000 | 24,800 | 24,800 | 18,800 | 17,000      | 60    |
| 65   |                       |         |         | 23,200  | 24,000 | 23,800 | 23,100 | 23,200 | 21,800 | 21,200 | 18,800 | 17,000      | 65    |
| 70   |                       |         |         | 20,200  | 21,000 | 20,900 | 20,500 | 20,200 | 19,700 | 18,900 | 18,400 | 17,000      | 70    |
| 75   |                       |         |         | 17,700  | 18,500 | 18,400 | 18,300 | 17,700 | 17,300 | 16,700 | 16,200 | 15,800      | 75    |
| 80   |                       |         |         |         | 16,400 | 16,500 | 16,400 | 15,900 | 15,400 | 14,600 | 14,200 | 13,700      | 80    |
| 85   |                       |         |         |         | 14,600 | 14,600 | 14,600 | 14,100 | 13,600 | 12,900 | 12,400 | 11,900      | 85    |
| 90   |                       |         |         |         | 13,000 | 13,000 | 13,000 | 12,500 | 12,000 | 11,300 | 10,800 | 10,400      | 90    |
| 95   |                       |         |         |         |        | 11,600 | 11,600 | 11,100 | 10,700 | 10,000 | 9,500  | 9,000       | 95    |
| 100  |                       |         |         |         |        | 10,400 | 10,300 | 9,900  | 9,500  | 8,800  | 8,300  | 7,900       | 100   |
| 105  |                       |         |         |         |        | 9,300  | 9,200  | 8,800  | 8,400  | 7,700  | 7,200  | 6,800       | 105   |
| 110  |                       |         |         |         |        |        | 8,200  | 7,800  | 7,400  | 6,700  | 6,300  | 5,800       | 110   |
| 115  |                       |         |         |         |        |        | 7,400  | 6,900  | 6,600  | 5,900  | 5,400  | 5,000       | 115   |
| 120  |                       |         |         |         |        |        | 6,600  | 6,100  | 5,800  | 5,100  | 4,600  | 4,200       | 120   |
| 125  |                       |         |         |         |        |        |        | 5,400  | 5,000  | 4,400  | 3,900  | 3,500       | 125   |
| 130  |                       |         |         |         |        |        |        | 4,700  | 4,400  | 3,700  | 3,300  | 2,900       | 130   |
| 135  |                       |         |         |         |        |        |        | 4,200  | 3,700  | 3,100  | 2,700  | 2,300       | 135   |
| 140  |                       |         |         |         |        |        |        |        | 3,200  | 2,500  | 2,100  | 1,700       | 140   |
| 145  |                       |         |         |         |        |        |        |        | 2,700  | 2,000  | 1,600  | 1,200       | 145   |
| 150  |                       |         |         |         |        |        |        |        | 2,200  | 1,600  |        |             | 150   |

\* Special Conditions Or Wire Rope Required

This information is not for crane operation. Operator must refer to the in-cab information for crane operation. Rated lifting capacities shown on fully extended outriggers do not exceed 85% of the tipping loads and on tires do not exceed 75% of the tipping loads.

# Main Boom Lift Capacity Charts – Optional

| 60,000 lb Counterweight – Fully Extended Outriggers – 360° Rotation<br>(All Capacities Are Listed In Pounds) |                       |         |         |         |        |        |        |        |        |        |        |                |       |
|--|-----------------------|---------|---------|---------|--------|--------|--------|--------|--------|--------|--------|----------------|-------|
| Radius<br>(ft)   | Main Boom Length (ft) |         |         |         |        |        |        |        |        |        |        | Radius<br>(ft) |       |
|  | 42.3                  | 55      | 70      | 85      | 100    | 115    | 130    | 145    | 160    | 175    | 185    |                | 195.3 |
| 9  | 280,000*              |         |         |         |        |        |        |        |        |        |        |                | 9     |
| 10   | 264,900*              | 157,100 | 151,700 |         |        |        |        |        |        |        |        |                | 10    |
| 12   | 240,000*              | 157,100 | 144,800 |         |        |        |        |        |        |        |        |                | 12    |
| 15   | 204,500               | 157,100 | 137,400 | 110,100 |        |        |        |        |        |        |        |                | 15    |
| 20   | 151,600               | 152,200 | 118,300 | 106,500 | 80,700 | 61,300 |        |        |        |        |        |                | 20    |
| 25   | 118,800               | 122,200 | 103,700 | 93,500  | 77,100 | 61,300 | 49,400 |        |        |        |        |                | 25    |
| 30   | 96,400                | 99,900  | 92,100  | 83,200  | 67,900 | 61,300 | 47,400 | 41,000 | 35,500 |        |        |                | 30    |
| 35   |                       | 83,800  | 82,900  | 74,700  | 65,000 | 61,300 | 45,500 | 41,000 | 35,500 | 28,000 | 18,800 |                | 35    |
| 40   |                       | 72,200  | 72,700  | 67,700  | 62,400 | 57,400 | 40,800 | 40,300 | 35,500 | 28,000 | 18,800 | 17,000         | 40    |
| 45   |                       | 62,600  | 64,600  | 61,900  | 57,000 | 52,000 | 36,800 | 36,800 | 33,000 | 28,000 | 18,800 | 17,000         | 45    |
| 50   |                       |         | 56,400  | 54,800  | 52,400 | 47,500 | 33,300 | 33,700 | 30,000 | 28,000 | 18,800 | 17,000         | 50    |
| 55   |                       |         | 48,500  | 49,000  | 48,400 | 43,500 | 30,300 | 31,000 | 27,300 | 27,900 | 18,800 | 17,000         | 55    |
| 60   |                       |         | 42,100  | 42,700  | 42,200 | 40,200 | 27,600 | 28,600 | 24,900 | 26,000 | 18,800 | 17,000         | 60    |
| 65   |                       |         |         | 37,500  | 37,100 | 36,000 | 25,400 | 26,400 | 23,100 | 24,200 | 18,800 | 17,000         | 65    |
| 70   |                       |         |         | 33,300  | 33,000 | 32,000 | 23,600 | 24,500 | 21,500 | 22,600 | 18,800 | 17,000         | 70    |
| 75   |                       |         |         | 29,800  | 29,400 | 28,500 | 22,000 | 22,800 | 20,100 | 21,100 | 18,800 | 17,000         | 75    |
| 80   |                       |         |         |         | 26,300 | 25,400 | 20,600 | 21,200 | 18,800 | 19,800 | 17,900 | 17,000         | 80    |
| 85   |                       |         |         |         | 23,700 | 22,800 | 19,300 | 19,800 | 17,700 | 18,600 | 16,600 | 15,800         | 85    |
| 90   |                       |         |         |         | 21,400 | 20,500 | 18,000 | 18,400 | 16,600 | 17,400 | 15,400 | 14,700         | 90    |
| 95   |                       |         |         |         |        | 18,500 | 16,900 | 17,100 | 15,600 | 16,300 | 14,400 | 13,600         | 95    |
| 100  |                       |         |         |         |        | 17,300 | 15,900 | 16,000 | 14,700 | 15,300 | 13,400 | 12,600         | 100   |
| 105  |                       |         |         |         |        | 16,300 | 15,000 | 14,900 | 13,800 | 14,400 | 12,400 | 11,700         | 105   |
| 110  |                       |         |         |         |        |        | 14,100 | 13,800 | 13,000 | 13,500 | 11,600 | 10,900         | 110   |
| 115  |                       |         |         |         |        |        | 13,400 | 12,500 | 12,300 | 12,800 | 10,800 | 10,100         | 115   |
| 120  |                       |         |         |         |        |        | 12,800 | 11,900 | 11,600 | 12,000 | 10,000 | 9,300          | 120   |
| 125  |                       |         |         |         |        |        |        | 11,300 | 11,000 | 11,300 | 9,400  | 8,700          | 125   |
| 130  |                       |         |         |         |        |        |        | 10,700 | 10,400 | 10,600 | 8,700  | 8,000          | 130   |
| 135  |                       |         |         |         |        |        |        | 10,100 | 9,900  | 9,700  | 8,100  | 7,400          | 135   |
| 140  |                       |         |         |         |        |        |        |        | 9,300  | 8,900  | 7,500  | 6,800          | 140   |
| 145  |                       |         |         |         |        |        |        |        | 8,600  | 8,400  | 7,000  | 6,300          | 145   |
| 150  |                       |         |         |         |        |        |        |        | 7,900  | 7,900  | 6,500  | 5,800          | 150   |
| 155  |                       |         |         |         |        |        |        |        |        | 7,200  | 6,000  | 5,300          | 155   |
| 160  |                       |         |         |         |        |        |        |        |        | 6,600  | 5,600  | 4,900          | 160   |
| 165  |                       |         |         |         |        |        |        |        |        | 6,100  | 5,100  | 4,500          | 165   |
| 170  |                       |         |         |         |        |        |        |        |        |        | 4,700  | 4,100          | 170   |
| 175  |                       |         |         |         |        |        |        |        |        |        | 4,400  | 3,700          | 175   |
| 180  |                       |         |         |         |        |        |        |        |        |        |        | 3,300          | 180   |
| 185  |                       |         |         |         |        |        |        |        |        |        |        | 3,000          | 185   |

\* Special Conditions Or Wire Rope Required

This information is not for crane operation. Operator must refer to the in-cab information for crane operation. Rated lifting capacities shown on fully extended outriggers do not exceed 85% of the tipping loads and on tires do not exceed 75% of the tipping loads.

# Manual Offset Fly Attachment Lift Capacity Charts – Optional

| 20,000 lb Counterweight – Fully Extended Outriggers – 360° Rotation<br>(All Capacities Are Listed In Pounds) |                       |        |        |        |        |        |        |        |        |        |        |        |        |        |        |             |     |
|--|-----------------------|--------|--------|--------|--------|--------|--------|--------|--------|--------|--------|--------|--------|--------|--------|-------------|-----|
| Main Boom + 10 ft Manual Offset Fly (2°, 15°, 30°, 45° Offsets)  |                       |        |        |        |        |        |        |        |        |        |        |        |        |        |        |             |     |
| Radius (ft)  | Main Boom Length (ft) |        |        |        |        |        |        |        |        |        |        |        |        |        |        | Radius (ft) |     |
|  | 42.3                  | 55.0   | 70.0   | 85.0   | 100.0  | 115.0  | 130.0  | 145.0  | 155.0  | 160.0  | 170.0  | 175.0  | 180.3  | 185.0  | 195.3  |             |     |
| 10   | 51,800                | 51,800 |        |        |        |        |        |        |        |        |        |        |        |        |        |             | 10  |
| 12   | 47,300                | 51,800 | 51,800 |        |        |        |        |        |        |        |        |        |        |        |        |             | 12  |
| 15   | 46,400                | 46,700 | 51,800 | 51,800 |        |        |        |        |        |        |        |        |        |        |        |             | 15  |
| 20   | 45,200                | 45,600 | 45,800 | 45,500 | 51100  |        |        |        |        |        |        |        |        |        |        |             | 20  |
| 25   | 44,500                | 44,800 | 45,000 | 44,800 | 43400  | 45,800 | 40,200 |        |        |        |        |        |        |        |        |             | 25  |
| 30   | 44,500                | 44,300 | 44,400 | 44,200 | 42900  | 41,900 | 40,200 | 36,100 | 28,600 | 24,100 |        |        | 15,300 |        |        |             | 30  |
| 35   | 44,500                | 44,200 | 44,000 | 43,800 | 41400  | 40,900 | 38,400 | 36,100 | 28,600 | 24,100 | 22,300 | 15,300 | 19,700 | 14,200 | 12,400 |             | 35  |
| 40   | 44,500                | 44,200 | 43,900 | 43,500 | 37600  | 37,100 | 34,900 | 36,000 | 28,600 | 24,100 | 22,300 | 15,300 | 19,700 | 14,200 | 12,400 |             | 40  |
| 45   |                       | 42,200 | 43,300 | 43,200 | 34500  | 34,100 | 32,000 | 33,300 | 28,600 | 24,100 | 22,300 | 15,300 | 19,700 | 14,200 | 12,400 |             | 45  |
| 50   |                       | 34,800 | 35,900 | 35,800 | 31900  | 31,300 | 29,400 | 30,800 | 28,400 | 24,100 | 22,300 | 15,300 | 19,700 | 14,200 | 12,400 |             | 50  |
| 55   |                       | 29,300 | 30,300 | 30,200 | 29500  | 28,800 | 27,000 | 27,700 | 25,800 | 24,100 | 22,300 | 15,300 | 19,700 | 14,200 | 12,400 |             | 55  |
| 60   |                       |        | 26,700 | 27,200 | 25600  | 25,000 | 24,300 | 23,300 | 22,800 | 22,700 | 22,300 | 15,300 | 19,700 | 14,200 | 12,400 |             | 60  |
| 65   |                       |        | 23,100 | 23,600 | 23400  | 22,300 | 21,600 | 21,000 | 19,200 | 21,000 | 20,900 | 15,300 | 19,700 | 14,200 | 12,400 |             | 65  |
| 70   |                       |        | 20,200 | 20,700 | 20700  | 20,700 | 20,000 | 19,600 | 16,600 | 18,600 | 18,000 | 15,300 | 17,400 | 14,200 | 12,400 |             | 70  |
| 75   |                       |        |        | 18,200 | 18,500 | 18,200 | 17,500 | 17,400 | 14,200 | 16,800 | 15,800 | 15,300 | 15,300 | 14,200 | 12,400 |             | 75  |
| 80   |                       |        |        | 16,200 | 16,500 | 16,300 | 16,100 | 15,500 | 12,100 | 15,000 | 13,700 | 14,200 | 13,200 | 13,700 | 12,400 |             | 80  |
| 85   |                       |        |        | 14,300 | 14,700 | 14,500 | 14,200 | 13,700 | 10,400 | 13,200 | 11,900 | 12,400 | 11,400 | 11,900 | 11,500 |             | 85  |
| 90   |                       |        |        |        | 13,100 | 12,900 | 12,700 | 12,100 | 8,800  | 11,600 | 10,400 | 10,900 | 9,900  | 10,400 | 9,900  |             | 90  |
| 95   |                       |        |        |        | 11,700 | 11,500 | 11,300 | 10,700 | 7,500  | 10,200 | 9,000  | 9,500  | 8,500  | 9,000  | 8,600  |             | 95  |
| 100  |                       |        |        |        | 10,500 | 10,300 | 10,100 | 9,500  | 6,300  | 9,000  | 7,800  | 8,300  | 7,300  | 7,800  | 7,400  |             | 100 |
| 105  |                       |        |        |        |        | 9,200  | 9,000  | 8,400  | 5,200  | 7,900  | 6,700  | 7,200  | 6,300  | 6,700  | 6,300  |             | 105 |
| 110  |                       |        |        |        |        | 8,200  | 8,000  | 7,500  | 4,300  | 7,000  | 5,800  | 6,200  | 5,300  | 5,800  | 5,300  |             | 110 |
| 115  |                       |        |        |        |        | 7,300  | 7,100  | 6,600  | 3,400  | 6,100  | 4,900  | 5,400  | 4,400  | 4,900  | 4,500  |             | 115 |
| 120  |                       |        |        |        |        |        | 6,300  | 5,800  | 2,700  | 5,300  | 4,100  | 4,600  | 3,700  | 4,100  | 3,700  |             | 120 |
| 125  |                       |        |        |        |        |        | 5,600  | 5,100  | 2,000  | 4,600  | 3,400  | 3,900  | 3,000  | 3,400  | 3,000  |             | 125 |
| 130  |                       |        |        |        |        |        | 5,000  | 4,400  |        | 3,900  | 2,800  | 3,200  | 2,300  | 2,800  | 2,300  |             | 130 |
| 135  |                       |        |        |        |        |        |        | 3,800  |        | 3,300  | 2,200  | 2,600  | 1,700  | 2,200  | 1,700  |             | 135 |
| 140  |                       |        |        |        |        |        |        | 3,200  |        | 2,800  | 1,600  | 2,100  |        | 1,600  |        |             | 140 |
| 145  |                       |        |        |        |        |        |        | 2,800  |        | 2,300  |        | 1,600  |        |        |        |             | 145 |
| 150  |                       |        |        |        |        |        |        |        |        | 1,800  |        |        |        |        |        |             | 150 |
| 155  |                       |        |        |        |        |        |        |        |        | 1,400  |        |        |        |        |        |             | 155 |

This information is not for crane operation. Operator must refer to the in-cab information for crane operation. Rated lifting capacities shown on fully extended outriggers do not exceed 85% of the tipping loads and on tires do not exceed 75% of the tipping loads.

| 60,000 lb Counterweight – Fully Extended Outriggers – 360° Rotation<br>(All Capacities Are Listed In Pounds) |                       |        |        |        |        |        |        |        |        |        |        |        |        |        |        |             |
|--|-----------------------|--------|--------|--------|--------|--------|--------|--------|--------|--------|--------|--------|--------|--------|--------|-------------|
| Main Boom + 10 ft Manual Offset Fly (2°, 15°, 30°, 45° Offsets)  |                       |        |        |        |        |        |        |        |        |        |        |        |        |        |        |             |
| Radius (ft)  | Main Boom Length (ft) |        |        |        |        |        |        |        |        |        |        |        |        |        |        | Radius (ft) |
|  | 42.3                  | 55.0   | 70.0   | 85.0   | 100.0  | 115.0  | 130.0  | 145.0  | 155.0  | 160.0  | 170.0  | 175.0  | 180.3  | 185.0  | 195.3  |             |
| 10   | 51,800                | 51,800 |        |        |        |        |        |        |        |        |        |        |        |        |        | 10          |
| 12   | 47,300                | 51,800 | 51,800 |        |        |        |        |        |        |        |        |        |        |        |        | 12          |
| 15   | 46,400                | 46,700 | 51,800 | 51,800 |        |        |        |        |        |        |        |        |        |        |        | 15          |
| 20   | 45,200                | 45,600 | 45,800 | 45,500 | 51,100 |        |        |        |        |        |        |        |        |        |        | 20          |
| 25   | 44,500                | 44,800 | 45,000 | 44,800 | 43,400 | 45,800 | 40,200 |        |        |        |        |        |        |        |        | 25          |
| 30   | 44,500                | 44,300 | 44,400 | 44,200 | 42,900 | 41,900 | 40,200 | 36,100 | 28,600 | 24,100 |        | 15,300 |        |        |        | 30          |
| 35   | 44,500                | 44,200 | 44,000 | 43,800 | 41,400 | 40,900 | 38,400 | 36,100 | 28,600 | 24,100 | 22,300 | 15,300 | 19,700 | 14,200 | 12,400 | 35          |
| 40   | 44,500                | 44,200 | 43,900 | 43,500 | 37,600 | 37,100 | 34,900 | 36,000 | 28,600 | 24,100 | 22,300 | 15,300 | 19,700 | 14,200 | 12,400 | 40          |
| 45   |                       | 44,200 | 43,900 | 43,300 | 34,500 | 34,100 | 32,000 | 33,300 | 28,600 | 24,100 | 22,300 | 15,300 | 19,700 | 14,200 | 12,400 | 45          |
| 50   |                       | 44,200 | 43,900 | 43,300 | 31,900 | 31,300 | 29,400 | 30,800 | 28,400 | 24,100 | 22,300 | 15,300 | 19,700 | 14,200 | 12,400 | 50          |
| 55   |                       | 42,400 | 43,900 | 43,300 | 29,500 | 28,800 | 27,000 | 28,500 | 25,800 | 24,100 | 22,300 | 15,300 | 19,700 | 14,200 | 12,400 | 55          |
| 60   |                       |        | 43,300 | 40,700 | 27,300 | 26,600 | 24,900 | 26,500 | 23,500 | 22,700 | 22,300 | 15,300 | 19,700 | 14,200 | 12,400 | 60          |
| 65   |                       |        | 38,200 | 38,100 | 25,400 | 24,700 | 23,100 | 24,500 | 21,500 | 21,000 | 21,800 | 15,300 | 19,700 | 14,200 | 12,400 | 65          |
| 70   |                       |        | 34,100 | 34,000 | 23,800 | 22,900 | 21,400 | 22,700 | 19,700 | 19,500 | 20,400 | 15,300 | 19,100 | 14,200 | 12,400 | 70          |
| 75   |                       |        |        | 30,400 | 22,300 | 21,400 | 19,900 | 21,100 | 18,100 | 18,200 | 19,000 | 15,300 | 16,800 | 14,200 | 12,400 | 75          |
| 80   |                       |        |        | 27,400 | 20,900 | 20,000 | 18,600 | 19,600 | 16,800 | 17,100 | 17,800 | 15,300 | 16,400 | 14,200 | 12,400 | 80          |
| 85   |                       |        |        | 24,800 | 19,700 | 18,700 | 17,300 | 18,200 | 15,500 | 16,000 | 16,900 | 15,300 | 15,200 | 14,200 | 12,400 | 85          |
| 90   |                       |        |        |        | 18,600 | 17,500 | 16,400 | 17,200 | 14,200 | 15,000 | 15,800 | 14,300 | 14,000 | 14,200 | 12,400 | 90          |
| 95   |                       |        |        |        | 17,600 | 16,700 | 15,400 | 16,100 | 13,100 | 14,000 | 14,900 | 13,300 | 12,900 | 13,200 | 12,400 | 95          |
| 100  |                       |        |        |        | 16,900 | 15,700 | 14,400 | 15,000 | 12,100 | 13,200 | 14,000 | 12,500 | 12,000 | 12,200 | 11,500 | 100         |
| 105  |                       |        |        |        |        | 14,800 | 13,500 | 14,000 | 11,100 | 12,300 | 13,100 | 11,700 | 11,100 | 11,300 | 10,600 | 105         |
| 110  |                       |        |        |        |        | 13,900 | 12,700 | 13,000 | 10,200 | 11,600 | 12,300 | 11,000 | 10,200 | 10,500 | 9,800  | 110         |
| 115  |                       |        |        |        |        | 13,200 | 12,000 | 12,100 | 9,400  | 10,900 | 11,500 | 10,300 | 9,400  | 9,700  | 9,000  | 115         |
| 120  |                       |        |        |        |        |        | 11,300 | 11,200 | 8,600  | 10,300 | 10,800 | 9,700  | 8,700  | 9,000  | 8,300  | 120         |
| 125  |                       |        |        |        |        |        | 10,700 | 10,200 | 7,900  | 9,700  | 10,100 | 9,100  | 8,000  | 8,300  | 7,600  | 125         |
| 130  |                       |        |        |        |        |        | 10,200 | 9,400  | 7,200  | 9,100  | 9,500  | 8,500  | 7,400  | 7,700  | 7,000  | 130         |
| 135  |                       |        |        |        |        |        |        | 8,900  | 6,600  | 8,600  | 8,900  | 8,000  | 6,800  | 7,100  | 6,400  | 135         |
| 140  |                       |        |        |        |        |        |        | 8,400  | 6,000  | 8,100  | 8,400  | 7,600  | 6,200  | 6,600  | 5,900  | 140         |
| 145  |                       |        |        |        |        |        |        | 8,000  | 5,500  | 7,600  | 7,700  | 7,100  | 5,700  | 6,000  | 5,400  | 145         |
| 150  |                       |        |        |        |        |        |        |        | 5,000  | 7,200  | 7,000  | 6,700  | 5,200  | 5,600  | 4,900  | 150         |
| 155  |                       |        |        |        |        |        |        |        | 4,500  | 6,800  | 6,400  | 6,300  | 4,700  | 5,100  | 4,400  | 155         |
| 160  |                       |        |        |        |        |        |        |        |        | 6,300  | 5,800  | 5,900  | 4,300  | 4,700  | 4,000  | 160         |
| 165  |                       |        |        |        |        |        |        |        |        |        | 5,200  | 5,600  | 3,900  | 4,200  | 3,600  | 165         |
| 170  |                       |        |        |        |        |        |        |        |        |        | 4,700  | 5,100  | 3,500  | 3,900  | 3,200  | 170         |
| 175  |                       |        |        |        |        |        |        |        |        |        |        |        | 3,100  | 3,500  | 2,800  | 175         |
| 180  |                       |        |        |        |        |        |        |        |        |        |        |        |        | 3,100  | 2,500  | 180         |
| 185  |                       |        |        |        |        |        |        |        |        |        |        |        |        |        | 2,100  | 185         |
| 190  |                       |        |        |        |        |        |        |        |        |        |        |        |        |        | 1,800  | 190         |

This information is not for crane operation. Operator must refer to the in-cab information for crane operation. Rated lifting capacities shown on fully extended outriggers do not exceed 85% of the tipping loads and on tires do not exceed 75% of the tipping loads.

| 20,000 lb Counterweight – Fully Extended Outriggers – 360° Rotation<br>(All Capacities Are Listed In Pounds) |                         |        |        |        |                         |        |       |       |                |
|--|-------------------------|--------|--------|--------|-------------------------|--------|-------|-------|----------------|
| 155.0 ft Main Boom Length  |                         |        |        |        |                         |        |       |       |                |
| Radius<br>(ft)   | 31 ft Manual Offset Fly |        |        |        | 55 ft Manual Offset Fly |        |       |       | Radius<br>(ft) |
|  | 2°                      | 15°    | 30°    | 45°    | 2°                      | 15°    | 30°   | 45°   |                |
| 40   | 18,900                  |        |        |        |                         |        |       |       | 40             |
| 45   | 18,900                  | 17,700 |        |        | 13,100                  |        |       |       | 45             |
| 50   | 18,900                  | 17,400 |        |        | 12,800                  |        |       |       | 50             |
| 55   | 18,900                  | 17,100 | 15,200 |        | 12,500                  |        |       |       | 55             |
| 60   | 18,800                  | 16,800 | 15,000 | 13,800 | 12,200                  | 10,500 |       |       | 60             |
| 65   | 18,500                  | 16,500 | 14,800 | 13,700 | 11,900                  | 10,300 |       |       | 65             |
| 70   | 17,200                  | 16,200 | 14,600 | 13,600 | 11,600                  | 10,000 | 8,700 |       | 70             |
| 75   | 15,000                  | 16,000 | 14,400 | 13,500 | 11,400                  | 9,800  | 8,500 |       | 75             |
| 80   | 13,000                  | 14,000 | 14,200 | 13,400 | 11,100                  | 9,600  | 8,400 | 7,600 | 80             |
| 85   | 11,200                  | 12,100 | 13,100 | 13,300 | 10,800                  | 9,400  | 8,300 | 7,500 | 85             |
| 90   | 9,600                   | 10,500 | 11,400 | 12,000 | 10,600                  | 9,200  | 8,100 | 7,500 | 90             |
| 95   | 8,300                   | 9,100  | 9,900  | 10,500 | 9,400                   | 9,000  | 8,000 | 7,400 | 95             |
| 100  | 7,100                   | 7,800  | 8,500  | 9,100  | 8,200                   | 8,900  | 7,900 | 7,300 | 100            |
| 105  | 6,000                   | 6,700  | 7,300  | 7,800  | 7,100                   | 8,300  | 7,800 | 7,300 | 105            |
| 110  | 5,000                   | 5,700  | 6,300  | 6,700  | 6,100                   | 7,200  | 7,700 | 7,200 | 110            |
| 115  | 4,200                   | 4,800  | 5,300  | 5,600  | 5,300                   | 6,300  | 7,300 | 7,200 | 115            |
| 120  | 3,400                   | 3,900  | 4,400  | 4,700  | 4,500                   | 5,400  | 6,400 | 7,100 | 120            |
| 125  | 2,700                   | 3,200  | 3,600  | 3,900  | 3,700                   | 4,600  | 5,500 | 6,100 | 125            |
| 130  | 2,000                   | 2,500  | 2,900  | 3,100  | 3,100                   | 3,900  | 4,700 | 5,300 | 130            |
| 135  | 1,500                   | 1,900  | 2,200  | 2,400  | 2,500                   | 3,200  | 4,000 | 4,500 | 135            |
| 140  |                         | 1,300  | 1,600  | 1,700  | 1,900                   | 2,600  | 3,300 | 3,700 | 140            |
| 145  |                         |        |        |        | 1,400                   | 2,000  | 2,700 | 3,000 | 145            |
| 150  |                         |        |        |        |                         | 1,500  | 2,100 | 2,400 | 150            |
| 155  |                         |        |        |        |                         |        | 1,500 | 1,800 | 155            |
| 160  |                         |        |        |        |                         |        |       | 1,200 | 160            |

This information is not for crane operation. Operator must refer to the in-cab information for crane operation. Rated lifting capacities shown on fully extended outriggers do not exceed 85% of the tipping loads and on tires do not exceed 75% of the tipping loads.

| 60,000 lb Counterweight – Fully Extended Outriggers – 360° Rotation<br>(All Capacities Are Listed In Pounds) |                         |        |        |        |                         |        |       |       |                |
|--|-------------------------|--------|--------|--------|-------------------------|--------|-------|-------|----------------|
| 155.0 ft Main Boom Length  |                         |        |        |        |                         |        |       |       |                |
| Radius<br>(ft)   | 31 ft Manual Offset Fly |        |        |        | 55 ft Manual Offset Fly |        |       |       | Radius<br>(ft) |
|  | 2°                      | 15°    | 30°    | 45°    | 2°                      | 15°    | 30°   | 45°   |                |
| 40   | 18,900                  |        |        |        |                         |        |       |       | 40             |
| 45   | 18,900                  | 17,700 |        |        | 13,100                  |        |       |       | 45             |
| 50   | 18,900                  | 17,400 |        |        | 12,800                  |        |       |       | 50             |
| 55   | 18,900                  | 17,100 | 15,200 |        | 12,500                  |        |       |       | 55             |
| 60   | 18,800                  | 16,800 | 15,000 | 13,800 | 12,200                  | 10,500 |       |       | 60             |
| 65   | 18,500                  | 16,500 | 14,800 | 13,700 | 11,900                  | 10,300 |       |       | 65             |
| 70   | 18,100                  | 16,200 | 14,600 | 13,600 | 11,600                  | 10,000 | 8,700 |       | 70             |
| 75   | 17,300                  | 16,000 | 14,400 | 13,500 | 11,400                  | 9,800  | 8,500 |       | 75             |
| 80   | 16,000                  | 15,700 | 14,200 | 13,400 | 11,100                  | 9,600  | 8,400 | 7,600 | 80             |
| 85   | 14,800                  | 15,200 | 14,100 | 13,300 | 10,800                  | 9,400  | 8,300 | 7,500 | 85             |
| 90   | 13,700                  | 14,100 | 13,900 | 13,200 | 10,600                  | 9,200  | 8,100 | 7,500 | 90             |
| 95   | 12,700                  | 13,100 | 13,400 | 13,200 | 10,300                  | 9,000  | 8,000 | 7,400 | 95             |
| 100  | 11,700                  | 12,100 | 12,500 | 12,800 | 10,100                  | 8,900  | 7,900 | 7,300 | 100            |
| 105  | 10,900                  | 11,200 | 11,600 | 11,800 | 9,800                   | 8,700  | 7,800 | 7,300 | 105            |
| 110  | 10,100                  | 10,400 | 10,700 | 11,000 | 9,600                   | 8,500  | 7,700 | 7,200 | 110            |
| 115  | 9,300                   | 9,600  | 9,900  | 10,200 | 9,200                   | 8,400  | 7,600 | 7,200 | 115            |
| 120  | 8,600                   | 8,900  | 9,200  | 9,400  | 8,500                   | 8,200  | 7,500 | 7,200 | 120            |
| 125  | 8,000                   | 8,200  | 8,500  | 8,700  | 7,900                   | 8,100  | 7,500 | 7,100 | 125            |
| 130  | 7,400                   | 7,600  | 7,900  | 8,000  | 7,300                   | 7,700  | 7,400 | 7,100 | 130            |
| 135  | 6,800                   | 7,000  | 7,200  | 7,400  | 6,700                   | 7,100  | 7,300 | 7,000 | 135            |
| 140  | 6,200                   | 6,500  | 6,700  | 6,800  | 6,200                   | 6,600  | 7,000 | 7,000 | 140            |
| 145  | 5,700                   | 5,900  | 6,100  |        | 5,700                   | 6,100  | 6,400 | 6,700 | 145            |
| 150  | 5,300                   | 5,500  | 5,600  |        | 5,300                   | 5,600  | 5,900 | 6,100 | 150            |
| 155  | 4,800                   | 5,000  | 5,100  |        | 4,900                   | 5,200  | 5,500 | 5,600 | 155            |
| 160  | 4,400                   | 4,600  | 4,700  |        | 4,400                   | 4,700  | 5,000 | 5,100 | 160            |
| 165  | 4,000                   | 4,200  |        |        | 4,100                   | 4,300  | 4,600 | 4,700 | 165            |
| 170  | 3,700                   | 3,800  |        |        | 3,700                   | 3,900  | 4,100 |       | 170            |
| 175  | 3,400                   | 3,400  |        |        | 3,400                   | 3,600  | 3,800 |       | 175            |
| 180  |                         |        |        |        | 3,000                   | 3,200  | 3,400 |       | 180            |
| 185  |                         |        |        |        | 2,800                   | 2,900  | 3,000 |       | 185            |
| 190  |                         |        |        |        | 2,500                   | 2,600  |       |       | 190            |
| 195  |                         |        |        |        | 2,300                   | 2,300  |       |       | 195            |
| 200  |                         |        |        |        | 2,100                   |        |       |       | 200            |

This information is not for crane operation. Operator must refer to the in-cab information for crane operation. Rated lifting capacities shown on fully extended outriggers do not exceed 85% of the tipping loads and on tires do not exceed 75% of the tipping loads.

| 60,000 lb Counterweight – Fully Extended Outriggers – 360° Rotation<br>(All Capacities Are Listed In Pounds) |                         |       |       |       |                         |       |       |       |                          |       |       |       |             |     |
|--|-------------------------|-------|-------|-------|-------------------------|-------|-------|-------|--------------------------|-------|-------|-------|-------------|-----|
| 155.0 ft Main Boom Length  |                         |       |       |       |                         |       |       |       |                          |       |       |       |             |     |
| Radius (ft)  | 73 ft Manual Offset Fly |       |       |       | 91 ft Manual Offset Fly |       |       |       | 109 ft Manual Offset Fly |       |       |       | Radius (ft) |     |
|  | 2°                      | 15°   | 30°   | 45°   | 2°                      | 15°   | 30°   | 45°   | 2°                       | 15°   | 30°   | 45°   |             |     |
| 50   | 11,200                  |       |       |       |                         |       |       |       |                          |       |       |       |             | 50  |
| 55   | 11,200                  |       |       |       | 8,600                   |       |       |       |                          |       |       |       |             | 55  |
| 60   | 11,100                  |       |       |       | 8,600                   |       |       |       |                          | 6,700 |       |       |             | 60  |
| 65   | 10,900                  | 9,900 |       |       | 8,600                   |       |       |       |                          | 6,700 |       |       |             | 65  |
| 70   | 10,800                  | 9,700 |       |       | 8,600                   | 8,700 |       |       |                          | 6,700 |       |       |             | 70  |
| 75   | 10,600                  | 9,500 | 8,400 |       | 8,600                   | 8,600 |       |       |                          | 6,700 | 6,700 |       |             | 75  |
| 80   | 10,400                  | 9,400 | 8,300 |       | 8,600                   | 8,200 | 7,200 |       |                          | 6,700 | 6,400 |       |             | 80  |
| 85   | 10,200                  | 9,200 | 8,200 |       | 8,600                   | 7,800 | 6,900 |       |                          | 6,500 | 6,000 |       |             | 85  |
| 90   | 10,100                  | 9,100 | 8,000 | 7,300 | 8,300                   | 7,400 | 6,600 |       |                          | 6,100 | 5,700 | 5,200 |             | 90  |
| 95   | 9,900                   | 8,900 | 7,900 | 7,100 | 7,900                   | 7,100 | 6,300 | 5,800 |                          | 5,800 | 5,400 | 4,900 |             | 95  |
| 100  | 9,700                   | 8,800 | 7,700 | 6,900 | 7,500                   | 6,800 | 6,000 | 5,600 |                          | 5,500 | 5,100 | 4,600 | 4,400       | 100 |
| 105  | 9,500                   | 8,600 | 7,500 | 6,700 | 7,100                   | 6,500 | 5,800 | 5,400 |                          | 5,200 | 4,800 | 4,400 | 4,100       | 105 |
| 110  | 9,400                   | 8,300 | 7,200 | 6,600 | 6,800                   | 6,200 | 5,500 | 5,100 |                          | 4,900 | 4,500 | 4,200 | 3,900       | 110 |
| 115  | 9,100                   | 8,000 | 7,000 | 6,400 | 6,500                   | 5,900 | 5,300 | 4,900 |                          | 4,600 | 4,300 | 3,900 | 3,700       | 115 |
| 120  | 8,400                   | 7,700 | 6,800 | 6,200 | 6,200                   | 5,700 | 5,100 | 4,800 |                          | 4,400 | 4,100 | 3,700 | 3,500       | 120 |
| 125  | 7,800                   | 7,500 | 6,600 | 6,100 | 5,900                   | 5,400 | 4,900 | 4,600 |                          | 4,100 | 3,800 | 3,500 | 3,300       | 125 |
| 130  | 7,200                   | 7,300 | 6,400 | 6,000 | 5,700                   | 5,200 | 4,700 | 4,400 |                          | 3,900 | 3,600 | 3,400 | 3,200       | 130 |
| 135  | 6,600                   | 7,000 | 6,300 | 5,800 | 5,500                   | 5,000 | 4,600 | 4,300 |                          | 3,700 | 3,500 | 3,200 | 3,000       | 135 |
| 140  | 6,100                   | 6,500 | 6,100 | 5,700 | 5,200                   | 4,800 | 4,400 | 4,200 |                          | 3,500 | 3,300 | 3,000 | 2,900       | 140 |
| 145  | 5,600                   | 6,000 | 6,000 | 5,600 | 5,000                   | 4,600 | 4,200 | 4,000 |                          | 3,400 | 3,100 | 2,900 | 2,700       | 145 |
| 150  | 5,100                   | 5,500 | 5,800 | 5,500 | 4,600                   | 4,500 | 4,100 | 3,900 |                          | 3,200 | 3,000 | 2,700 | 2,600       | 150 |
| 155  | 4,700                   | 5,000 | 5,400 | 5,400 | 4,200                   | 4,300 | 4,000 | 3,800 |                          | 3,000 | 2,800 | 2,600 | 2,500       | 155 |
| 160  | 4,200                   | 4,600 | 4,900 | 5,200 | 3,800                   | 4,100 | 3,800 | 3,700 |                          | 2,900 | 2,700 | 2,500 | 2,400       | 160 |
| 165  | 3,800                   | 4,100 | 4,500 | 4,700 | 3,400                   | 3,700 | 3,700 | 3,600 |                          | 2,700 | 2,500 | 2,300 | 2,200       | 165 |
| 170  | 3,500                   | 3,700 | 4,100 | 4,300 | 3,000                   | 3,400 | 3,600 | 3,500 |                          | 2,600 | 2,400 | 2,200 | 2,100       | 170 |
| 175  | 3,100                   | 3,400 | 3,700 | 3,800 | 2,700                   | 3,000 | 3,300 | 3,400 |                          | 2,200 | 2,300 | 2,100 | 2,000       | 175 |
| 180  | 2,800                   | 3,000 | 3,300 | 3,400 | 2,400                   | 2,600 | 3,000 | 3,200 |                          | 1,900 | 2,200 | 2,000 | 2,000       | 180 |
| 185  | 2,400                   | 2,700 | 2,900 |       | 2,000                   | 2,300 | 2,600 | 2,800 |                          | 1,600 | 1,900 | 1,900 | 1,900       | 185 |
| 190  | 2,100                   | 2,300 | 2,500 |       | 1,800                   | 2,000 | 2,300 | 2,400 |                          | 1,300 | 1,600 | 1,800 | 1,800       | 190 |
| 195  | 1,800                   | 2,000 | 2,200 |       | 1,500                   | 1,700 | 1,900 | 2,000 |                          |       | 1,300 | 1,600 | 1,700       | 195 |
| 200  | 1,600                   | 1,700 | 1,900 |       | 1,200                   | 1,400 | 1,600 |       |                          |       |       | 1,300 | 1,400       | 200 |
| 205  | 1,300                   | 1,500 | 1,500 |       |                         |       | 1,300 |       |                          |       |       |       |             | 205 |
| 210  |                         | 1,200 |       |       |                         |       |       |       |                          |       |       |       |             | 210 |

This information is not for crane operation. Operator must refer to the in-cab information for crane operation. Rated lifting capacities shown on fully extended outriggers do not exceed 85% of the tipping loads and on tires do not exceed 75% of the tipping loads.



| 20,000 lb Counterweight – Fully Extended Outriggers – 360° Rotation<br>(All Capacities Are Listed In Pounds) |                         |        |        |        |                         |       |       |       |                |
|--|-------------------------|--------|--------|--------|-------------------------|-------|-------|-------|----------------|
| 195.3 ft Main Boom Length  |                         |        |        |        |                         |       |       |       |                |
| Radius<br>(ft)   | 31 ft Manual Offset Fly |        |        |        | 55 ft Manual Offset Fly |       |       |       | Radius<br>(ft) |
|  | 2°                      | 15°    | 30°    | 45°    | 2°                      | 15°   | 30°   | 45°   |                |
| 50   | 10,800                  |        |        |        |                         |       |       |       | 50             |
| 55   | 10,800                  |        |        |        | 8,300                   |       |       |       | 55             |
| 60   | 10,800                  | 10,800 |        |        | 8,300                   |       |       |       | 60             |
| 65   | 10,800                  | 10,800 |        |        | 8,300                   |       |       |       | 65             |
| 70   | 10,800                  | 10,800 | 10,900 |        | 8,300                   |       |       |       | 70             |
| 75   | 10,800                  | 10,800 | 10,900 | 11,100 | 8,300                   | 8,400 |       |       | 75             |
| 80   | 10,800                  | 10,800 | 10,900 | 11,100 | 8,300                   | 8,300 |       |       | 80             |
| 85   | 10,800                  | 10,800 | 10,900 | 11,100 | 8,300                   | 8,200 |       |       | 85             |
| 90   | 10,300                  | 10,800 | 10,900 | 11,100 | 8,300                   | 8,200 | 7,400 |       | 90             |
| 95   | 8,900                   | 9,700  | 10,500 | 11,100 | 8,300                   | 8,100 | 7,300 |       | 95             |
| 100  | 7,700                   | 8,400  | 9,200  | 9,800  | 8,300                   | 8,000 | 7,300 | 6,800 | 100            |
| 105  | 6,600                   | 7,300  | 8,000  | 8,500  | 7,400                   | 7,900 | 7,200 | 6,800 | 105            |
| 110  | 5,600                   | 6,300  | 6,900  | 7,400  | 6,400                   | 7,500 | 7,100 | 6,800 | 110            |
| 115  | 4,800                   | 5,400  | 6,000  | 6,400  | 5,500                   | 6,600 | 7,100 | 6,700 | 115            |
| 120  | 4,000                   | 4,600  | 5,100  | 5,500  | 4,700                   | 5,700 | 6,700 | 6,700 | 120            |
| 125  | 3,300                   | 3,800  | 4,300  | 4,700  | 4,000                   | 4,900 | 5,900 | 6,600 | 125            |
| 130  | 2,600                   | 3,100  | 3,600  | 3,900  | 3,300                   | 4,200 | 5,100 | 5,800 | 130            |
| 135  | 2,000                   | 2,500  | 2,900  | 3,200  | 2,700                   | 3,500 | 4,400 | 5,000 | 135            |
| 140  | 1,500                   | 1,900  | 2,300  | 2,600  | 2,100                   | 2,900 | 3,700 | 4,300 | 140            |
| 145  |                         | 1,400  | 1,700  | 2,000  | 1,600                   | 2,400 | 3,100 | 3,600 | 145            |
| 150  |                         |        | 1,200  | 1,400  |                         | 1,800 | 2,500 | 3,000 | 150            |
| 155  |                         |        |        |        |                         | 1,400 | 2,000 | 2,400 | 155            |
| 160  |                         |        |        |        |                         |       | 1,500 | 1,900 | 160            |
| 165  |                         |        |        |        |                         |       |       | 1,400 | 165            |

This information is not for crane operation. Operator must refer to the in-cab information for crane operation. Rated lifting capacities shown on fully extended outriggers do not exceed 85% of the tipping loads and on tires do not exceed 75% of the tipping loads.

| 60,000 lb Counterweight – Fully Extended Outriggers – 360° Rotation<br>(All Capacities Are Listed In Pounds) |                         |        |        |        |                         |       |       |       |             |
|--|-------------------------|--------|--------|--------|-------------------------|-------|-------|-------|-------------|
| 195.3 ft Main Boom Length  |                         |        |        |        |                         |       |       |       |             |
| Radius (ft)  | 31 ft Manual Offset Fly |        |        |        | 55 ft Manual Offset Fly |       |       |       | Radius (ft) |
|  | 2°                      | 15°    | 30°    | 45°    | 2°                      | 15°   | 30°   | 45°   |             |
| 50   | 10,800                  |        |        |        |                         |       |       |       | 50          |
| 55   | 10,800                  |        |        |        | 8,300                   |       |       |       | 55          |
| 60   | 10,800                  | 10,800 |        |        | 8,300                   |       |       |       | 60          |
| 65   | 10,800                  | 10,800 |        |        | 8,300                   |       |       |       | 65          |
| 70   | 10,800                  | 10,800 | 10,900 |        | 8,300                   |       |       |       | 70          |
| 75   | 10,800                  | 10,800 | 10,900 | 11,100 | 8,300                   | 8,400 |       |       | 75          |
| 80   | 10,800                  | 10,800 | 10,900 | 11,100 | 8,300                   | 8,300 |       |       | 80          |
| 85   | 10,800                  | 10,800 | 10,900 | 11,100 | 8,300                   | 8,200 |       |       | 85          |
| 90   | 10,800                  | 10,800 | 10,900 | 11,100 | 8,300                   | 8,200 | 7,400 |       | 90          |
| 95   | 10,800                  | 10,800 | 10,900 | 11,100 | 8,300                   | 8,100 | 7,300 |       | 95          |
| 100  | 10,800                  | 10,800 | 10,900 | 11,100 | 8,300                   | 8,000 | 7,300 | 6,800 | 100         |
| 105  | 10,100                  | 10,400 | 10,800 | 11,100 | 8,300                   | 7,900 | 7,200 | 6,800 | 105         |
| 110  | 9,300                   | 9,700  | 10,000 | 10,300 | 8,300                   | 7,800 | 7,100 | 6,800 | 110         |
| 115  | 8,600                   | 9,000  | 9,300  | 9,600  | 8,300                   | 7,700 | 7,100 | 6,700 | 115         |
| 120  | 8,000                   | 8,300  | 8,600  | 8,900  | 7,700                   | 7,600 | 7,000 | 6,700 | 120         |
| 125  | 7,400                   | 7,700  | 8,000  | 8,200  | 7,100                   | 7,600 | 7,000 | 6,700 | 125         |
| 130  | 6,800                   | 7,100  | 7,400  | 7,600  | 6,600                   | 7,000 | 6,900 | 6,700 | 130         |
| 135  | 6,300                   | 6,600  | 6,800  | 7,000  | 6,000                   | 6,500 | 6,900 | 6,600 | 135         |
| 140  | 5,800                   | 6,000  | 6,300  | 6,500  | 5,600                   | 6,000 | 6,400 | 6,600 | 140         |
| 145  | 5,300                   | 5,500  | 5,800  | 6,000  | 5,100                   | 5,500 | 5,900 | 6,300 | 145         |
| 150  | 4,800                   | 5,100  | 5,300  | 5,500  | 4,700                   | 5,100 | 5,500 | 5,800 | 150         |
| 155  | 4,400                   | 4,600  | 4,900  | 5,000  | 4,300                   | 4,600 | 5,000 | 5,300 | 155         |
| 160  | 4,000                   | 4,200  | 4,400  | 4,500  | 3,900                   | 4,200 | 4,600 | 4,800 | 160         |
| 165  | 3,600                   | 3,800  | 4,000  | 4,100  | 3,500                   | 3,800 | 4,200 | 4,400 | 165         |
| 170  | 3,300                   | 3,500  | 3,600  | 3,700  | 3,100                   | 3,500 | 3,800 | 4,000 | 170         |
| 175  | 2,900                   | 3,100  | 3,200  | 3,300  | 2,800                   | 3,100 | 3,400 | 3,600 | 175         |
| 180  | 2,600                   | 2,800  | 2,900  |        | 2,500                   | 2,800 | 3,000 | 3,200 | 180         |
| 185  | 2,300                   | 2,400  | 2,500  |        | 2,200                   | 2,500 | 2,700 | 2,800 | 185         |
| 190  | 2,000                   | 2,100  | 2,200  |        | 1,900                   | 2,100 | 2,400 | 2,500 | 190         |
| 195  | 1,700                   | 1,800  | 1,900  |        | 1,600                   | 1,800 | 2,000 | 2,100 | 195         |
| 200  | 1,500                   | 1,600  | 1,600  |        | 1,300                   | 1,600 | 1,700 | 1,800 | 200         |
| 205  | 1,200                   | 1,300  |        |        |                         | 1,300 | 1,400 |       | 205         |
| 210  |                         |        |        |        |                         |       | 1,200 |       | 210         |

This information is not for crane operation. Operator must refer to the in-cab information for crane operation. Rated lifting capacities shown on fully extended outriggers do not exceed 85% of the tipping loads and on tires do not exceed 75% of the tipping loads.

| 60,000 lb Counterweight – Fully Extended Outriggers – 360° Rotation<br>(All Capacities Are Listed In Pounds) |                         |       |       |       |                         |       |       |       |                          |       |       |       |                |
|--|-------------------------|-------|-------|-------|-------------------------|-------|-------|-------|--------------------------|-------|-------|-------|----------------|
| 195.3 ft Main Boom Length  |                         |       |       |       |                         |       |       |       |                          |       |       |       |                |
| Radius<br>(ft)   | 73 ft Manual Offset Fly |       |       |       | 91 ft Manual Offset Fly |       |       |       | 109 ft Manual Offset Fly |       |       |       | Radius<br>(ft) |
|  | 2°                      | 15°   | 30°   | 45°   | 2°                      | 15°   | 30°   | 45°   | 2°                       | 15°   | 30°   | 45°   |                |
| 65   | 6,700                   |       |       |       |                         |       |       |       |                          |       |       |       | 65             |
| 70   | 6,700                   |       |       |       | 5,200                   |       |       |       |                          |       |       |       | 70             |
| 75   | 6,700                   |       |       |       | 5,200                   |       |       |       |                          |       |       |       | 75             |
| 80   | 6,700                   |       |       |       | 5,200                   |       |       |       |                          |       |       |       | 80             |
| 85   | 6,700                   | 6,800 |       |       | 5,200                   |       |       |       | 3,100                    |       |       |       | 85             |
| 90   | 6,700                   | 6,800 |       |       | 5,200                   | 5,200 |       |       | 3,100                    |       |       |       | 90             |
| 95   | 6,700                   | 6,800 |       |       | 5,200                   | 5,200 |       |       | 3,100                    |       |       |       | 95             |
| 100  | 6,700                   | 6,800 | 6,900 |       | 5,200                   | 5,200 |       |       | 3,100                    |       |       |       | 100            |
| 105  | 6,700                   | 6,800 | 6,900 |       | 5,200                   | 5,200 | 5,300 |       | 3,100                    | 3,100 |       |       | 105            |
| 110  | 6,700                   | 6,800 | 6,800 | 6,200 | 5,200                   | 5,200 | 5,200 |       | 3,100                    | 3,100 |       |       | 110            |
| 115  | 6,700                   | 6,800 | 6,800 | 6,100 | 5,200                   | 5,200 | 5,000 | 4,600 | 3,100                    | 3,100 | 3,100 |       | 115            |
| 120  | 6,200                   | 6,600 | 6,700 | 6,000 | 5,200                   | 5,200 | 4,900 | 4,400 | 3,100                    | 3,100 | 2,900 |       | 120            |
| 125  | 5,600                   | 6,000 | 6,500 | 5,800 | 4,800                   | 5,200 | 4,700 | 4,300 | 3,100                    | 3,100 | 2,700 | 2,400 | 125            |
| 130  | 5,000                   | 5,400 | 6,000 | 5,700 | 4,300                   | 4,800 | 4,500 | 4,200 | 2,900                    | 2,900 | 2,500 | 2,300 | 130            |
| 135  | 4,500                   | 4,900 | 5,400 | 5,600 | 3,800                   | 4,300 | 4,400 | 4,000 | 2,500                    | 2,700 | 2,400 | 2,200 | 135            |
| 140  | 4,000                   | 4,400 | 4,900 | 5,300 | 3,400                   | 3,800 | 4,200 | 3,900 | 2,000                    | 2,500 | 2,200 | 2,000 | 140            |
| 145  | 3,600                   | 4,000 | 4,400 | 4,800 | 2,900                   | 3,300 | 3,800 | 3,800 | 1,600                    | 2,100 | 2,100 | 1,900 | 145            |
| 150  | 3,100                   | 3,500 | 3,900 | 4,300 | 2,500                   | 2,900 | 3,400 | 3,700 | 1,200                    | 1,700 | 2,000 | 1,800 | 150            |
| 155  | 2,700                   | 3,100 | 3,500 | 3,800 | 2,100                   | 2,500 | 3,000 | 3,300 |                          | 1,300 | 1,700 | 1,600 | 155            |
| 160  | 2,400                   | 2,700 | 3,100 | 3,400 | 1,800                   | 2,100 | 2,600 | 2,900 |                          |       | 1,300 | 1,500 | 160            |
| 165  | 2,000                   | 2,300 | 2,700 | 3,000 | 1,400                   | 1,800 | 2,200 | 2,500 |                          |       |       | 1,300 | 165            |
| 170  | 1,600                   | 2,000 | 2,300 | 2,600 |                         | 1,400 | 1,800 | 2,100 |                          |       |       |       | 170            |
| 175  | 1,300                   | 1,600 | 2,000 | 2,200 |                         |       | 1,500 | 1,700 |                          |       |       |       | 175            |
| 180  |                         | 1,300 | 1,600 | 1,800 |                         |       |       | 1,400 |                          |       |       |       | 180            |
| 185  |                         |       | 1,300 | 1,500 |                         |       |       |       |                          |       |       |       | 185            |

This information is not for crane operation. Operator must refer to the in-cab information for crane operation. Rated lifting capacities shown on fully extended outriggers do not exceed 85% of the tipping loads and on tires do not exceed 75% of the tipping loads.

# Hydraulic Offset Fly Attachment Lift Capacity Charts – Optional

| 20,000 lb Counterweight – Fully Extended Outriggers – 360° Rotation<br>(All Capacities Are Listed In Pounds) |                       |        |        |        |        |        |        |        |        |        |        |        |        |        |        |             |     |
|--|-----------------------|--------|--------|--------|--------|--------|--------|--------|--------|--------|--------|--------|--------|--------|--------|-------------|-----|
| Main Boom + 10 ft Hydraulic Offset Fly (2°–45° Offsets)  |                       |        |        |        |        |        |        |        |        |        |        |        |        |        |        |             |     |
| Radius (ft)  | Main Boom Length (ft) |        |        |        |        |        |        |        |        |        |        |        |        |        |        | Radius (ft) |     |
|  | 42.3                  | 55.0   | 70.0   | 85.0   | 100.0  | 115.0  | 130.0  | 145.0  | 155.0  | 160.0  | 170.0  | 175.0  | 180.3  | 185.0  | 195.3  |             |     |
| 10   | 51,800                | 51,800 |        |        |        |        |        |        |        |        |        |        |        |        |        |             | 10  |
| 12   | 47,200                | 51,800 | 51,800 |        |        |        |        |        |        |        |        |        |        |        |        |             | 12  |
| 15   | 46,200                | 46,600 | 51,800 | 51,800 |        |        |        |        |        |        |        |        |        |        |        |             | 15  |
| 20   | 45,000                | 45,500 | 45,700 | 45,300 | 51000  |        |        |        |        |        |        |        |        |        |        |             | 20  |
| 25   | 44,400                | 44,600 | 44,900 | 44,600 | 43200  | 45,600 | 40,000 |        |        |        |        |        |        |        |        |             | 25  |
| 30   | 44,400                | 44,200 | 44,300 | 44,100 | 42800  | 41,800 | 40,000 | 35,900 | 28,500 | 24,000 |        | 15,200 |        |        |        |             | 30  |
| 35   | 44,400                | 44,100 | 43,900 | 43,600 | 41000  | 40,500 | 38,000 | 35,900 | 28,500 | 24,000 | 22,200 | 15,200 | 19,500 | 14,100 | 12,300 |             | 35  |
| 40   | 44,400                | 44,100 | 43,700 | 43,300 | 37200  | 36,700 | 34,500 | 35,700 | 28,500 | 24,000 | 22,200 | 15,200 | 19,500 | 14,100 | 12,300 |             | 40  |
| 45   |                       | 41,900 | 43,000 | 42,900 | 34300  | 33,700 | 31,600 | 32,900 | 28,500 | 24,000 | 22,200 | 15,200 | 19,500 | 14,100 | 12,300 |             | 45  |
| 50   |                       | 34,600 | 35,500 | 35,400 | 31500  | 30,900 | 29,000 | 30,400 | 28,000 | 24,000 | 22,200 | 15,200 | 19,500 | 14,100 | 12,300 |             | 50  |
| 55   |                       | 28,900 | 30,700 | 29,900 | 29100  | 28,400 | 26,600 | 27,300 | 25,400 | 24,000 | 22,200 | 15,200 | 19,500 | 14,100 | 12,300 |             | 55  |
| 60   |                       |        | 26,300 | 26,900 | 25200  | 24,600 | 23,900 | 22,900 | 22,400 | 22,300 | 22,200 | 15,200 | 19,500 | 14,100 | 12,300 |             | 60  |
| 65   |                       |        | 22,700 | 23,300 | 23000  | 21,800 | 21,200 | 20,600 | 18,900 | 20,600 | 20,500 | 15,200 | 19,500 | 14,100 | 12,300 |             | 65  |
| 70   |                       |        | 19,800 | 20,300 | 20300  | 20,300 | 19,600 | 19,200 | 16,200 | 18,200 | 17,600 | 15,200 | 17,100 | 14,100 | 12,300 |             | 70  |
| 75   |                       |        |        | 17,800 | 18,100 | 17,900 | 17,100 | 17,200 | 13,800 | 16,400 | 15,400 | 15,200 | 14,900 | 14,100 | 12,300 |             | 75  |
| 80   |                       |        |        | 15,800 | 16,100 | 15,900 | 15,700 | 15,100 | 11,800 | 14,600 | 13,300 | 13,800 | 12,800 | 13,300 | 12,300 |             | 80  |
| 85   |                       |        |        | 14,000 | 14,300 | 14,100 | 13,900 | 13,300 | 10,000 | 12,800 | 11,500 | 12,000 | 11,000 | 11,500 | 11,100 |             | 85  |
| 90   |                       |        |        |        | 12,700 | 12,500 | 12,300 | 11,700 | 8,500  | 11,200 | 10,000 | 10,500 | 9,500  | 10,000 | 9,500  |             | 90  |
| 95   |                       |        |        |        | 11,300 | 11,100 | 10,900 | 10,400 | 7,100  | 9,900  | 8,600  | 9,100  | 8,100  | 8,600  | 8,200  |             | 95  |
| 100  |                       |        |        |        | 10,100 | 9,900  | 9,700  | 9,100  | 5,900  | 8,600  | 7,400  | 7,900  | 6,900  | 7,400  | 7,000  |             | 100 |
| 105  |                       |        |        |        |        | 8,800  | 8,600  | 8,000  | 4,900  | 7,600  | 6,300  | 6,800  | 5,900  | 6,300  | 5,900  |             | 105 |
| 110  |                       |        |        |        |        | 7,800  | 7,600  | 7,100  | 3,900  | 6,600  | 5,400  | 5,900  | 4,900  | 5,400  | 4,900  |             | 110 |
| 115  |                       |        |        |        |        | 7,000  | 6,700  | 6,200  | 3,100  | 5,700  | 4,500  | 5,000  | 4,100  | 4,500  | 4,100  |             | 115 |
| 120  |                       |        |        |        |        |        | 6,000  | 5,400  | 2,300  | 4,900  | 3,700  | 4,200  | 3,300  | 3,700  | 3,300  |             | 120 |
| 125  |                       |        |        |        |        |        | 5,200  | 4,700  | 1,600  | 4,200  | 3,000  | 3,500  | 2,600  | 3,000  | 2,600  |             | 125 |
| 130  |                       |        |        |        |        |        | 4,600  | 4,000  |        | 3,600  | 2,400  | 2,800  | 1,900  | 2,400  | 1,900  |             | 130 |
| 135  |                       |        |        |        |        |        |        | 3,400  |        | 3,000  | 1,800  | 2,200  | 1,300  | 1,800  | 1,300  |             | 135 |
| 140  |                       |        |        |        |        |        |        | 2,900  |        | 2,400  | 1,200  | 1,700  |        | 1,200  |        |             | 140 |
| 145  |                       |        |        |        |        |        |        | 2,400  |        | 1,900  |        | 1,200  |        |        |        |             | 145 |
| 150  |                       |        |        |        |        |        |        |        |        | 1,400  |        |        |        |        |        |             | 150 |

This information is not for crane operation. Operator must refer to the in-cab information for crane operation. Rated lifting capacities shown on fully extended outriggers do not exceed 85% of the tipping loads and on tires do not exceed 75% of the tipping loads.

| 60,000 lb Counterweight – Fully Extended Outriggers – 360° Rotation<br>(All Capacities Are Listed In Pounds) |                       |        |        |        |        |        |        |        |        |        |        |        |        |        |        |                |
|--|-----------------------|--------|--------|--------|--------|--------|--------|--------|--------|--------|--------|--------|--------|--------|--------|----------------|
| Main Boom + 10 ft Hydraulic Offset Fly (2°–45° Offsets)  |                       |        |        |        |        |        |        |        |        |        |        |        |        |        |        |                |
| Radius<br>(ft)   | Main Boom Length (ft) |        |        |        |        |        |        |        |        |        |        |        |        |        |        | Radius<br>(ft) |
|  | 42.3                  | 55.0   | 70.0   | 85.0   | 100.0  | 115.0  | 130.0  | 145.0  | 155.0  | 160.0  | 170.0  | 175.0  | 180.3  | 185.0  | 195.3  |                |
| 10   | 51,800                | 51,800 |        |        |        |        |        |        |        |        |        |        |        |        |        | 10             |
| 12   | 47,200                | 51,800 | 51,800 |        |        |        |        |        |        |        |        |        |        |        |        | 12             |
| 15   | 46,200                | 46,600 | 51,800 | 51,800 |        |        |        |        |        |        |        |        |        |        |        | 15             |
| 20   | 45,000                | 45,500 | 45,700 | 45,300 | 51000  |        |        |        |        |        |        |        |        |        |        | 20             |
| 25   | 44,400                | 44,600 | 44,900 | 44,600 | 43200  | 45,600 | 40,000 |        |        |        |        |        |        |        |        | 25             |
| 30   | 44,400                | 44,200 | 44,300 | 44,100 | 42800  | 41,800 | 40,000 | 35,900 | 28,500 | 24,000 |        | 15,200 |        |        |        | 30             |
| 35   | 44,400                | 44,100 | 43,900 | 43,600 | 41000  | 40,500 | 38,000 | 35,900 | 28,500 | 24,000 | 22,200 | 15,200 | 19,500 | 14,100 | 12,300 | 35             |
| 40   | 44,400                | 44,100 | 43,700 | 43,300 | 37200  | 36,700 | 34,500 | 35,700 | 28,500 | 24,000 | 22,200 | 15,200 | 19,500 | 14,100 | 12,300 | 40             |
| 45   |                       | 44,100 | 43,700 | 43,200 | 34300  | 33,700 | 31,600 | 32,900 | 28,500 | 24,000 | 22,200 | 15,200 | 19,500 | 14,100 | 12,300 | 45             |
| 50   |                       | 44,000 | 43,700 | 43,200 | 31500  | 30,900 | 29,000 | 30,400 | 28,000 | 24,000 | 22,200 | 15,200 | 19,500 | 14,100 | 12,300 | 50             |
| 55   |                       | 42,100 | 43,700 | 43,200 | 29100  | 28,400 | 26,600 | 28,100 | 25,400 | 24,000 | 22,200 | 15,200 | 19,500 | 14,100 | 12,300 | 55             |
| 60   |                       |        | 43,000 | 40,300 | 26900  | 26,200 | 24,500 | 26,100 | 23,100 | 22,300 | 22,200 | 15,200 | 19,500 | 14,100 | 12,300 | 60             |
| 65   |                       |        | 37,900 | 37,600 | 25000  | 24,300 | 22,700 | 24,100 | 21,100 | 20,600 | 21,400 | 15,200 | 19,500 | 14,100 | 12,300 | 65             |
| 70   |                       |        | 33,700 | 33,600 | 23400  | 22,500 | 21,000 | 22,300 | 19,300 | 19,100 | 20,000 | 15,200 | 18,600 | 14,100 | 12,300 | 70             |
| 75   |                       |        |        | 30,100 | 21,800 | 20,900 | 19,500 | 20,700 | 17,600 | 17,700 | 18,600 | 15,200 | 16,600 | 14,100 | 12,300 | 75             |
| 80   |                       |        |        | 27,000 | 20,500 | 19,500 | 18,100 | 19,200 | 16,400 | 16,700 | 17,400 | 15,200 | 16,000 | 14,100 | 12,300 | 80             |
| 85   |                       |        |        | 24,400 | 19,300 | 18,300 | 17,200 | 17,800 | 15,100 | 15,600 | 16,400 | 14,800 | 14,700 | 14,100 | 12,300 | 85             |
| 90   |                       |        |        |        | 18,200 | 17,200 | 16,000 | 16,800 | 13,800 | 14,600 | 15,400 | 13,800 | 13,600 | 13,800 | 12,300 | 90             |
| 95   |                       |        |        |        | 17,200 | 16,200 | 15,000 | 15,600 | 12,700 | 13,600 | 14,500 | 12,900 | 12,500 | 12,800 | 12,000 | 95             |
| 100  |                       |        |        |        | 16,500 | 15,300 | 14,000 | 14,600 | 11,600 | 12,700 | 13,500 | 12,100 | 11,500 | 11,800 | 11,100 | 100            |
| 105  |                       |        |        |        |        | 14,400 | 13,100 | 13,600 | 10,700 | 11,900 | 12,700 | 11,300 | 10,600 | 10,900 | 10,200 | 105            |
| 110  |                       |        |        |        |        | 13,500 | 12,300 | 12,600 | 9,800  | 11,200 | 11,800 | 10,600 | 9,800  | 10,100 | 9,400  | 110            |
| 115  |                       |        |        |        |        | 12,800 | 11,500 | 11,700 | 9,000  | 10,500 | 11,100 | 9,900  | 9,000  | 9,300  | 8,600  | 115            |
| 120  |                       |        |        |        |        |        | 10,800 | 10,900 | 8,200  | 9,800  | 10,400 | 9,300  | 8,300  | 8,600  | 7,900  | 120            |
| 125  |                       |        |        |        |        |        | 10,300 | 9,800  | 7,500  | 9,200  | 9,700  | 8,700  | 7,600  | 7,900  | 7,200  | 125            |
| 130  |                       |        |        |        |        |        | 9,800  | 9,000  | 6,800  | 8,700  | 9,100  | 8,100  | 7,000  | 7,300  | 6,600  | 130            |
| 135  |                       |        |        |        |        |        |        | 8,500  | 6,200  | 8,200  | 8,500  | 7,600  | 6,400  | 6,700  | 6,000  | 135            |
| 140  |                       |        |        |        |        |        |        | 8,000  | 5,600  | 7,700  | 8,000  | 7,100  | 5,800  | 6,100  | 5,400  | 140            |
| 145  |                       |        |        |        |        |        |        | 7,600  | 5,100  | 7,200  | 7,300  | 6,700  | 5,300  | 5,600  | 4,900  | 145            |
| 150  |                       |        |        |        |        |        |        |        | 4,500  | 6,800  | 6,600  | 6,200  | 4,800  | 5,100  | 4,400  | 150            |
| 155  |                       |        |        |        |        |        |        |        | 4,100  | 6,400  | 6,000  | 5,800  | 4,300  | 4,700  | 4,000  | 155            |
| 165  |                       |        |        |        |        |        |        |        |        |        | 4,800  | 5,100  | 3,500  | 3,800  | 3,100  | 165            |
| 170  |                       |        |        |        |        |        |        |        |        |        |        | 4,700  | 3,100  | 3,400  | 2,700  | 170            |
| 175  |                       |        |        |        |        |        |        |        |        |        |        |        | 2,700  | 3,100  | 2,400  | 175            |
| 180  |                       |        |        |        |        |        |        |        |        |        |        |        |        | 2,700  | 2,000  | 180            |
| 185  |                       |        |        |        |        |        |        |        |        |        |        |        |        |        | 1,700  | 185            |
| 190  |                       |        |        |        |        |        |        |        |        |        |        |        |        |        | 1,400  | 190            |

This information is not for crane operation. Operator must refer to the in-cab information for crane operation. Rated lifting capacities shown on fully extended outriggers do not exceed 85% of the tipping loads and on tires do not exceed 75% of the tipping loads.

| 20,000 lb Counterweight – Fully Extended Outriggers – 360° Rotation<br>(All Capacities Are Listed In Pounds) |                            |         |         |                            |         |         |                |
|--|----------------------------|---------|---------|----------------------------|---------|---------|----------------|
| 155.0 ft Main Boom Length  |                            |         |         |                            |         |         |                |
| Radius<br>(ft)   | 31 ft Hydraulic Offset Fly |         |         | 55 ft Hydraulic Offset Fly |         |         | Radius<br>(ft) |
|  | 2°–15°                     | 15°–30° | 30°–45° | 2°–15°                     | 15°–30° | 30°–45° |                |
| 40   | 18,700                     |         |         |                            |         |         | 40             |
| 45   | 17,400                     | 17,400  |         | 12,900                     |         |         | 45             |
| 50   | 17,100                     | 15,200  | 15,200  | 12,600                     |         |         | 50             |
| 55   | 16,800                     | 15,000  | 13,700  | 10,500                     | 10,500  |         | 55             |
| 60   | 16,500                     | 14,800  | 13,600  | 10,300                     | 10,300  |         | 60             |
| 65   | 16,300                     | 14,600  | 13,500  | 10,000                     | 10,000  |         | 65             |
| 70   | 16,000                     | 14,400  | 13,400  | 9,800                      | 8,500   | 8,500   | 70             |
| 75   | 14,700                     | 14,200  | 13,300  | 9,600                      | 8,300   | 8,300   | 75             |
| 80   | 12,600                     | 13,700  | 13,200  | 9,400                      | 8,200   | 7,400   | 80             |
| 85   | 10,900                     | 11,800  | 12,800  | 9,200                      | 8,000   | 7,300   | 85             |
| 90   | 9,300                      | 10,200  | 11,100  | 9,000                      | 7,900   | 7,200   | 90             |
| 95   | 7,900                      | 8,800   | 9,600   | 8,800                      | 7,800   | 7,200   | 95             |
| 100  | 6,700                      | 7,500   | 8,200   | 7,900                      | 7,700   | 7,100   | 100            |
| 105  | 5,700                      | 6,400   | 7,000   | 6,800                      | 7,600   | 7,100   | 105            |
| 110  | 4,700                      | 5,400   | 6,000   | 5,900                      | 7,000   | 7,000   | 110            |
| 115  | 3,900                      | 4,400   | 5,000   | 5,000                      | 6,000   | 7,000   | 115            |
| 120  | 3,100                      | 3,600   | 4,100   | 4,200                      | 5,200   | 6,100   | 120            |
| 125  | 2,400                      | 2,900   | 3,300   | 3,500                      | 4,400   | 5,300   | 125            |
| 130  | 1,700                      | 2,200   | 2,600   | 2,800                      | 3,600   | 4,500   | 130            |
| 135  |                            | 1,500   | 1,900   | 2,200                      | 3,000   | 3,700   | 135            |
| 140  |                            |         | 1,300   | 1,600                      | 2,400   | 3,000   | 140            |
| 145  |                            |         |         |                            | 1,800   | 2,400   | 145            |
| 150  |                            |         |         |                            | 1,300   | 1,800   | 150            |
| 155  |                            |         |         |                            |         | 1,800   | 155            |

This information is not for crane operation. Operator must refer to the in-cab information for crane operation. Rated lifting capacities shown on fully extended outriggers do not exceed 85% of the tipping loads and on tires do not exceed 75% of the tipping loads.

| 60,000 lb Counterweight – Fully Extended Outriggers – 360° Rotation<br>(All Capacities Are Listed In Pounds) |                            |         |         |                            |         |         |                |
|--|----------------------------|---------|---------|----------------------------|---------|---------|----------------|
| 155.0 ft Main Boom Length  |                            |         |         |                            |         |         |                |
| Radius<br>(ft)   | 31 ft Hydraulic Offset Fly |         |         | 55 ft Hydraulic Offset Fly |         |         | Radius<br>(ft) |
|  | 2°–15°                     | 15°–30° | 30°–45° | 2°–15°                     | 15°–30° | 30°–45° |                |
| 40   | 18,700                     |         |         |                            |         |         | 40             |
| 45   | 17,400                     | 17,400  |         | 12,900                     |         |         | 45             |
| 50   | 17,100                     | 15,200  | 15,200  | 12,600                     |         |         | 50             |
| 55   | 16,800                     | 15,000  | 13,700  | 10,500                     | 10,500  |         | 55             |
| 60   | 16,500                     | 14,800  | 13,600  | 10,300                     | 10,300  |         | 60             |
| 65   | 16,300                     | 14,600  | 13,500  | 10,000                     | 10,000  |         | 65             |
| 70   | 16,000                     | 14,400  | 13,400  | 9,800                      | 8,500   | 8,500   | 70             |
| 75   | 15,700                     | 14,200  | 13,300  | 9,600                      | 8,300   | 8,300   | 75             |
| 80   | 15,100                     | 14,000  | 13,200  | 9,400                      | 8,200   | 7,400   | 80             |
| 85   | 13,900                     | 13,800  | 13,100  | 9,200                      | 8,000   | 7,300   | 85             |
| 90   | 12,800                     | 13,200  | 13,000  | 9,000                      | 7,900   | 7,200   | 90             |
| 95   | 11,800                     | 12,200  | 12,600  | 8,800                      | 7,800   | 7,200   | 95             |
| 100  | 10,800                     | 11,200  | 11,600  | 8,600                      | 7,700   | 7,100   | 100            |
| 105  | 10,000                     | 10,300  | 10,700  | 8,400                      | 7,600   | 7,100   | 105            |
| 110  | 9,200                      | 9,500   | 9,800   | 8,300                      | 7,500   | 7,000   | 110            |
| 115  | 8,400                      | 8,700   | 9,100   | 8,100                      | 7,400   | 7,000   | 115            |
| 120  | 7,700                      | 8,000   | 8,300   | 7,700                      | 7,300   | 7,000   | 120            |
| 125  | 7,100                      | 7,300   | 7,600   | 7,000                      | 7,200   | 6,900   | 125            |
| 130  | 6,400                      | 6,700   | 7,000   | 6,400                      | 6,900   | 6,900   | 130            |
| 135  | 5,900                      | 6,100   | 6,300   | 5,900                      | 6,300   | 6,700   | 135            |
| 140  | 5,300                      | 5,600   | 5,800   | 5,400                      | 5,700   | 6,100   | 140            |
| 145  | 4,800                      | 5,000   | 5,200   | 4,900                      | 5,200   | 5,600   | 145            |
| 150  | 4,400                      | 4,500   | 4,700   | 4,400                      | 4,800   | 5,100   | 150            |
| 155  | 3,900                      | 4,100   | 4,200   | 4,000                      | 4,300   | 4,600   | 155            |
| 160  | 3,500                      | 3,700   | 3,700   | 3,600                      | 3,900   | 4,100   | 160            |
| 165  | 3,100                      | 3,200   |         | 3,200                      | 3,500   | 3,700   | 165            |
| 170  | 2,800                      | 2,900   |         | 2,800                      | 3,100   | 3,300   | 170            |
| 175  | 2,500                      | 2,500   |         | 2,500                      | 2,700   | 2,900   | 175            |
| 180  |                            |         |         | 2,200                      | 2,400   | 2,500   | 180            |
| 185  |                            |         |         | 1,900                      | 2,000   | 2,100   | 185            |
| 190  |                            |         |         | 1,600                      | 1,700   | 1,800   | 190            |
| 195  |                            |         |         | 1,400                      |         |         | 195            |

This information is not for crane operation. Operator must refer to the in-cab information for crane operation. Rated lifting capacities shown on fully extended outriggers do not exceed 85% of the tipping loads and on tires do not exceed 75% of the tipping loads.

| 60,000 lb Counterweight – Fully Extended Outriggers – 360° Rotation<br>(All Capacities Are Listed In Pounds) |                            |         |         |                            |         |         |                             |         |         |             |
|--|----------------------------|---------|---------|----------------------------|---------|---------|-----------------------------|---------|---------|-------------|
| 155.0 ft Main Boom Length  |                            |         |         |                            |         |         |                             |         |         |             |
| Radius (ft)  | 73 ft Hydraulic Offset Fly |         |         | 91 ft Hydraulic Offset Fly |         |         | 109 ft Hydraulic Offset Fly |         |         | Radius (ft) |
|  | 2°–15°                     | 15°–30° | 30°–45° | 2°–15°                     | 15°–30° | 30°–45° | 2°–15°                      | 15°–30° | 30°–45° |             |
| 50   | 11,000                     |         |         |                            |         |         |                             |         |         | 50          |
| 55   | 11,000                     |         |         | 8,400                      |         |         |                             |         |         | 55          |
| 60   | 9,800                      | 9,800   |         | 8,400                      |         |         | 6,500                       |         |         | 60          |
| 65   | 9,600                      | 9,600   |         | 8,400                      | 8,400   |         | 6,500                       |         |         | 65          |
| 70   | 9,500                      | 9,500   |         | 8,300                      | 8,300   |         | 6,300                       | 6,300   |         | 70          |
| 75   | 9,300                      | 8,200   | 8,200   | 7,900                      | 7,900   |         | 5,900                       | 5,900   |         | 75          |
| 80   | 9,100                      | 8,000   | 8,000   | 7,400                      | 6,500   | 6,500   | 5,500                       | 5,500   |         | 80          |
| 85   | 9,000                      | 7,900   | 6,900   | 7,000                      | 6,100   | 6,100   | 5,200                       | 4,600   | 4,600   | 85          |
| 90   | 8,800                      | 7,600   | 6,600   | 6,600                      | 5,800   | 5,300   | 4,800                       | 4,300   | 4,300   | 90          |
| 95   | 8,600                      | 7,300   | 6,400   | 6,300                      | 5,500   | 5,000   | 4,500                       | 4,000   | 3,700   | 95          |
| 100  | 8,200                      | 7,000   | 6,200   | 6,000                      | 5,200   | 4,800   | 4,200                       | 3,800   | 3,500   | 100         |
| 105  | 7,900                      | 6,700   | 6,000   | 5,700                      | 5,000   | 4,500   | 3,900                       | 3,500   | 3,300   | 105         |
| 110  | 7,600                      | 6,500   | 5,800   | 5,400                      | 4,700   | 4,300   | 3,700                       | 3,300   | 3,000   | 110         |
| 115  | 7,300                      | 6,300   | 5,700   | 5,100                      | 4,500   | 4,100   | 3,400                       | 3,100   | 2,800   | 115         |
| 120  | 7,000                      | 6,100   | 5,500   | 4,900                      | 4,300   | 4,000   | 3,200                       | 2,800   | 2,600   | 120         |
| 125  | 6,800                      | 5,900   | 5,400   | 4,600                      | 4,100   | 3,800   | 3,000                       | 2,600   | 2,400   | 125         |
| 130  | 6,300                      | 5,700   | 5,200   | 4,400                      | 3,900   | 3,600   | 2,700                       | 2,400   | 2,200   | 130         |
| 135  | 5,700                      | 5,500   | 5,100   | 4,200                      | 3,700   | 3,500   | 2,600                       | 2,300   | 2,100   | 135         |
| 140  | 5,200                      | 5,400   | 5,000   | 4,000                      | 3,600   | 3,300   | 2,400                       | 2,100   | 1,900   | 140         |
| 145  | 4,700                      | 5,100   | 4,900   | 3,800                      | 3,400   | 3,200   | 2,200                       | 1,900   | 1,800   | 145         |
| 150  | 4,200                      | 4,600   | 4,800   | 3,600                      | 3,300   | 3,100   | 2,000                       | 1,800   | 1,600   | 150         |
| 155  | 3,800                      | 4,100   | 4,500   | 3,300                      | 3,100   | 3,000   | 1,900                       | 1,600   | 1,500   | 155         |
| 160  | 3,300                      | 3,700   | 4,100   | 2,900                      | 3,000   | 2,900   | 1,700                       | 1,500   | 1,300   | 160         |
| 165  | 2,900                      | 3,300   | 3,600   | 2,500                      | 2,800   | 2,800   | 1,600                       | 1,300   | 1,200   | 165         |
| 170  | 2,600                      | 2,900   | 3,200   | 2,100                      | 2,400   | 2,700   | 1,400                       | 1,200   |         | 170         |
| 175  | 2,200                      | 2,500   | 2,800   | 1,800                      | 2,100   | 2,400   | 1,300                       |         |         | 175         |
| 180  | 1,800                      | 2,100   | 2,400   | 1,400                      | 1,700   | 2,000   |                             |         |         | 180         |
| 185  | 1,500                      | 1,700   | 2,000   |                            | 1,300   | 1,700   |                             |         |         | 185         |
| 190  | 1,200                      | 1,400   | 1,600   |                            |         | 1,300   |                             |         |         | 190         |
| 195  |                            |         | 1,200   |                            |         |         |                             |         |         | 195         |

This information is not for crane operation. Operator must refer to the in-cab information for crane operation. Rated lifting capacities shown on fully extended outriggers do not exceed 85% of the tipping loads and on tires do not exceed 75% of the tipping loads.



| 20,000 lb Counterweight — Fully Extended Outriggers — 360° Rotation<br>(All Capacities Are Listed In Pounds) |                            |         |         |                            |         |         |                |
|--|----------------------------|---------|---------|----------------------------|---------|---------|----------------|
| 195.3 ft Main Boom Length  |                            |         |         |                            |         |         |                |
| Radius<br>(ft)   | 31 ft Hydraulic Offset Fly |         |         | 55 ft Hydraulic Offset Fly |         |         | Radius<br>(ft) |
|  | 2°—15°                     | 15°—30° | 30°—45° | 2°—15°                     | 15°—30° | 30°—45° |                |
| 50   | 10,500                     |         |         |                            |         |         | 50             |
| 55   | 10,500                     | 10,500  |         | 8,000                      |         |         | 55             |
| 60   | 10,500                     | 10,500  |         | 8,000                      |         |         | 60             |
| 65   | 10,500                     | 10,500  | 10,700  | 8,000                      |         |         | 65             |
| 70   | 10,500                     | 10,500  | 10,700  | 8,000                      | 8,100   |         | 70             |
| 75   | 10,500                     | 10,500  | 10,700  | 8,000                      | 8,100   |         | 75             |
| 80   | 10,500                     | 10,500  | 10,700  | 8,000                      | 8,100   |         | 80             |
| 85   | 10,500                     | 10,500  | 10,700  | 8,000                      | 7,200   | 7,200   | 85             |
| 90   | 9,900                      | 10,500  | 10,700  | 7,900                      | 7,200   | 7,200   | 90             |
| 95   | 8,600                      | 9,400   | 10,200  | 7,800                      | 7,100   | 7,100   | 95             |
| 100  | 7,300                      | 8,100   | 8,900   | 7,700                      | 7,000   | 6,600   | 100            |
| 105  | 6,300                      | 7,000   | 7,700   | 7,100                      | 7,000   | 6,600   | 105            |
| 110  | 5,300                      | 6,000   | 6,600   | 6,100                      | 6,900   | 6,500   | 110            |
| 115  | 4,400                      | 5,100   | 5,700   | 5,200                      | 6,300   | 6,500   | 115            |
| 120  | 3,600                      | 4,200   | 4,800   | 4,400                      | 5,400   | 6,500   | 120            |
| 125  | 2,900                      | 3,500   | 4,000   | 3,700                      | 4,700   | 5,600   | 125            |
| 130  | 2,300                      | 2,800   | 3,300   | 3,000                      | 3,900   | 4,800   | 130            |
| 135  | 1,700                      | 2,200   | 2,600   | 2,400                      | 3,300   | 4,100   | 135            |
| 140  |                            | 1,600   | 2,000   | 1,800                      | 2,700   | 3,400   | 140            |
| 145  |                            |         | 1,400   | 1,300                      | 2,100   | 2,800   | 145            |
| 150  |                            |         |         |                            | 1,600   | 2,200   | 150            |
| 155  |                            |         |         |                            |         | 1,700   | 155            |
| 160  |                            |         |         |                            |         | 1,200   | 160            |

This information is not for crane operation. Operator must refer to the in-cab information for crane operation. Rated lifting capacities shown on fully extended outriggers do not exceed 85% of the tipping loads and on tires do not exceed 75% of the tipping loads.

| 60,000 lb Counterweight – Fully Extended Outriggers – 360° Rotation<br>(All Capacities Are Listed In Pounds) |                            |         |         |                            |         |         |                |
|--|----------------------------|---------|---------|----------------------------|---------|---------|----------------|
| 195.3 ft Main Boom Length  |                            |         |         |                            |         |         |                |
| Radius<br>(ft)   | 31 ft Hydraulic Offset Fly |         |         | 55 ft Hydraulic Offset Fly |         |         | Radius<br>(ft) |
|  | 2°–15°                     | 15°–30° | 30°–45° | 2°–15°                     | 15°–30° | 30°–45° |                |
| 50   | 10,500                     |         |         |                            |         |         | 50             |
| 55   | 10,500                     | 10,500  |         | 8,000                      |         |         | 55             |
| 60   | 10,500                     | 10,500  |         | 8,000                      |         |         | 60             |
| 65   | 10,500                     | 10,500  | 10,700  | 8,000                      |         |         | 65             |
| 70   | 10,500                     | 10,500  | 10,700  | 8,000                      | 8,100   |         | 70             |
| 75   | 10,500                     | 10,500  | 10,700  | 8,000                      | 8,100   |         | 75             |
| 80   | 10,500                     | 10,500  | 10,700  | 8,000                      | 8,100   |         | 80             |
| 85   | 10,500                     | 10,500  | 10,700  | 8,000                      | 7,200   | 7,200   | 85             |
| 90   | 10,500                     | 10,500  | 10,700  | 7,900                      | 7,200   | 7,200   | 90             |
| 95   | 10,500                     | 10,500  | 10,700  | 7,800                      | 7,100   | 7,100   | 95             |
| 100  | 9,900                      | 10,300  | 10,700  | 7,700                      | 7,000   | 6,600   | 100            |
| 105  | 9,100                      | 9,500   | 9,900   | 7,600                      | 7,000   | 6,600   | 105            |
| 110  | 8,400                      | 8,800   | 9,100   | 7,500                      | 6,900   | 6,500   | 110            |
| 115  | 7,700                      | 8,100   | 8,400   | 7,400                      | 6,800   | 6,500   | 115            |
| 120  | 7,100                      | 7,400   | 7,700   | 6,800                      | 6,800   | 6,500   | 120            |
| 125  | 6,400                      | 6,800   | 7,100   | 6,200                      | 6,700   | 6,500   | 125            |
| 130  | 5,900                      | 6,200   | 6,500   | 5,700                      | 6,100   | 6,400   | 130            |
| 135  | 5,300                      | 5,600   | 5,900   | 5,100                      | 5,600   | 6,100   | 135            |
| 140  | 4,800                      | 5,100   | 5,400   | 4,700                      | 5,100   | 5,600   | 140            |
| 145  | 4,300                      | 4,600   | 4,900   | 4,200                      | 4,600   | 5,000   | 145            |
| 150  | 3,900                      | 4,100   | 4,400   | 3,800                      | 4,200   | 4,600   | 150            |
| 155  | 3,500                      | 3,700   | 3,900   | 3,300                      | 3,700   | 4,100   | 155            |
| 160  | 3,100                      | 3,300   | 3,500   | 2,900                      | 3,300   | 3,700   | 160            |
| 165  | 2,700                      | 2,900   | 3,100   | 2,600                      | 2,900   | 3,300   | 165            |
| 170  | 2,300                      | 2,500   | 2,700   | 2,200                      | 2,500   | 2,900   | 170            |
| 175  | 2,000                      | 2,100   | 2,300   | 1,900                      | 2,200   | 2,500   | 175            |
| 180  | 1,600                      | 1,800   | 1,900   | 1,500                      | 1,800   | 2,100   | 180            |
| 185  | 1,300                      | 1,500   | 1,600   | 1,200                      | 1,500   | 1,700   | 185            |
| 190  |                            |         | 1,200   |                            | 1,200   | 1,400   | 190            |

This information is not for crane operation. Operator must refer to the in-cab information for crane operation. Rated lifting capacities shown on fully extended outriggers do not exceed 85% of the tipping loads and on tires do not exceed 75% of the tipping loads.

**60,000 lb Counterweight – Fully Extended Outriggers – 360° Rotation**  
**(All Capacities Are Listed In Pounds)**

**195.3 ft Main Boom Length**

| Radius<br>(ft) | 73 ft Hydraulic Offset Fly |         |         | 91 ft Hydraulic Offset Fly |         |         | 109 ft Hydraulic Offset Fly |         |         | Radius<br>(ft) |
|----------------|----------------------------|---------|---------|----------------------------|---------|---------|-----------------------------|---------|---------|----------------|
|                | 2°–15°                     | 15°–30° | 30°–45° | 2°–15°                     | 15°–30° | 30°–45° | 2°–15°                      | 15°–30° | 30°–45° |                |
| 65             | 6,500                      |         |         |                            |         |         |                             |         |         | 65             |
| 70             | 6,500                      |         |         | 5,000                      |         |         |                             |         |         | 70             |
| 75             | 6,500                      | 6,600   |         | 5,000                      |         |         |                             |         |         | 75             |
| 80             | 6,500                      | 6,600   |         | 5,000                      | 5,000   |         |                             |         |         | 80             |
| 85             | 6,500                      | 6,600   |         | 5,000                      | 5,000   |         | 3,000                       |         |         | 85             |
| 90             | 6,500                      | 6,600   |         | 5,000                      | 5,000   |         | 3,000                       |         |         | 90             |
| 95             | 6,500                      | 6,600   | 6,700   | 5,000                      | 5,000   |         | 3,000                       |         |         | 95             |
| 100            | 6,500                      | 6,600   | 6,700   | 5,000                      | 4,800   | 4,800   | 3,000                       | 3,000   |         | 100            |
| 105            | 6,500                      | 6,500   | 5,600   | 5,000                      | 4,600   | 4,600   | 3,000                       | 3,000   | 3,000   | 105            |
| 110            | 6,500                      | 6,300   | 5,500   | 5,000                      | 4,400   | 3,900   | 3,000                       | 2,800   | 2,800   | 110            |
| 115            | 5,800                      | 6,100   | 5,300   | 4,900                      | 4,200   | 3,700   | 3,000                       | 2,600   | 2,600   | 115            |
| 120            | 5,200                      | 5,600   | 5,200   | 4,300                      | 4,000   | 3,600   | 2,900                       | 2,400   | 2,000   | 120            |
| 125            | 4,600                      | 5,000   | 5,000   | 3,800                      | 3,800   | 3,400   | 2,700                       | 2,300   | 2,000   | 125            |
| 130            | 4,000                      | 4,500   | 4,900   | 3,300                      | 3,700   | 3,300   | 2,500                       | 2,100   | 1,800   | 130            |
| 135            | 3,500                      | 3,900   | 4,400   | 2,800                      | 3,200   | 3,100   | 2,000                       | 1,900   | 1,700   | 135            |
| 140            | 3,000                      | 3,400   | 3,900   | 2,300                      | 2,800   | 3,000   | 1,500                       | 1,800   | 1,500   | 140            |
| 145            | 2,500                      | 2,900   | 3,400   | 1,900                      | 2,300   | 2,800   |                             | 1,600   | 1,400   | 145            |
| 150            | 2,100                      | 2,500   | 3,000   | 1,500                      | 1,900   | 2,400   |                             | 1,200   | 1,300   | 150            |
| 155            | 1,700                      | 2,100   | 2,500   |                            | 1,400   | 1,900   |                             |         |         | 155            |
| 160            | 1,300                      | 1,700   | 2,100   |                            |         | 1,500   |                             |         |         | 160            |
| 165            |                            | 1,300   | 1,700   |                            |         |         |                             |         |         | 165            |
| 170            |                            |         | 1,300   |                            |         |         |                             |         |         | 170            |

This information is not for crane operation. Operator must refer to the in-cab information for crane operation. Rated lifting capacities shown on fully extended outriggers do not exceed 85% of the tipping loads and on tires do not exceed 75% of the tipping loads.

**This Page Intentionally Blank**

**This Page Intentionally Blank**

**Link-Belt Construction Equipment Company** Lexington, Kentucky [www.linkbelt.com](http://www.linkbelt.com)

®Link-Belt is a registered trademark. Copyright 2015. We are constantly improving our products and therefore reserve the right to change designs and specifications.