

The logo for Superior Industries, featuring the word "SUPERIOR" in white, bold, sans-serif capital letters inside a black oval with a red border.

# VIBRATORY EQUIPMENT

Guardian™ Horizontal Screen / Anthem™ Inclined Screen / Intrepid™ Feeder

- Patent pending bottle jack lifting points **create safer setting** for spring replacement. ■
- Never misplace **hinged access doors**, which seal access holes from material spillage. ■
- Spray bar knockouts **eliminate cutting into valuable side plate** when converting to wet plant. ■
- Industry-leading** two-year equipment warranty and one-year parts warranty. ■

# INTREPID™ VIBRATING GRIZZLY FEEDER FEATURES



## CORNER SUPPORT\*

- Bottle jack lifting point for 1.5" lift
- Safer and simpler spring replacement

\* Patent Pending



## FULL-LENGTH LINER

- Standard liner for horizontal
- Sloped liner for 5° incline



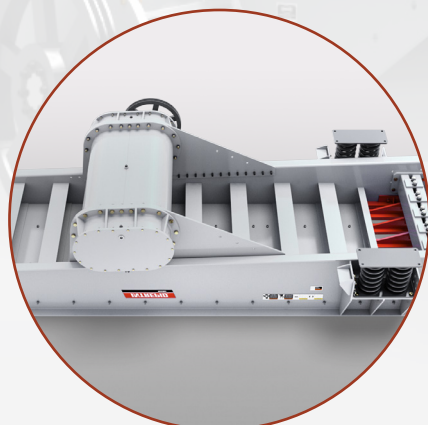
## MULTIPLE SPRING ARRANGEMENTS

- Inboard for heavy loads, rock boxes and stationary applications
- Lighter duty and portable plant applications



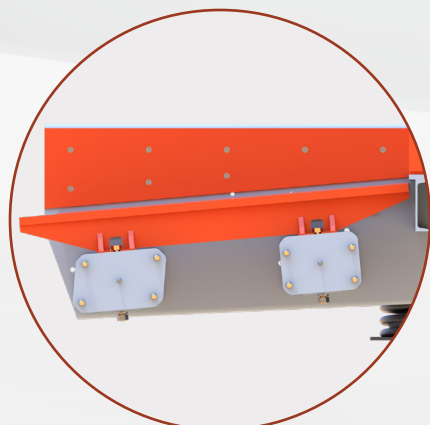
## BOLT IN GRIZZLY CARTRIDGES

- One set of bars for flat or 5° slope
- In-house, quality grizzly fabrication



## ROBUST PAN SECTION

- I-Beam supports on 16" centers
- Improves impact resistance and durability



## CUSTOM OPTIONS

- Retrofittable replacement designs
- Custom widths, grizzly, punch plate and finger deck

# INTREPID™ VIBRATING GRIZZLY FEEDER SPECIFICATIONS

VIBRATING GRIZZLY FEEDERS							
Model	Size	Drive Size	HP	Speed	Grizzly	Pan Thickness	Pan Liner
3617VGF	36"x17'	90 MM	20	650-800	5ft single	3/4"	1/2"
4220VGF	42"x20'	110 MM	25	650-800	5ft sgl	3/4"	1/2"
4820VGF	48"x20'	110 MM	30	650-800	5ft sgl	3/4"	1/2"
4824VGF	48"x24'	130 MM	40	650-800	5ft sgl & dbl	3/4"	1/2"
5420VGF	54"x20'	130 MM	50	650-800	5ft sgl	3/4"	1/2"
5424VGF	54"x24'	130 MM	50	650-800	5ft sgl & dbl	3/4"	1/2"
6024VGF	60"x24'	130 MM	50	650-800	5ft sgl & dbl	3/4"	3/4"

ESTIMATED CAPACITY (TPH) - INCHES (MM)		
Pan Width	Horizontal	5° Decline
36 (914)	340	475
42 (1,067)	520	730
48 (1,219)	720	1000
54 (1,372)	880	1200
60 (1,524)	1020	1400

\*Based on 100lbs/per cu. ft. free flowing material



# SERVICE & SUPPORT



- 24/7/365 live support at +1 (320) 589-7485
- 2-Year equipment warranty
- 1-year aftermarket parts warranty
- Onsite repair technicians from dealer or factory
- Preventative maintenance activities
- Detailed equipment inspection
- Optimization report from application specialist

# AFTERMARKET PARTS



- 24/7/365 parts ordering at +1 (320) 589-7547
- Fully stocked warehouses for quick deliveries
- Critical spare parts stocked by distributors
- Custom, retrofit parts for competitive equipment

# WARRANTY



- We offer the industry's only 2-year product and 1-year parts' warranties, confirming our commitment to you.