



PINNACLE[®] CONVEYOR

80' / 100' / 125'

- Pinnacle Conveyor stockpiles at 22° incline (standard is 18°), with a set-back axle, which **prevents stockpile from burying axle**.
- Patented FD Axle allows quickest, **safest transition from road to stockpile mode**.
- Fully enclosed power travel gearing offers **protection from dust** and fugitive material.
- Patented power fold **protects hydraulic cylinder rods** from damaging debris during operation.

HIGHLIGHTS



1/ **RADIAL RECEIVING HOPPER:** Gathering trough includes adjustable rubber flashing.

2/ **CONVEYOR FRAME:** Rigid designs up to 42" deep truss.

3/ **V-PLOW:** Clean return side of belts and protect tail pulley from damaging material.

4/ **FOLD SUPPORT:** Protects the conveyor and belt integrity during folding and unfolding.

5/ **POWERFOLD:** Patented design protects hydraulic cylinder rods from damaging debris during operation.

6/ **ENCLOSED POWER TRAVEL:** Protects gearing from dust and debris common in conveying applications.

7/ **FD AXLE:** Patented technology allows operators to transition from road travel to stockpile mode in just seconds.

8/ **CHEVRON® PULLEY:** Patented v-shaped wing pulley prevents fugitive material from trapping between wings; extends belt life.

9/ **TOWING EYE:** Rugged adjustable eye pintle hitch/hook provides a more secure coupling. (Not shown)

A/ 22° INCLINE

- Increased incline creates higher stockpile suitable for smaller footprints.
- Set back axle design avoids burying tires in material.

B/ PATENTED FD AXLE ASSEMBLY

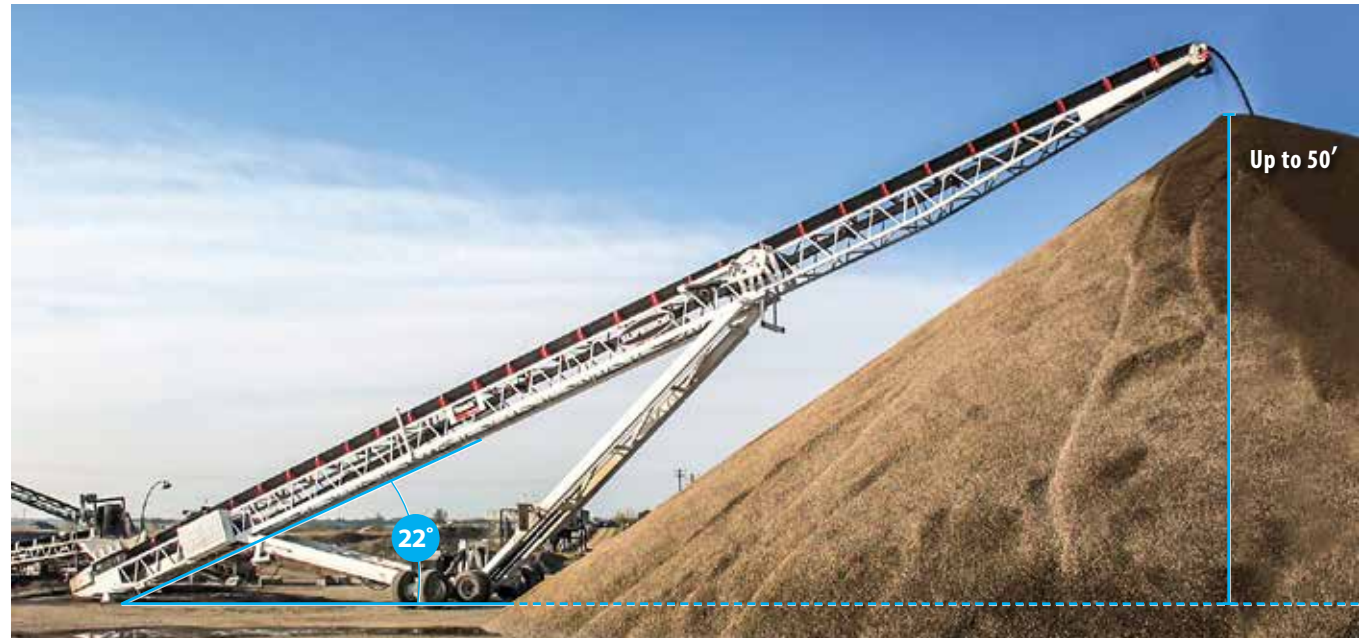
- Transfer from road travel to radial travel mode **in seconds.**
- Enclosed planetary wheel drive protects gearing from dust and debris.
- Independently raise and lower FD tires to level conveyor on uneven ground.
- Off-the-road (OTR) tires conquer low ground pressure applications.

XTP AXLE ASSEMBLY

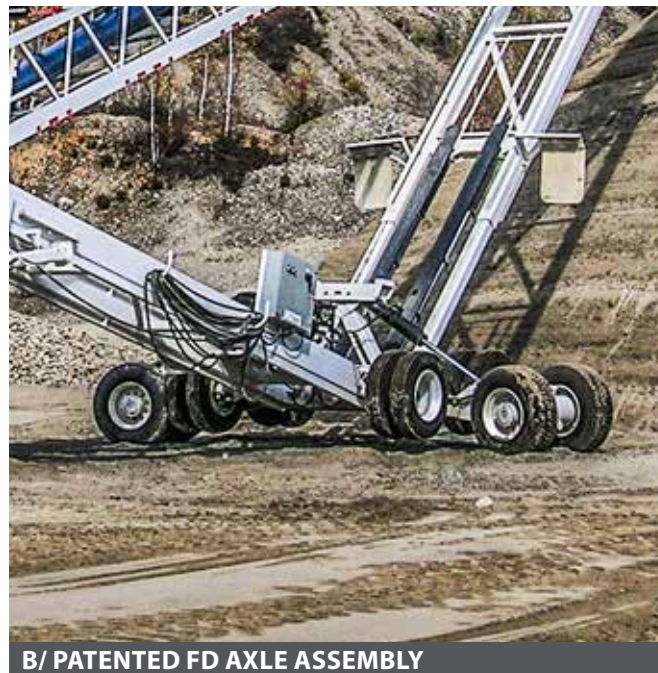
- Go from radial travel to transport mode **in less than 3 minutes.**
- Eliminates time consuming set-up time by using a direct drive instead of traditional chain drive.

C/ PATENTED POWER FOLDS

- Cylinder rod not exposed to elements during operation.
- Lever actuated folding and unfolding of conveyor.
- Very quick transition from transport to stockpile positions.



A/ 22° INCLINE



B/ PATENTED FD AXLE ASSEMBLY



C/ PATENTED POWER FOLDS

OPTIONS



MOXIE® ROLLS



EXTERRA® SFL DUAL BELT CLEANER



HYDRAULIC LANDING JACKS



ONBOARD POWER



MODULAR 3-SIDED HOPPER W/ FOLD UP WINGS



SEALING SYSTEM

- **BELT COVERS:** Limit dust generation; protect material.
- **BELT SCALE:** Evaluate inventory more accurately.
- **EXTERRA® SFL DUAL BELT CLEANER:** Primary and secondary blades on one pole.
- **GALVANIZED:** Resist corrosion; prevent rusting.
- **MOXIE® ROLLS:** Non-steel rolls shed sticky material.
- **IMPACT BED:** Protect belt in transfer zones.
- **IMPACT ROLLS:** Protect belt in load zones.

- **3-PLY CONVEYOR BELTING:** Larger size ores; rugged service.
- **ANCHOR PIVOT PLATE:** Maintains tail position during radial travel.
- **ALL WHEEL DRIVE:** Dependability in low pressure soils.
- **XTP AXLE:** Same tires for road and radial travel.
- **AUTO GREASERS:** Program to automatically discharge grease.
- **ONBOARD POWER:** Self-contained diesel engine.

- **RECEIVING HOPPER:** Wider target for material transfer.
- **SEALING SYSTEM:** Prevent spillage between hopper skirting and belt.
- **SONICSCOUT™ MATERIAL SENSOR:** Detect material on belting.
- **URATHON® RETURN ROLL:** Shed wet, sticky material.

SPECIFICATIONS

GENERAL SPECS

Tons Per Hour (TPH): Up to 1,200

Belt Widths (inches): Up to 42

Belt Speed (FPM): 350

Incline Angle: 22°

OPERATING DIMENSIONS

	80'	100'	125'
Conveyor Length (m)	80'-0" (24.4)	100'-0" (30.5)	125'-0" (38.1)
Conveyor Ground Length (m)	72'-3" (22.0)	91'-0" (27.7)	116'-4" (35.4)
Raised Height to Center of Pulley (m)	32'-5" (9.9)	39'-4" (12.0)	50'-8" (15.4)
Lowered Height to Center of Pulley (m)	18'-1" (5.5)	20'-1" (6.1)	18'-2" (5.4)
Anchor Pivot to Center of Axle (m)	32'-2" (9.8)	39'-8" (12.1)	46'-5" (14.2)

STOCKPILE DIMENSIONS

Raised Stockpile Height (m)	33'-0" (10.1)	40'-0" (12.2)	50'-0" (15.2)
Lowered Stockpile Height (m)	18'-1" (5.5)	20'-1" (6.1)	18'-2" (5.5)
Radius of Pile (m)	42'-2" (12.9)	51'-7" (15.8)	66'-5" (20.3)
Anchor Pivot to Center of Pile (m)	74'-6" (22.7)	93'-0" (28.4)	114'-7" (35.0)

TRAVEL DIMENSIONS

Travel Length - Kingpin to Rear (m)	53'-7" (16.4)	68'-8" (21.0)	84'-2" (25.7)
Travel Height (m)	13'-5" (4.0)	13'-2" (4.0)	13'-11" (4.2)
Travel Width (m)	11'-2" (3.4)	11'-5" (3.4)	11'-6" (3.5)
Kingpin to End of Tow Eye (m)	5'-1" (1.5)	5'-0" (1.5)	5'-6" (1.7)
Kingpin to Axle (m)	34'-7" (10.6)	39'-7" (12.1)	49'-4" (15.1)
Axle to Head Pulley (m)	19'-0" (5.8)	29'-1" (8.9)	34'-10" (10.6)
FD Axle Size	FD15	FD20	FD40
Weight at Axle - 36" Belt Width (kg)	20,000 (9,072)	27,250 (12,360)	39,500 (17,917)
Weight at Kingpin - 36" Belt Width (kg)	6,500 (2,948)	6,300 (2,858)	9,500 (4,309)

MAXIMUM STOCKPILE CAPACITIES (MANUAL PILES) ASSUMPTIONS BASED ON MATERIAL WHICH HAS A 37° ANGLE OF REPOSE AND 100 PCF (1.6 t/m³) MATERIAL DENSITY.

Conveyor Length	Stockpile Height ft x in (m)	Stockpile Volume in Cubic Yards (m ³)				Stockpile Volume in Tons (MT)			
		Conical	90°	180°	270°	Conical	90°	180°	270°
80'	33'-0" (10.1)	2,500 (1,900)	8,600 (6,600)	14,900 (11,400)	21,100 (16,100)	3,300 (3,000)	11,700 (10,600)	20,100 (18,200)	28,500 (25,900)
100'	40'-0" (12.2)	4,500 (3,500)	16,300 (12,500)	28,000 (21,400)	39,700 (30,400)	6,100 (5,500)	21,900 (20,000)	37,700 (34,200)	53,600 (48,600)
125'	50'-0" (15.2)	8,500 (6,500)	31,000 (23,700)	52,900 (40,500)	75,000 (57,400)	11,400 (10,300)	41,400 (37,600)	71,400 (64,800)	101,400 (92,000)

SIDE BY SIDE COMPARISON

	POWERSTACKER CONVEYOR	PINNACLE CONVEYOR
Tons Per Hour (TPH)	Up to 1,500	Up to 1,200
Belt Widths (inches)	30, 36, 42, 48	30, 36, 42
Standard Lengths (feet)	95, 110, 125, 150	80, 100, 125
Belt Speed (FPM)	400	350
Incline	18°	22°

CONVEYOR SPLICE OPTIONS

Bolt Splice	—	●
Manual Fold	—	○
Power Fold	●	○

UNDERCARRIAGE OPTIONS

Manual Raise Undercarriage	—	●
Hydraulic Raise Undercarriage	●	○

AXLE OPTIONS

FD Axle	●	○
XTP Axle	—	○
Power Radial Travel	●	○

LANDING LEGS OPTIONS

Slide Tube	●	○
Crank Down	●	○

ADDITIONAL OPTIONS

5 ft. Radial Receiving Hopper	●	○
Rock Box	○	○
5th Wheel Hitch	●	○
Brakes/Lights/Mudflaps	●	○
Tow Eye	●	○
Anchor Pivot Plate/Base	●	○

● STANDARD ○ AVAILABLE — N/A

CUBIC YARDS - PINNACLE VS. POWERSTACKER STOCKPILE COMPARISON

Conveyor Length	Stockpile Volume in Cubic Yards (m ³)			
	Conical	90°	180°	270°
80' PC	2,500 (1,900)	8,600 (6,600)	14,900 (11,400)	21,100 (16,100)
100' PC	4,500 (3,500)	16,300 (12,500)	28,000 (21,400)	39,700 (30,400)
125' PC	8,500 (6,500)	31,000 (23,700)	52,900 (40,500)	75,000 (57,400)
95' PS	2,300 (1,800)	9,600 (7,300)	16,900 (12,900)	24,200 (18,500)
110' PS	3,500 (2,700)	14,500 (11,100)	25,600 (19,600)	36,600 (28,000)
125' PS	4,900 (3,700)	20,800 (16,000)	36,700 (28,100)	52,600 (40,200)
150' PS	8,200 (6,300)	35,000 (26,800)	61,900 (47,300)	88,700 (67,800)

TONS - PINNACLE VS. POWERSTACKER STOCKPILE COMPARISON

Conveyor Length	Stockpile Volume in Tons (MT)			
	Conical	90°	180°	270°
80' PC	3,300 (3,000)	11,700 (10,600)	20,100 (18,200)	28,500 (25,900)
100' PC	6,100 (5,500)	21,900 (20,000)	37,700 (34,200)	53,600 (48,600)
125' PC	11,400 (10,300)	41,400 (37,600)	71,400 (64,800)	101,400 (92,000)
95' PS	3,100 (2,800)	13,000 (11,800)	22,800 (20,700)	32,700 (29,700)
110' PS	4,700 (4,300)	19,600 (17,800)	34,500 (31,300)	49,400 (44,800)
125' PS	6,700 (6,100)	28,100 (25,500)	49,600 (45,000)	71,000 (64,400)
150' PS	11,100 (10,100)	47,300 (42,900)	83,500 (75,700)	119,700 (108,600)

Assumptions based on aggregate which has a 37° angle of repose and 100 PCF (1.6 t/m³) material density.