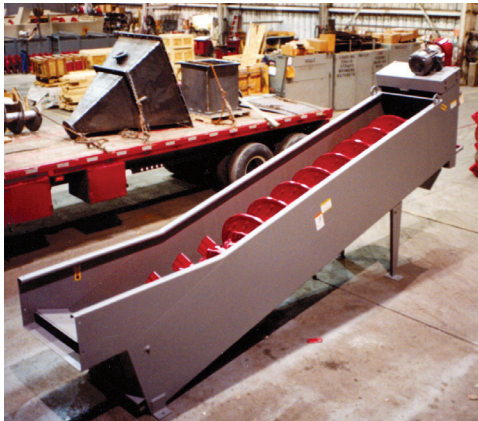


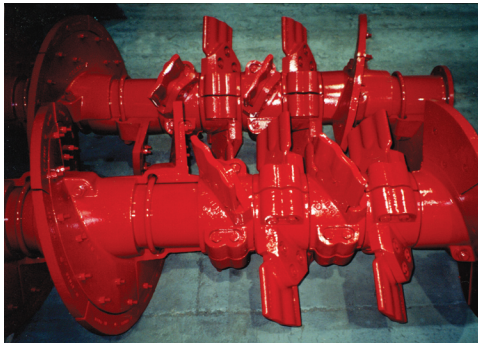
Eagle Coarse Material Washers

Single Screw Units | Double Screw Units



Eagle Coarse Material Washers provide light to moderate scrubbing and washing to remove the soluble clays and dust coatings found in natural and crushed stone applications. Corrugated paddles cut through the slurrified material, which results in particle on particle scrubbing that causes the coatings to separate from the coarse aggregate. The action of the paddles combined with the rolling and tumbling generated by the rotating spirals releases deleterious materials into the overflowing wastewater. A rising current manifold on each Eagle Coarse Material Washer provides an upward current of water to assist in removing unwanted materials. Light-weight deleterious materials such as twigs, sticks and coals are floated by the rising current of water and the jiggling action of the paddles within the tub. They are then removed by the overflowing wastewater.

By adding more paddles to the conveying shaft(s), each washer can be configured to meet the different specific scrubbing needs of various materials. Additional paddles allow material to be retained in the tub area for additional scrubbing.



FEATURES

Eagle Gear Reducer

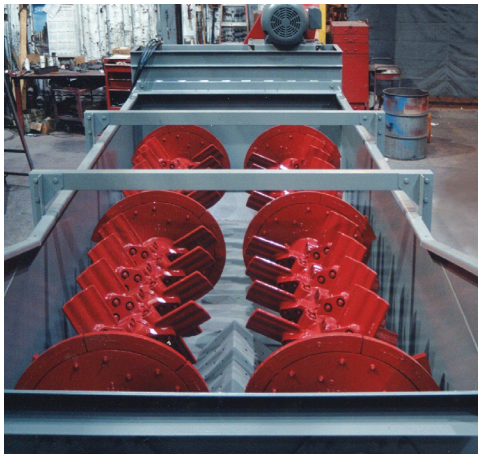
- Heavy-duty design with heat-treated helical gears
- 100% of the shaft's thrust load carried by the output shaft(s)
- Oil bath lubrication for maintenance-free operation
- Drive guards standard equipment

Conveyor Shaft

- Extra-thick, one piece shaft tubing
- Four set of paddles come standard
- Paddle and flight sections easily changeable in the field
- Number of paddles on shaft can be increased to improve scrubbing

Conveyor Shaft Flights

- Wear shoes cover the full face of spiral
- Flight segments are mounted to shaft via cast hubs.
- Heavy-duty cast hubs also provide shaft wear protection



continued ►

EIW, LLC
129 East Holcomb Avenue
Des Moines, Iowa 50313 USA
+1 (515) 243 1123 | Fax +1 (515) 243 8214
sales@eiwllc.com | www.eiwllc.com



Conveyor Shaft Paddles

- Feature corrugated face for additional scrubbing capabilities
- Three bolt fastening system and protective “wrap around” design
- Paddle segments mounted to shaft via cast hubs
- Heavy-duty cast hubs also protect shaft from wear

Washer Tub

- Fabricated with thick gauge steel
- Close clearance curved plate runs entire length of shaft
- Adjustable end weir for improving trash removal capabilities
- Rising current manifold
- Spherical-roller rear grease bearing(s)
- High-efficiency electric motor(s)

Optional Equipment

- Discharge chute
- Washer supports
- Safety covers
- Pillow-block rear bearing(s)

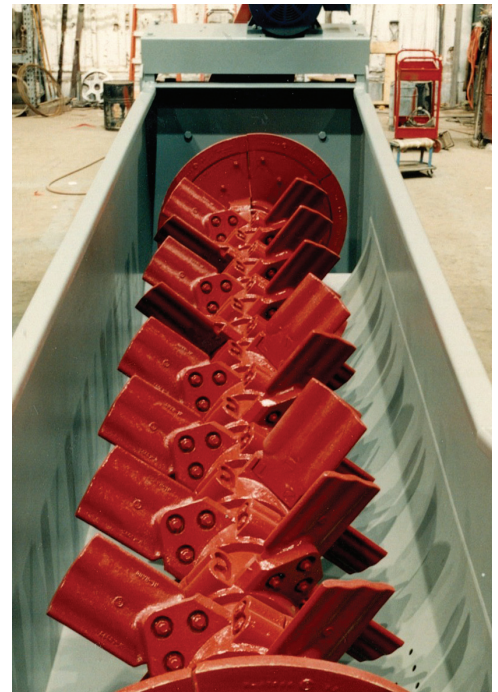


SINGLE SCREW COARSE MATERIAL WASHERS CAPACITIES

Size (Dia. x Length)	Maximum Capacity	Maximum Material Size	Water Required	Electric Motor HP	Shaft RPM	Machine Weight (lb.)	Machine Operating Weight (lb.)
22" x 18'	45 to 55	2"	250 to 350	10	40	6,050	10,650
24" x 18'	60 to 75	2"	300 to 400	15	40	7,100	15,350
30" x 18'	100 to 125	2 1/2"	350 to 450	20	35	9,450	22,250
36" x 18'	150 to 175	2 1/2"	400 to 600	30	32	12,150	30,350
44" x 20'	200 to 250	3"	500 to 750	40	26	20,600	36,500

DOUBLE SCREW COARSE MATERIAL WASHERS CAPACITIES

Size (Dia. x Length)	Maximum Capacity	Maximum Material Size	Water Required	Electric Motor HP	Shaft RPM	Machine Weight (lb.)	Machine Operating Weight (lb.)
30" x 18'	200 to 250	2 1/2"	600 to 800	40	35	17,150	35,350
36" x 18'	300 to 350	2 1/2"	700 to 900	50	32	22,000	49,800
44" x 20'	400 to 500	3"	900 to 1,100	75	26	34,400	69,000
48" x 24'	450 to 600	3"	900 to 1100	100	26	48,600	97,200



EIW, LLC
 129 East Holcomb Avenue
 Des Moines, Iowa 50313 USA
 +1 (515) 243 1123 | Fax +1 (515) 243 8214
 sales@eiwllc.com | www.eiwllc.com



A McLanahan
 Company