



LIBERTY™ JAW CRUSHER

1836 / 2036 / 2054 / 2442 / 3244 / 3048 / 3254 / 3648

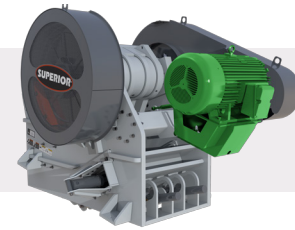
- Rugged, fabricated crusher frame and pitman assembly for a long life in the harshest applications.
- Reversible, 18% manganese quarry jaw dies with integrated lifting points to improve safety.
- Hydraulic tension rod and wedge adjustments eliminate manual labor, plus improve safety and uptime.
- Industry-leading two-year warranty backed by an experienced and motivated customer service team.

LIBERTY JAW KEY ADVANTAGES



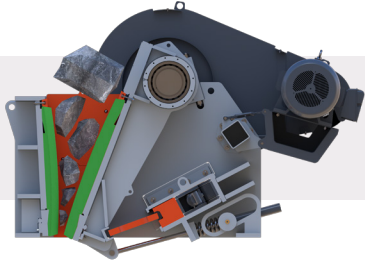
HEAVY DUTY WELDED FRAME

- Fully-fabricated base frame for strength and longevity.
- Stress relieved components ensure accuracy and improve durability.



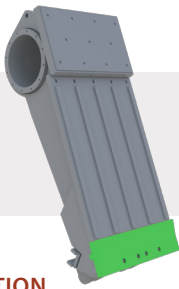
FRAME MOUNTED MOTOR

- Reduces crusher footprint and frees up valuable deck space.
- Allows for much smaller drive belt and easier access for maintenance.



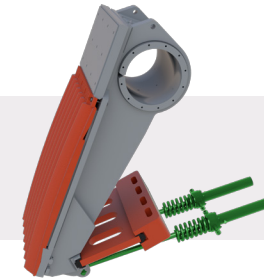
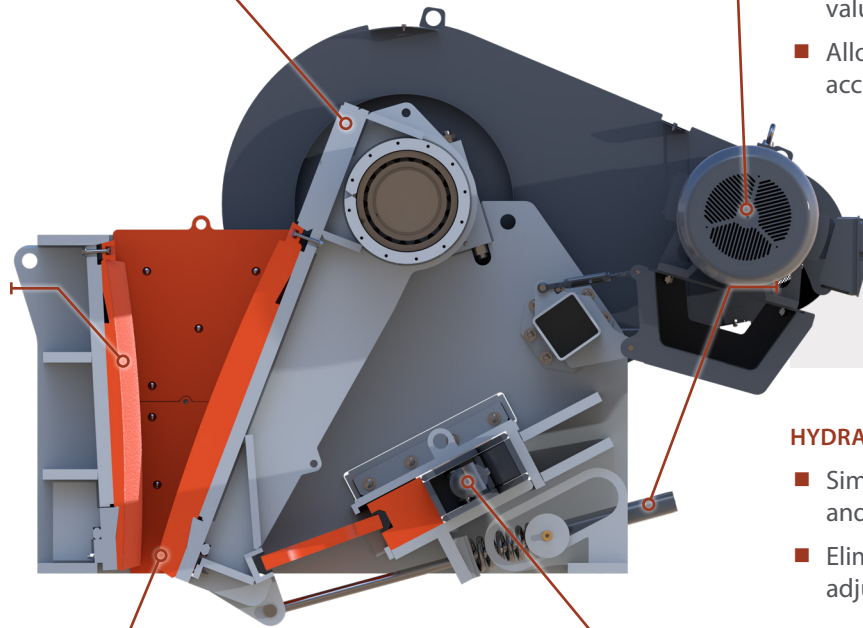
NIP ANGLE

- Geometry of crusher chamber creates aggressive nip angle throughout entire life of dies.
- Allows jaw to consistently grab and process material for high-level efficiency.



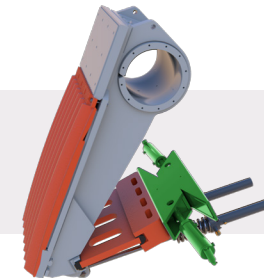
PITMAN TOE PROTECTION

- Insurance policy if neglected wearing occurs in pitman fabrication.
- Replaceable component eliminates the need for any downtime causing remachining.



HYDRAULIC TENSION SYSTEM

- Simply engage the hydraulic button for quick and safe toggle tension adjustments.
- Eliminates labor intensive manual adjustments.



HYDRAULIC WEDGE ADJUST

- Single push button hydraulically allows operators access to adjust closed side settings.
- Eliminate need for labor intensive shim adjustment.

SPECS, FEATURES, AND WARRANTY

LIBERTY JAW GENERAL SPECIFICATIONS								
	Liberty 1836	Liberty 2036	Liberty 2054	Liberty 2442	Liberty 3244	Liberty 3048	Liberty 3254	Liberty 3648
Recommended Horsepower	75	75	100	100	150	150	250	200
Height (with Flywheels)	70"	76"	86"	86"	101.5"	63"	107"	121"
Width (with Flywheels)	75"	81"	99"	88"	89"	99"	105"	99"
Length	65"	72"	76"	81"	96"	108"	108"	114"
Nominal Feed Opening (Tip to Tip)	18" X 36"	20" X 36"	20" X 54"	24" X 42"	32" X 44"	30" X 48"	32" X 54"	36" X 48"
Length of Fixed Jaw	36"	41"	47.25"	47.25"	60"	61"	61"	72.5"
Crusher Weight (without Motors)	19,500 lbs.	22,000 lbs.	42,000 lbs	38,000 lbs.	56,000 lbs	58,000 lbs.	80,000 lbs.	85,000 lbs.
Setting Range	1.5" - 6"	2" - 7"	1.5" - 6"	3" - 10"	3" - 12"	3" - 10"	4" - 16"	3.5" - 16"
Capacity Range (STPH)	50 - 190	75 - 260	90 - 310	136 - 460	160 - 610	155 - 510	265 -1000	250 - 900
Operating Rpm @ 1200 rpm	275	235	235	235	230	230	225	210

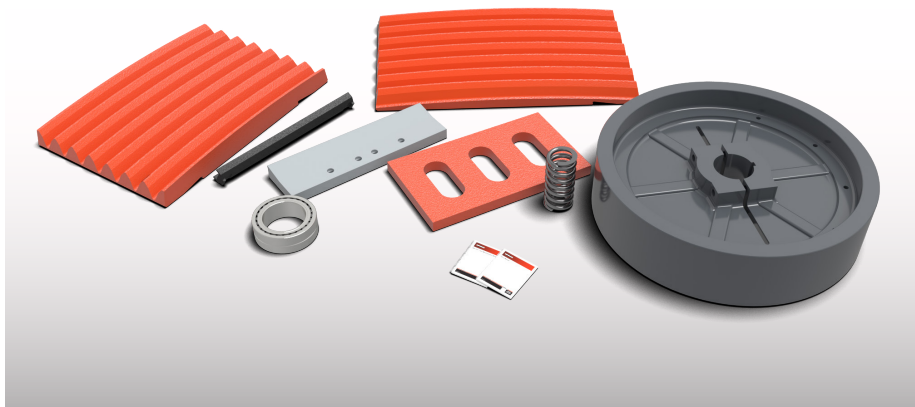
[illegible]

WORLD-CLASS SERVICE AND SUPPORT



- Strive for a 2 hour response time from service agents.
- US-based support staff limits wait time for North American customers.
- Commitment to getting crusher operating as expected.
- Investment in smart, hard-working and industry experienced service team.
- Direct line to technical support group, 24-hours a day at **+1 (320) 589-7485**.

QUICK DELIVERED PARTS



- Large inventory increases parts availability and reduces wait time.
- Centrally-located warehouse for quick deliveries in North America.
- Critical third party parts are inspected for integrity.
- High quality factory parts are backed by fitup assurance.
- 1-Year Parts Warranty:
 - ↳ Covers new parts against defects in material or workmanship.
 - ↳ Excludes normal wear and tear.

WARRANTY



- We offer the industry's only 2-year product and 1-year parts' warranties, confirming our commitment to you.