



Link-Belt
C R A N E S

RTG 80160
SERIES II

Rough Terrain Crane 160-ton | 145 mt

RTG 80130
SERIES II

Rough Terrain Crane 130-ton | 120 mt

The industry's most innovative solution to big rough terrain cranes, maneuverability, and transportability!



- **Revolutionary hydrostatic drive on a six-wheeled carrier for the ultimate in job site mobility**
- **Maneuverability redefined with over 45 tons (40.8 mt) of on-tire capacity**
- **Unprecedented transportability**

RTG 80130 SERIES **RTG 80160** SERIES
 Rough Terrain Crane 130-ton | 120 mt Rough Terrain Crane 160-ton | 145 mt



Cab mounted
amber strobe light

Right side
viewing camera

Folding viewing
mirror for travel

Tilting cab 20°

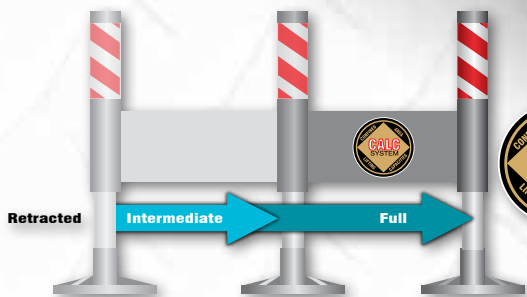
Complete lighting
package

Flat deck design
and non-slip surface
strips on deck

Link-Belt

Repositionable ladders
on front and back

Pullout
Cabwalk™



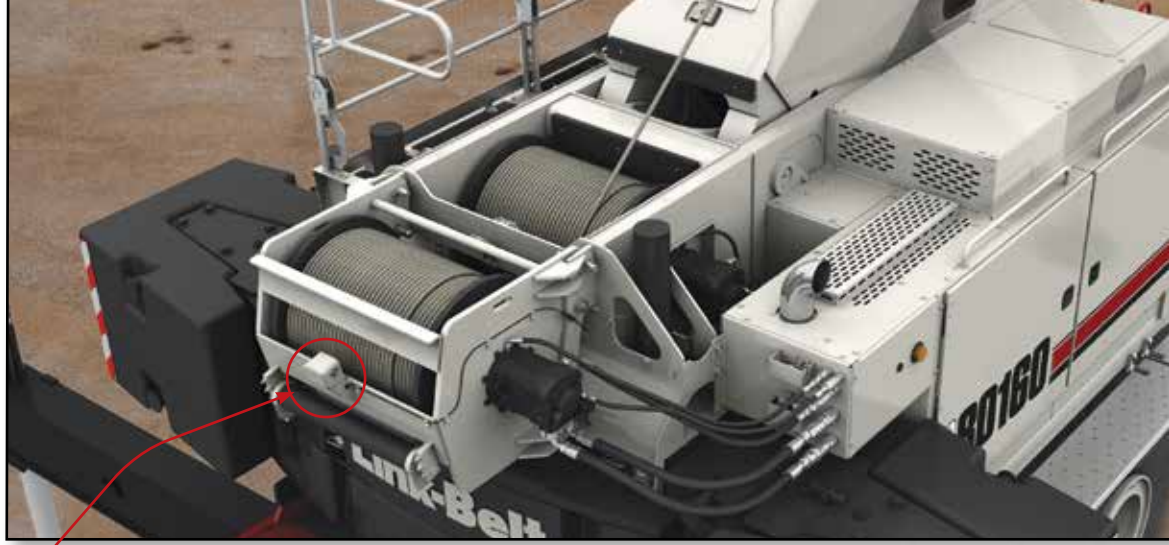
The Confined Area Lifting Capacities (CALC)
system provides three outrigger positions:

- full retraction
- intermediate extension
- full extension

Outrigger pins eliminate guesswork by automatically positioning outriggers at midpoint position.

Powerful hydraulics

- Removable auxiliary (rear) winch has hydraulic quick disconnects
- For greater productivity and control, multiple pump hydraulic circuit allows simultaneous function
- Piston winch motor provides smooth and precise hoisting
- Main and available auxiliary winch are equally matched in size and performance
- Provisions for the future installation of the auxiliary winch are standard



Work platform & folding guard rails

Removable auxiliary winch with hydraulic disconnects

Winch viewing cameras

Partial counterweight and zero counterweight charts



Folding catwalks on both sides of upper

6x2 and 6x6 drive with 23.5R25 tires

Total crane operating system

Link-Belt PULSE

Link-Belt Pulse is the Link-Belt designed total crane operating system. It includes the rated capacity limiter, boom extend mode controller (EMC), self-diagnostic capabilities and continuous monitoring of multiple crane functions and conditions. To aid operators in a safe and efficient operation, its high-resolution, color-intense graphic display provides excellent contrast even in direct sunlight.



Telematics. You own the data!

Cellular-based data logging and monitoring system that provides:

- Viewing options for sharing data with distributor and Link-Belt
- Location and operational settings
- Monitor routine maintenance intervals
- Crane and engine monitoring
- Diagnostic and fault codes





Innovative 10 ft (3.0m) fly is integral to one of the on-board fly options.

Over 25 tons (22.6 mt) capacity and one-load two-line lift procedures.

Manual offsets: 2°, 15°, 30°, 45°

Hydraulic offsets: 2°–45°

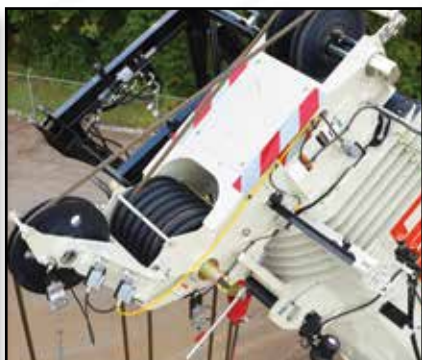
No charted capacity deductions for telescoping loads

18 ft (5.48 m) lattice fly is interchangeable between models.

The only greaseless, high-capacity formed booms designed and built in North America!



Lighting packages and flood lights available



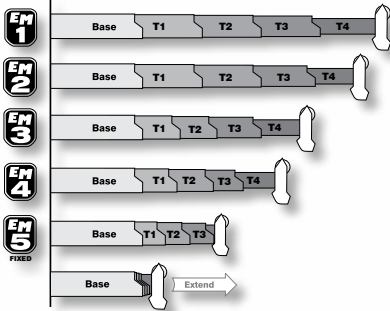
Quick reeve boom head eliminates the need to remove the bucket when it becomes necessary to change the reeving

Superior capacities and extension ranges

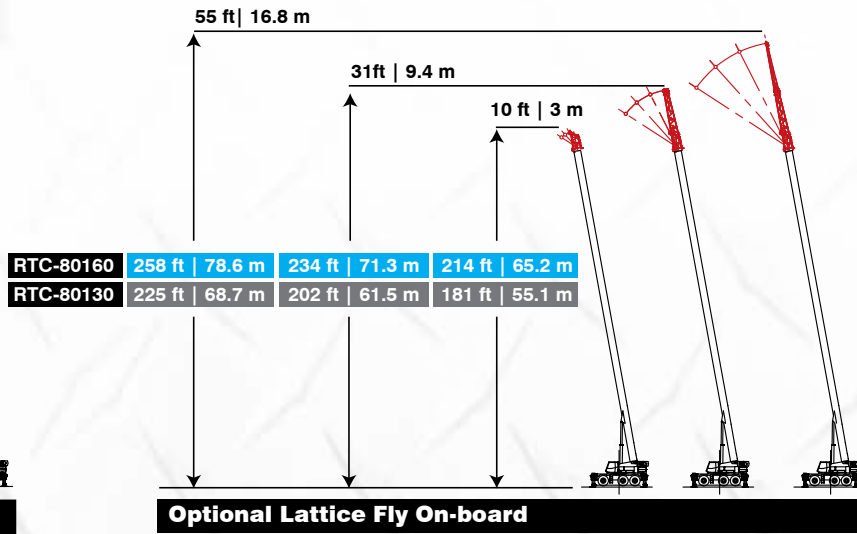
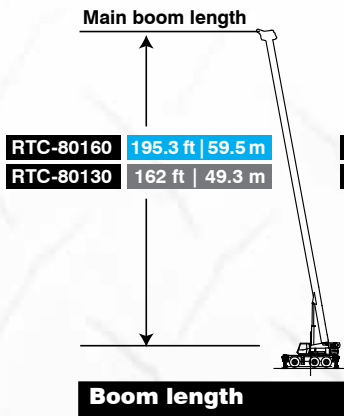
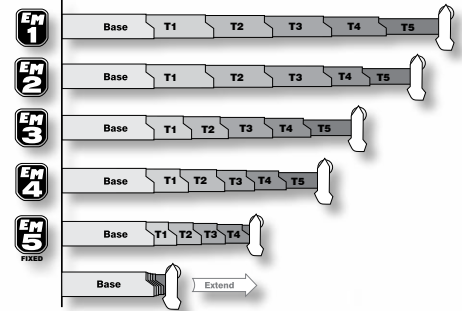


Greaseless boom pads

RTC 80130 Series Five section Latching boom

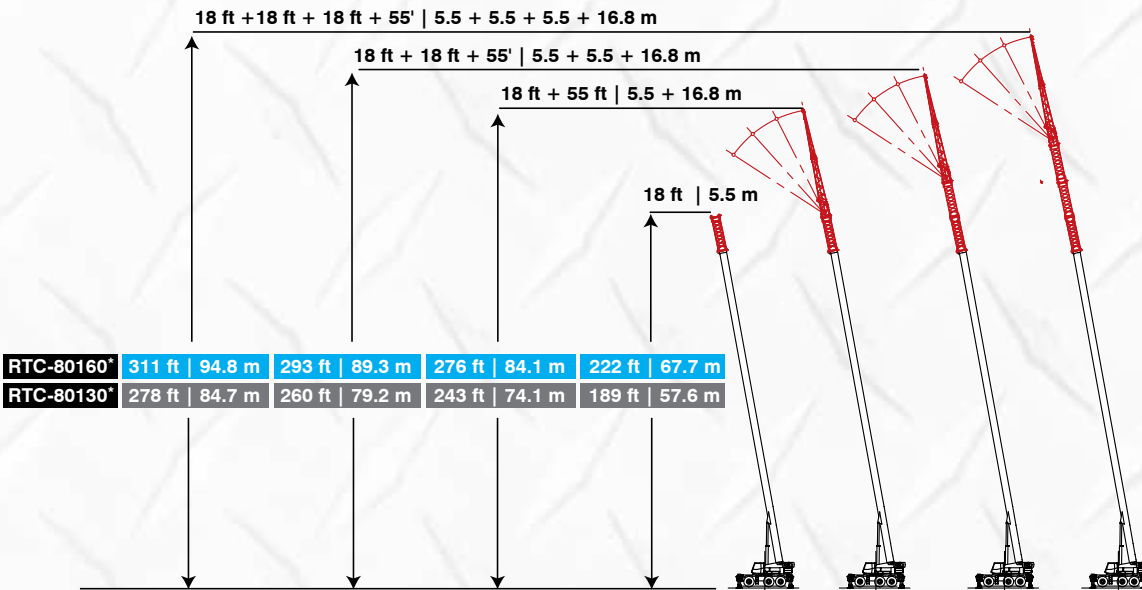


RTC 80160 Series Six section Latching boom



Optional Lattice Fly On-board

Option 1: 31 ft – 55 ft | 9.4 – 16.8 m two piece, bi-fold, on-board lattice attachment with 2°, 15°, 30°, and 45° manual offsets or hydraulic offsets. Option 2: 10-31-55 ft (3.0-9.4-16.8m) three piece, bi-fold, on-board lattice attachment with manual or hydraulic offsets



Optional Lattice Fly Extension

*The optional 55 ft (16.8m) two or three-piece offsettable bi-fold fly can be extended by adding up to three optional 18 ft (5.5 m) lattice inserts

Operator's cab provides ergonomic comfort and control

- **Extra large windows** throughout for excellent visibility
- **Excellent ventilation** via a large sliding door, side and rear windows, and hinged roof window
- **Single or dual axis, electronic operated controller** mounted on armrest for outstanding operator comfort
- **Tilting and Telescoping** steering column
- All gauges, switches, indicators, and controls are located in the **operator's forward line of sight**
- All gauges and switches are backlit for **excellent visibility in low light conditions**
- Link-Belt vision package including **winch, right side swing, and rear-view cameras**
- In cab comfort is maintained by the **standard heater and air conditioning**
- **Cab mounted amber strobe light**
- **Internal rated capacity limiter light bars**
- Available - **External rated capacity limiter light bars**
- Available - **LED working light on top of cab**



Swing-out doors provide exceptional access to engine components.



Designed for easy access and service

Access is superb with strategically-located ladders, steps, catwalks and CabWalk.

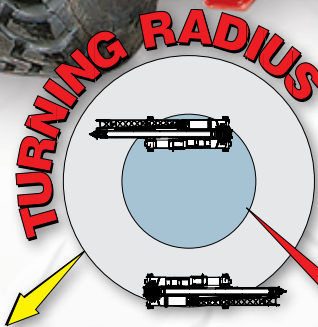




Revolutionary hydrostatic drive on a 6-wheel carrier

Not only are these cranes easy to get from jobsite to jobsite, they also have extraordinary creep control and jobsite maneuverability, thanks to their hydrostatic powered motors in each wheel. The smaller tires give them an overall height that is ideal for hauling, along with their individual six-wheel hydrostatic drive. There is no crane in the world, any size, that can come close to the job site maneuverability and performance of Link-Belt's large RTC Series II machines.

On the job, Link-Belt's large RTC Series II cranes have outstanding on-tire capacity coupled with a long reach, maneuverability, incredible gradeability and low height, making them truly an ideal solution for industrial sites.



2 wheel steer
< 42 ft (12.8 m)

6 wheel steer
< 22 ft (6.7 m)

Because of the innovative 6x6 hydrostatic drive/steer on each wheel, the turning radius of the 30' 2" (9.2 m) long carrier is a remarkable 21' 10" (6.66 m).

Independent front



Independent rear

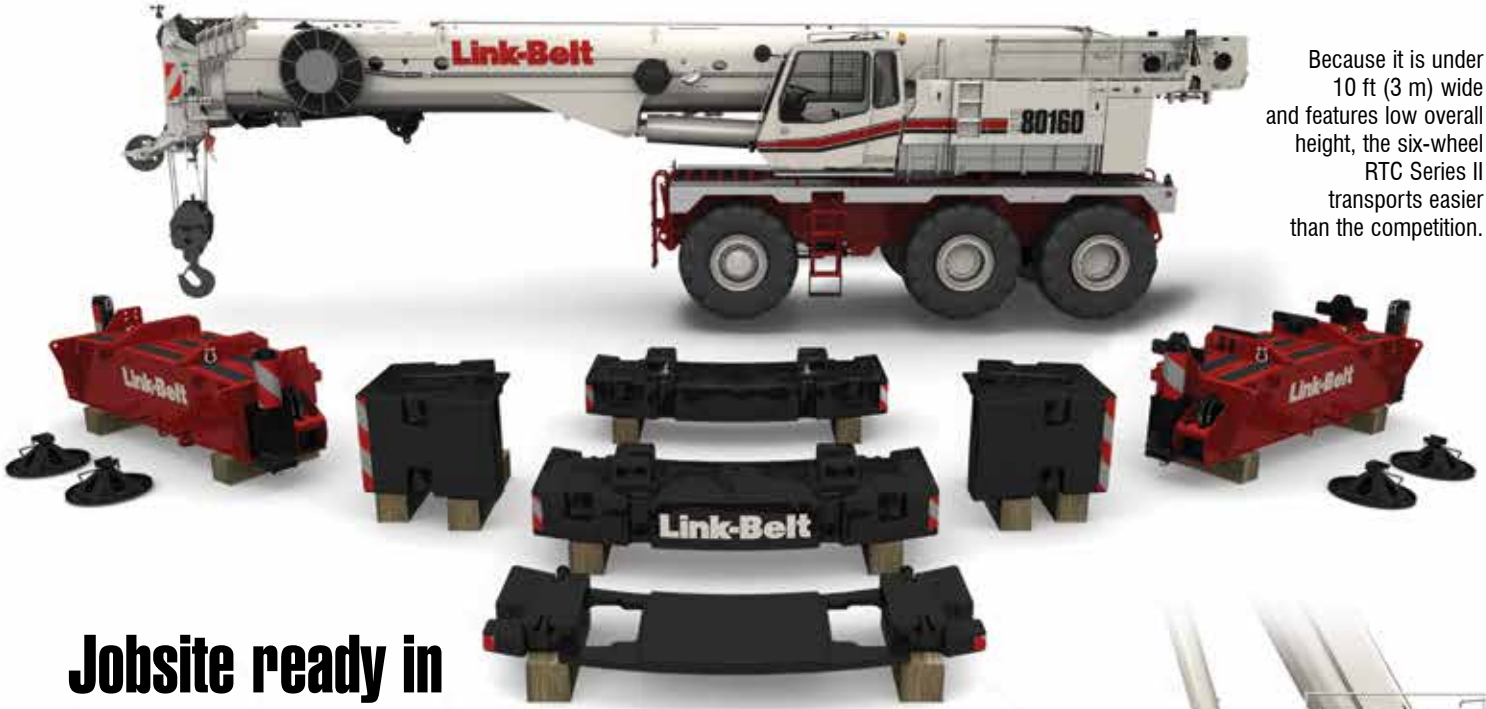


Coordinated six wheel drive



Six wheel "crab"





Because it is under 10 ft (3 m) wide and features low overall height, the six-wheel RTC Series II transports easier than the competition.

Jobsite ready in less than an hour

Main unit transports under 100,000 lbs (45 mt)

The RTC installs its own counterweight and outrigger boxes to be jobsite ready. Unlike other big RT's, boom and tires do not need to be removed. Therefore, the six-wheel RTC Series II is ready to be driven off the transport trailer and begin self-assembly.



In less than an hour and without a helper crane, the six-wheel Rough Terrain Crane Series II cranes are ready for work.



Link-Belt
CRANES
Lexington, Kentucky | www.linkbelt.com

© Link-Belt is a registered trademark
Copyright 2019 All rights reserved.
We reserve the right to change designs
and specifications at any time. Litho in U.S.A
1/19 3010 #4553 (supercedes LIT #4525)